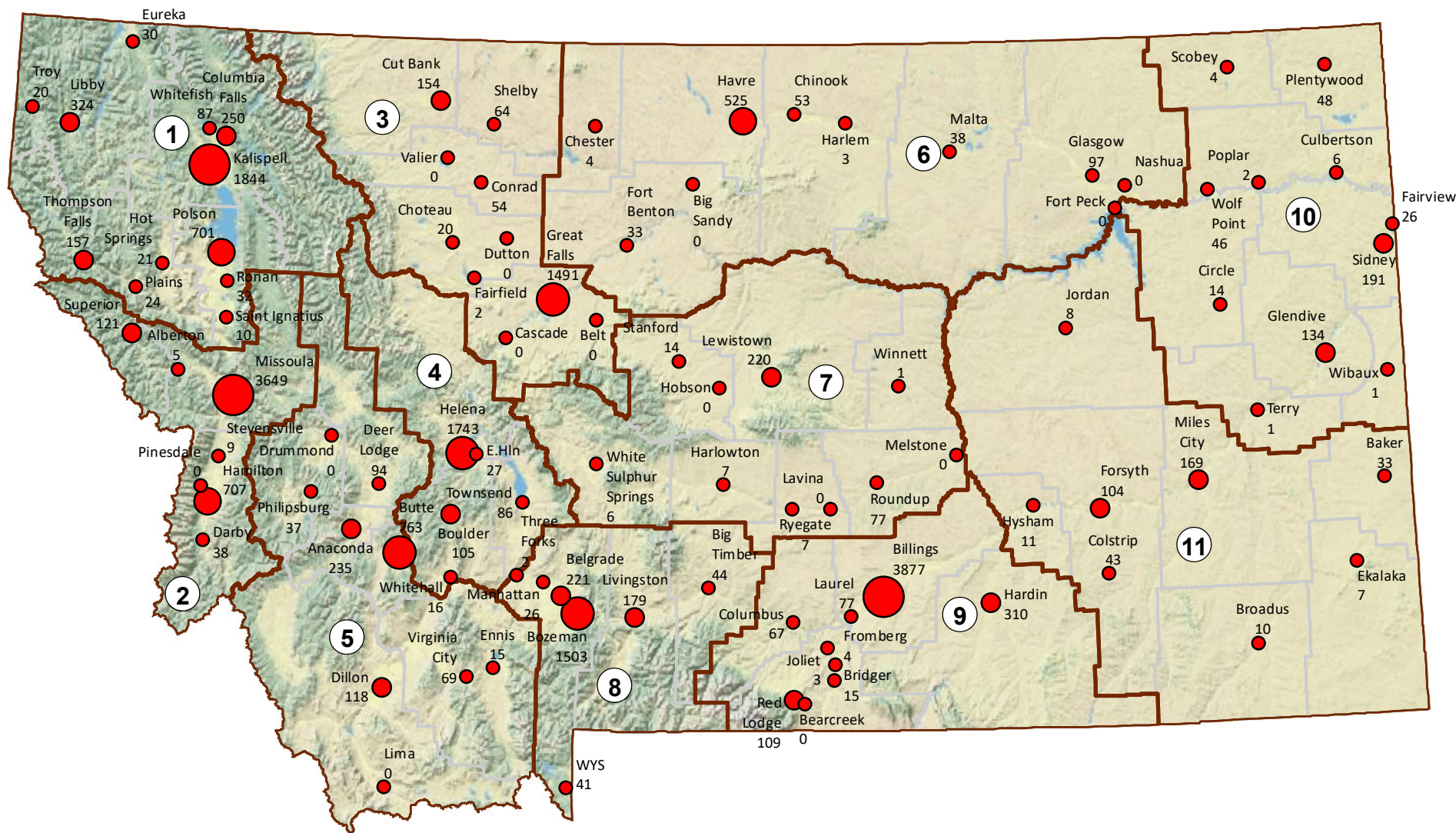


Office of the State Public Defender

FY 16 Agency Statistics





New Cases Opened in Courts of Limited Jurisdiction - Fiscal Year 2016

Total LC Cases Opened In FY16: 21,543



LC Cases Opened



REGION 1 KALISPELL

Attorneys: 18.5
 Support Staff: 8
 Investigators: 3
 Contract Attorneys: 48
 FYE 2016 Cases Opened: 5,645
 District Court Cases: 2,145
 Cases in Courts of Limited Jurisdiction: 3,500
 District Courts: 4
 Courts of Limited Jurisdiction: 16
 Sq. Miles: 13,365
 Region Population (2010 Census): 150,774
 Region Poverty Pop. (2010 Census): 25,219

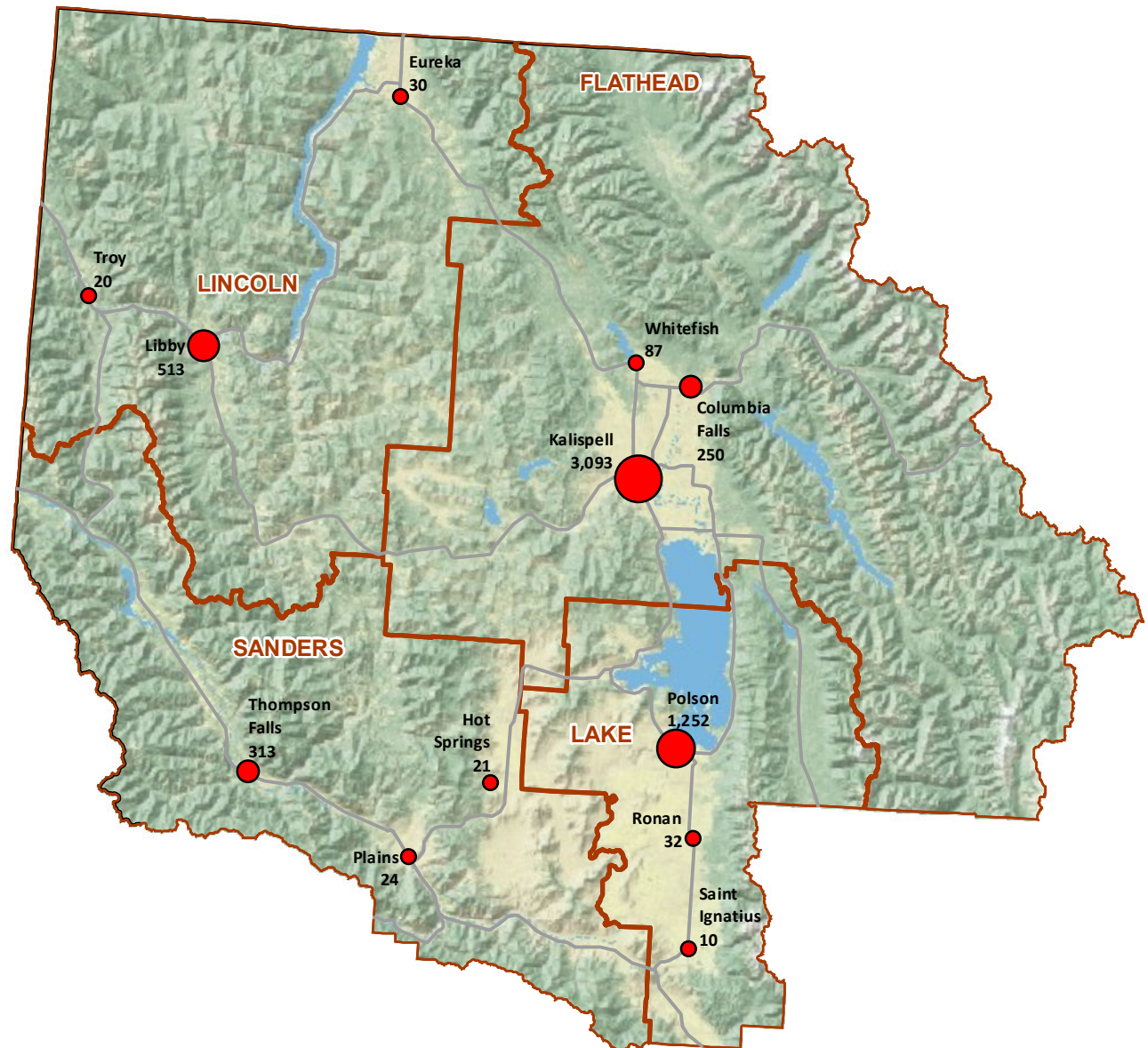
Region 1

Total Opened Cases

- 0 - 150
- 151 - 500
- 501 - 1,250
- 1,251 - 3,000
- 3,001 - 7,000



OPD Total New Cases Opened in Fiscal Year 2016



10 5 0 10 20 30 40 Miles

REGION 2 MISSOULA

Attorneys: 23.5
 Support Staff: 10
 Investigators: 3
 Contract Attorneys: 66
 FYE 2016 Cases Opened: 6,768
 District Court Cases: 2,239
 Cases in Courts of Limited Jurisdiction: 4,529
 District Courts: 3
 Courts of Limited Jurisdiction: 10
 Sq. Miles: 6,235
 Region Population (2010 Census): 153,734
 Region Poverty Pop. (2010 Census): 23,620

Region 2

Total Opened Cases

- 0 - 150
- 151 - 500
- 501 - 1,250
- 3,001 - 7,000



OPD Total New Cases Opened in Fiscal Year 2016



10 5 0 10 20 30 40 Miles

REGION 3 GREAT FALLS

Attorneys: 12
 Support Staff: 7
 Investigators: 2
 Contract Attorneys: 51
 FYE 2016 Cases Opened: 3,864
 District Court Cases: 2,079
 Cases in Courts of Limited Jurisdiction: 1,785
 District Courts: 5
 Courts of Limited Jurisdiction: 16
 Sq. Miles: 11,618
 Region Population (2010 Census): 112,276
 Region Poverty Pop. (2010 Census): 17,237

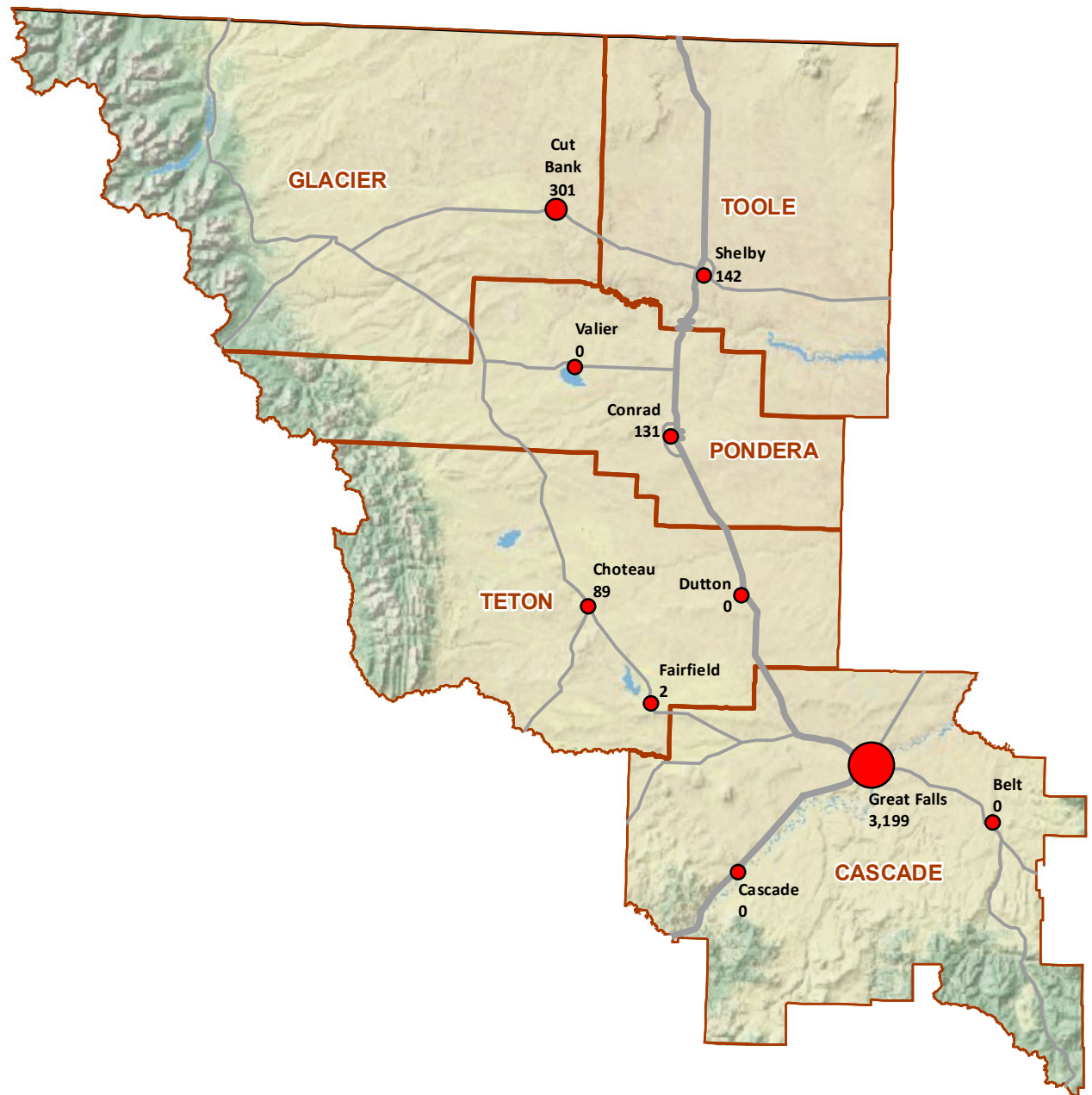
Region 3

Total Opened Cases

- 0 - 150
- 151 - 500
- 3,001 - 7,000



OPD Total New Cases Opened in Fiscal Year 2016



10 5 0 10 20 30 40 Miles

REGION 4 HELENA

Attorneys: 13
 Support Staff: 6
 Investigators: 1
 Contract Attorneys: 49
 FYE 2016 Cases Opened: 3,211
 District Court Cases: 1,234
 Cases in Courts of Limited Jurisdiction: 1,977
 District Courts: 3
 Courts of Limited Jurisdiction: 8
 Sq. Miles: 6,388
 Region Population (2010 Census): 80,413
 Region Poverty Pop. (2010 Census): 8,813

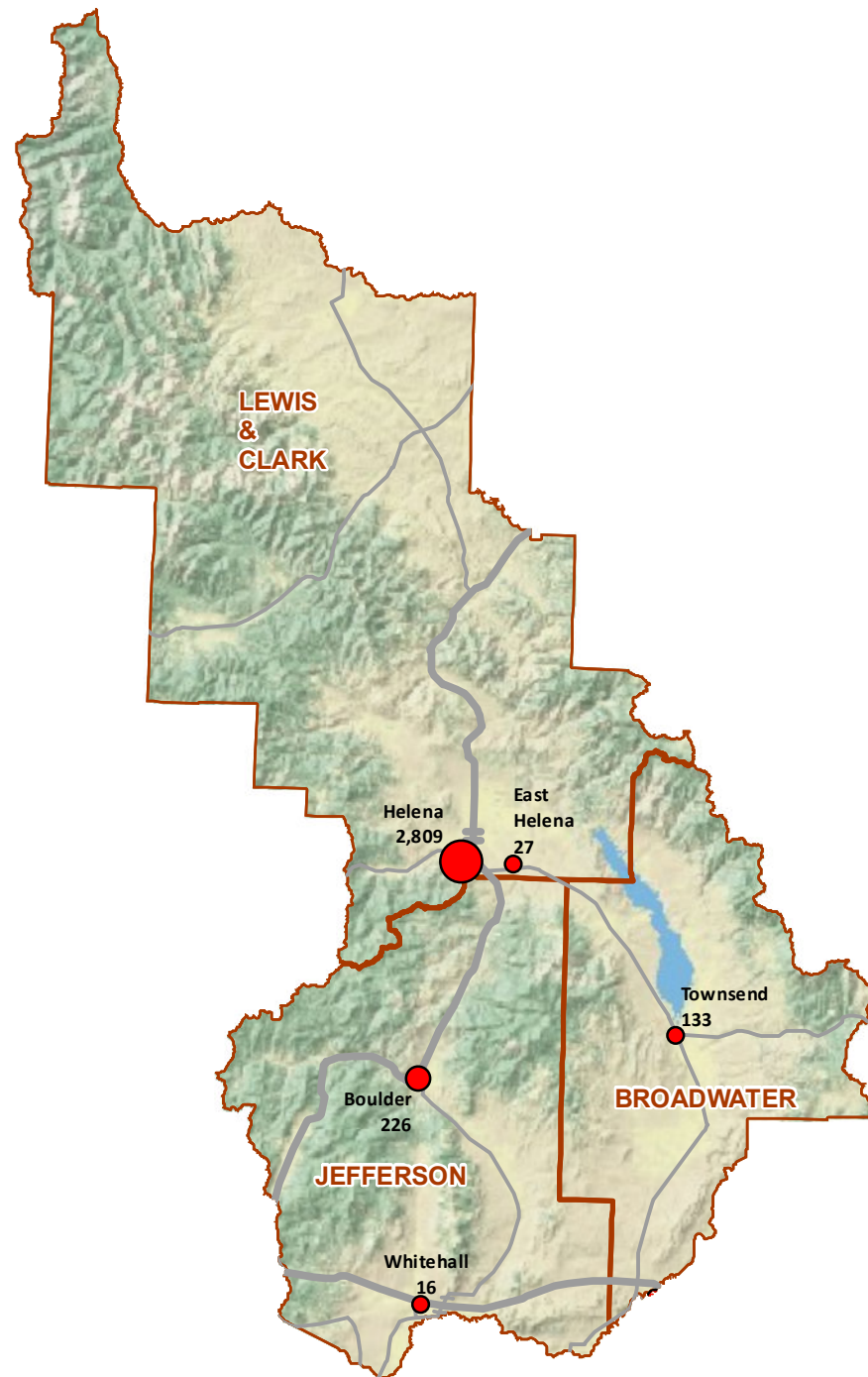
Region 4

Total Opened Cases

- 0 - 150
- 151 - 500
- 1,251 - 3,000



OPD Total New Cases Opened in Fiscal Year 2016



10 5 0 10 20 30 40 Miles

REGION 5 BUTTE

Attorneys: 9
 Support Staff: 4
 Investigators: 1
 Contract Attorneys: 56
 FYE 2016 Cases Opened: 2,189
 District Court Cases: 858
 Cases in Courts of Limited Jurisdiction: 1,331
 District Courts: 6
 Courts of Limited Jurisdiction: 14
 Sq. Miles: 14,693
 Region Population (2010 Census): 70,541
 Region Poverty Pop. (2010 Census): 11,524

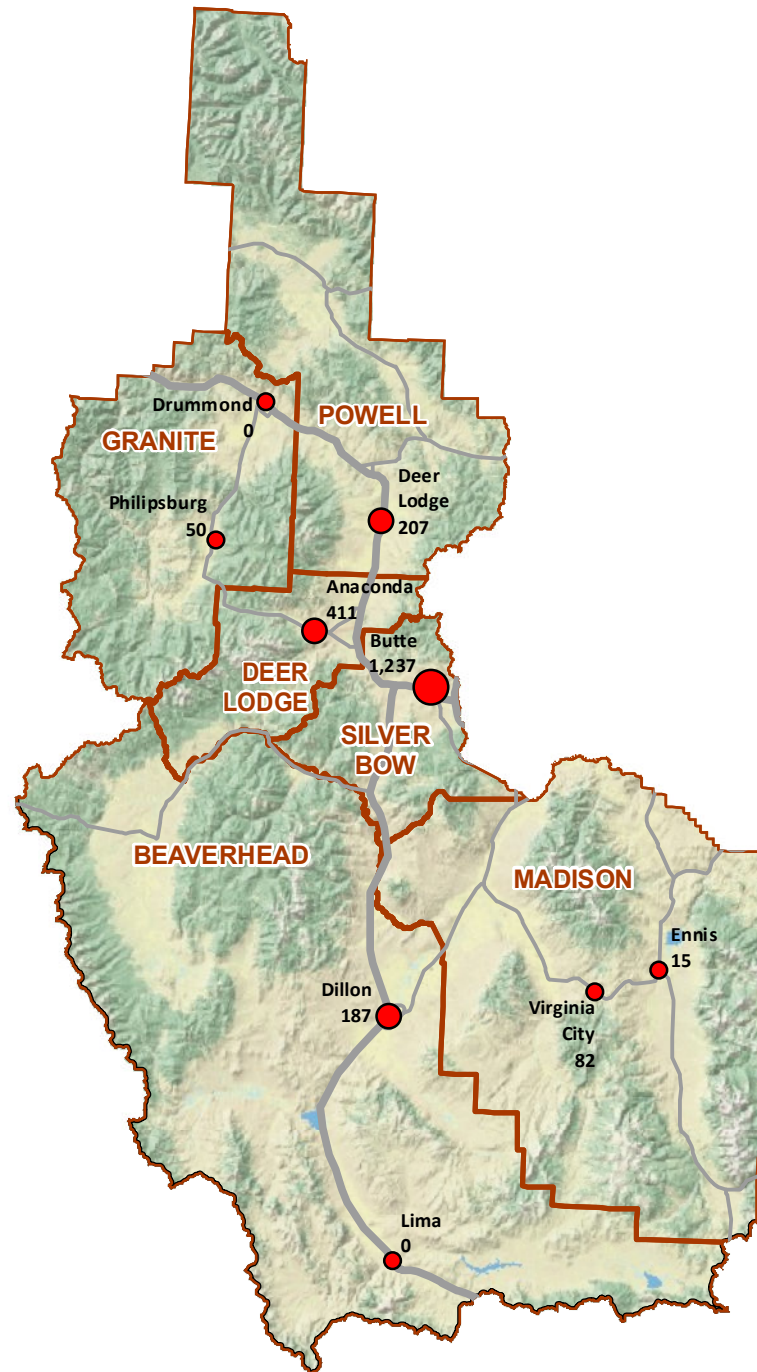
Region 5

Total Opened Cases

- 0 - 150
- 151 - 500
- 501 - 1,250



OPD Total New Cases Opened in Fiscal Year 2016



10 5 0 10 20 30 40 Miles

REGION 6 HAVRE

Attorneys: 4
 Support Staff: 2
 Investigators: 1
 Contract Attorneys: 34
 FYE 2016 Cases Opened: 1,543
 District Court Cases: 790
 Cases in Courts of Limited Jurisdiction: 753
 District Courts: 6
 Courts of Limited Jurisdiction: 16
 Sq. Miles: 22,858
 Region Population (2010 Census): 42,361
 Region Poverty Pop. (2010 Census): 7,809

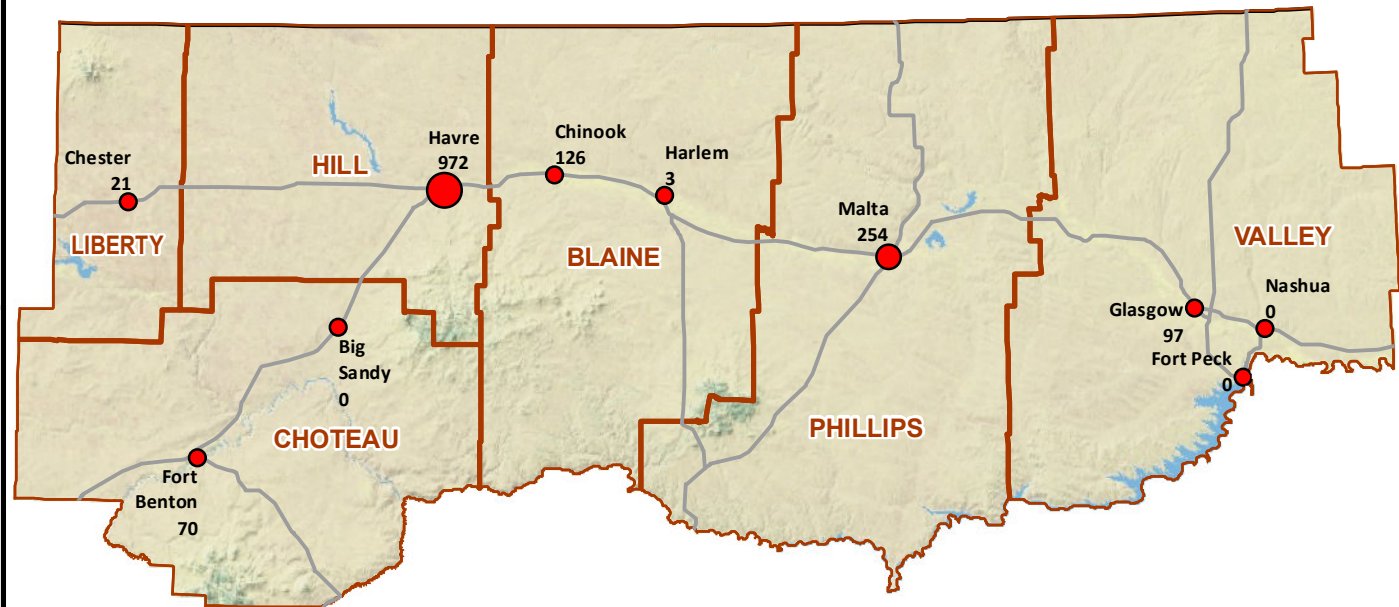
Region 6

Total Opened Cases

- 0 - 150
- 151 - 500
- 501 - 1,250



OPD Total New Cases Opened in Fiscal Year 2016



10 5 0 10 20 30 40
Miles

REGION 7 LEWISTOWN

Attorneys: 1
 Support Staff: 1
 Investigators: 1
 Contract Attorneys: 38
 FYE 2016 Cases Opened: 771
 District Court Cases: 439
 Cases in Courts of Limited Jurisdiction: 332
 District Courts: 7
 Courts of Limited Jurisdiction: 17
 Sq. Miles: 14,748
 Region Population (2010 Census): 23,633
 Region Poverty Pop. (2010 Census): 3,655

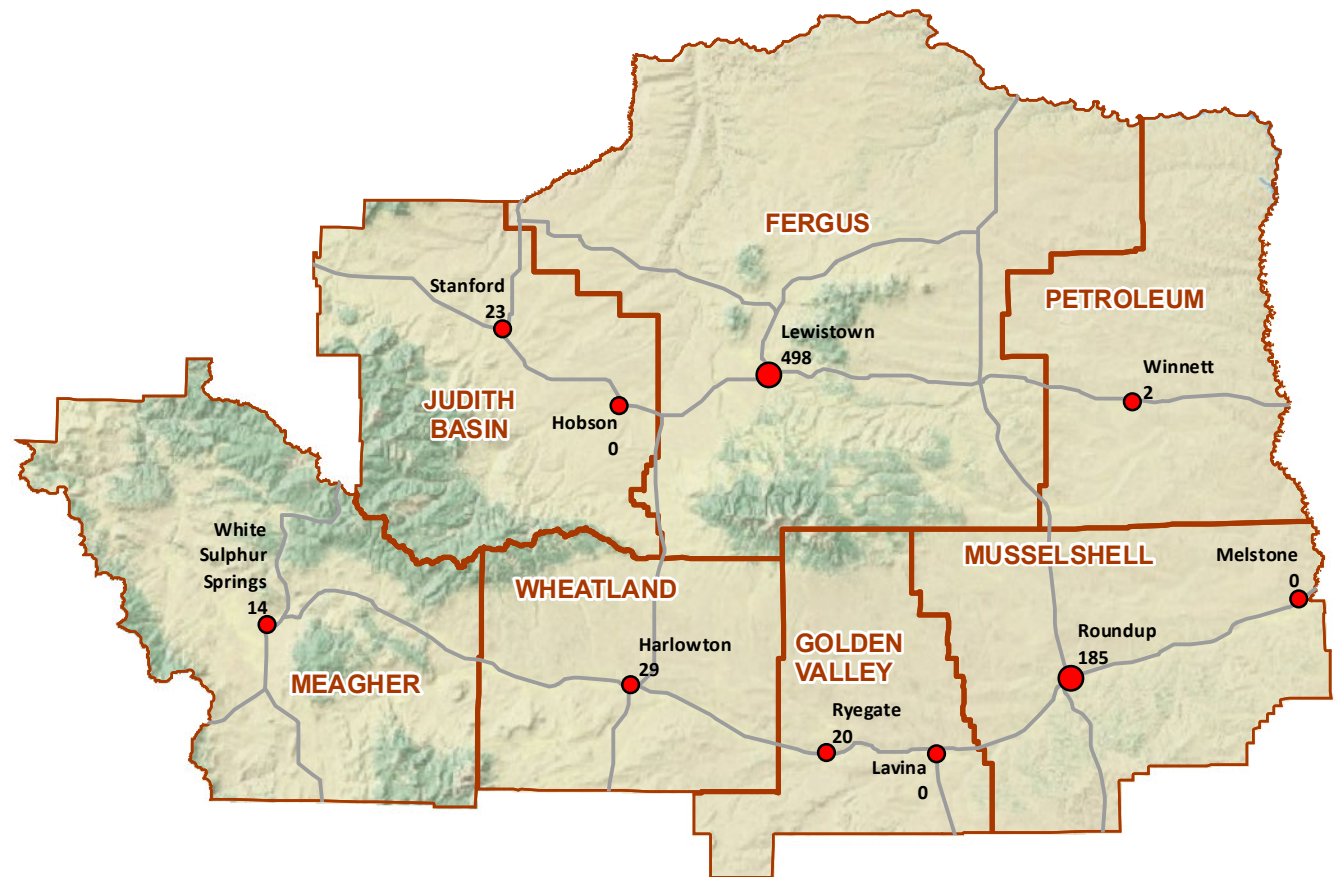
Region 7

Total Opened Cases

- 0 - 150
- 151 - 500



OPD Total New Cases Opened in Fiscal Year 2016



10 5 0 10 20 30 40 Miles

REGION 8 BOZEMAN

Attorneys: 10
 Support Staff: 6
 Investigators: 2
 Contract Attorneys: 31
 FYE 2016 Cases Opened: 2,826
 District Court Cases: 810
 Cases in Courts of Limited Jurisdiction: 2,016
 District Courts: 3
 Courts of Limited Jurisdiction: 10
 Sq. Miles: 7,303
 Region Population (2010 Census): 108,800
 Region Poverty Pop. (2010 Census): 13,632

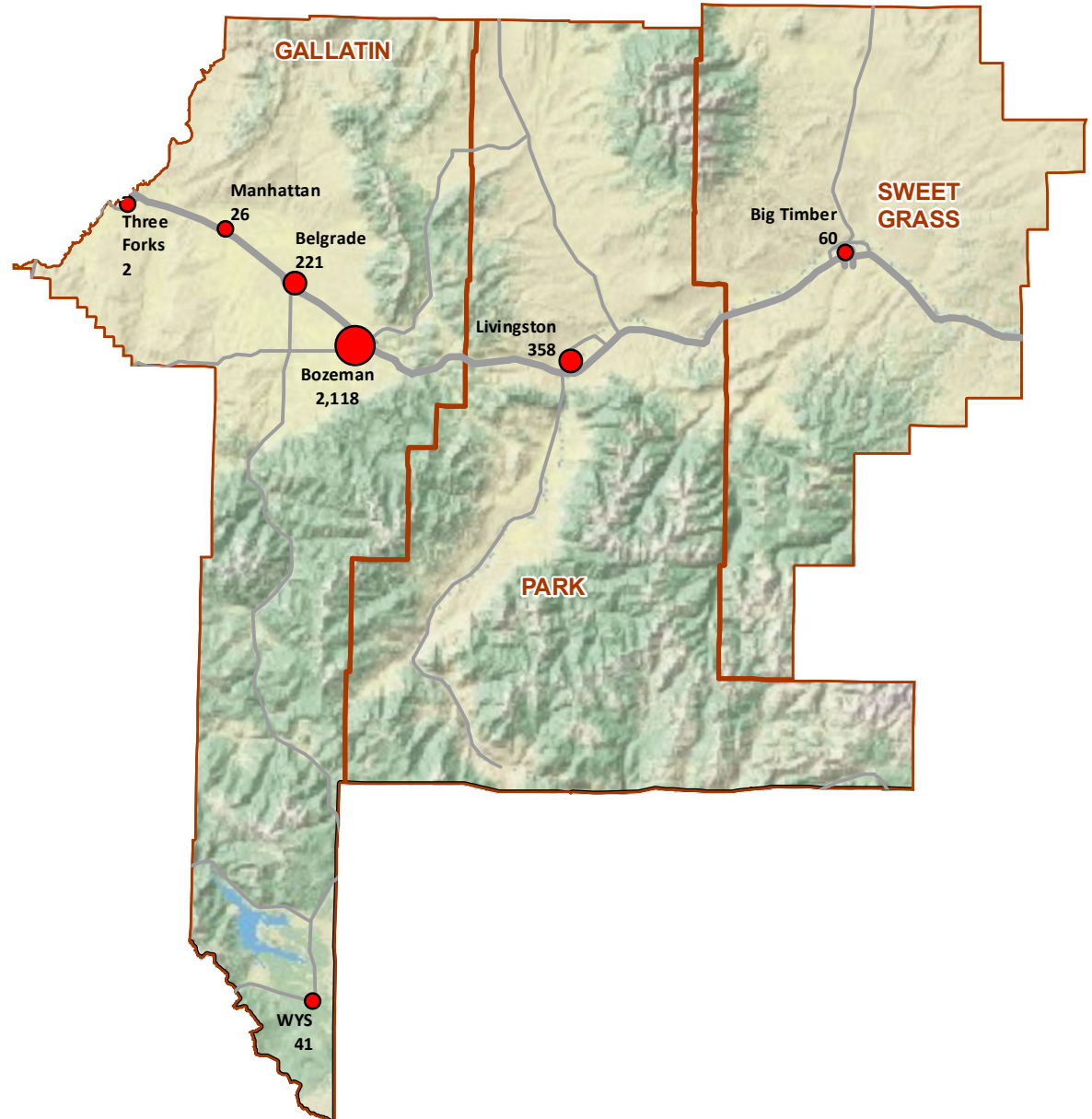
Region 8

Total Opened Cases

- 0 - 150
- 151 - 500
- 1,251 - 3,000



OPD Total New Cases Opened in Fiscal Year 2016



10 5 0 10 20 30 40 Miles

REGION 9 BILLINGS

Attorneys: 20
 Support Staff: 10
 Investigators: 3
 Contract Attorneys: 61
 FYE 2016 Cases Opened: 7,813
 District Court Cases: 3,351
 Cases in Courts of Limited Jurisdiction: 4,462
 District Courts: 4
 Courts of Limited Jurisdiction: 13
 Sq. Miles: 11,524
 Region Population (2010 Census): 180,032
 Region Poverty Pop. (2010 Census): 24,207

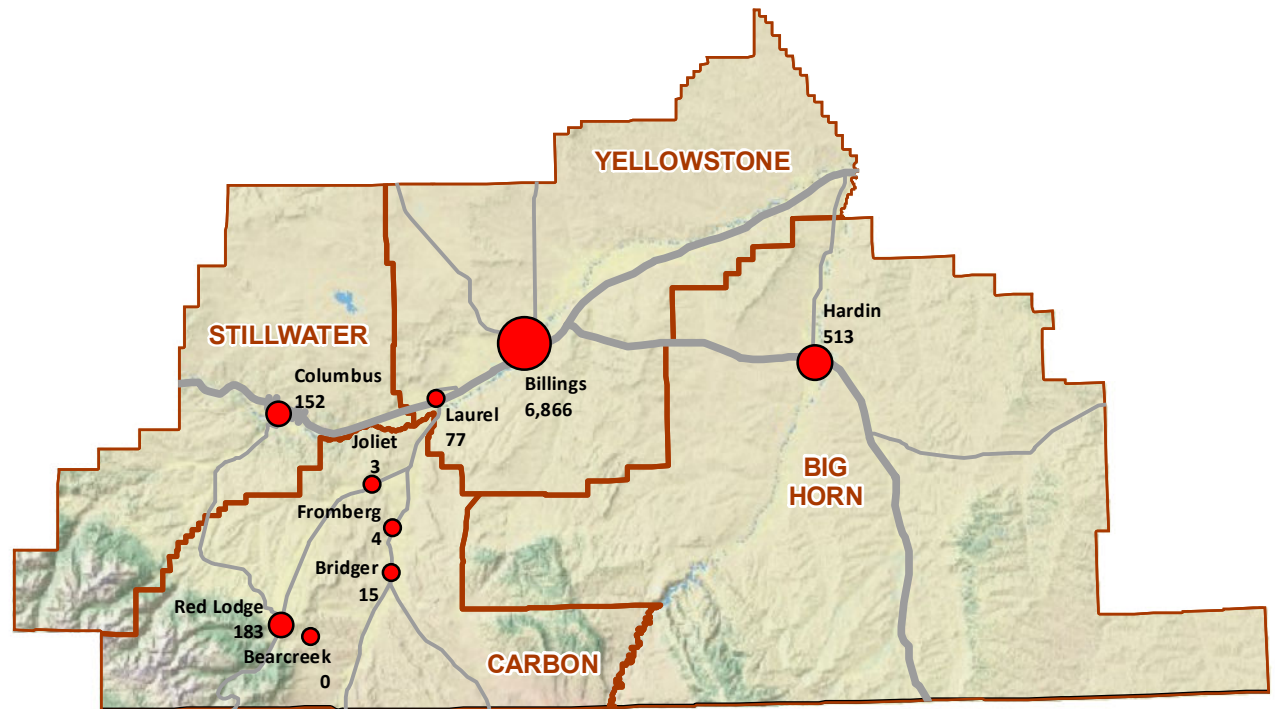
Region 9

Total Opened Cases

- 0 - 150
- 151 - 500
- 501 - 1,250
- 3,001 - 7,000



OPD Total New Cases Opened in Fiscal Year 2016



10 5 0 10 20 30 40 Miles

REGION 10 GLENDIVE

Attorneys: 3
 Support Staff: 1.25
 Investigators: 1
 Contract Attorneys: 27
 FYE 2016 Cases Opened: 1,002
 District Court Cases: 529
 Cases in Courts of Limited Jurisdiction: 473
 District Courts: 8
 Courts of Limited Jurisdiction: 19
 Sq. Miles: 15,290
 Region Population (2010 Census): 38,202
 Region Poverty Pop. (2010 Census): 6,116

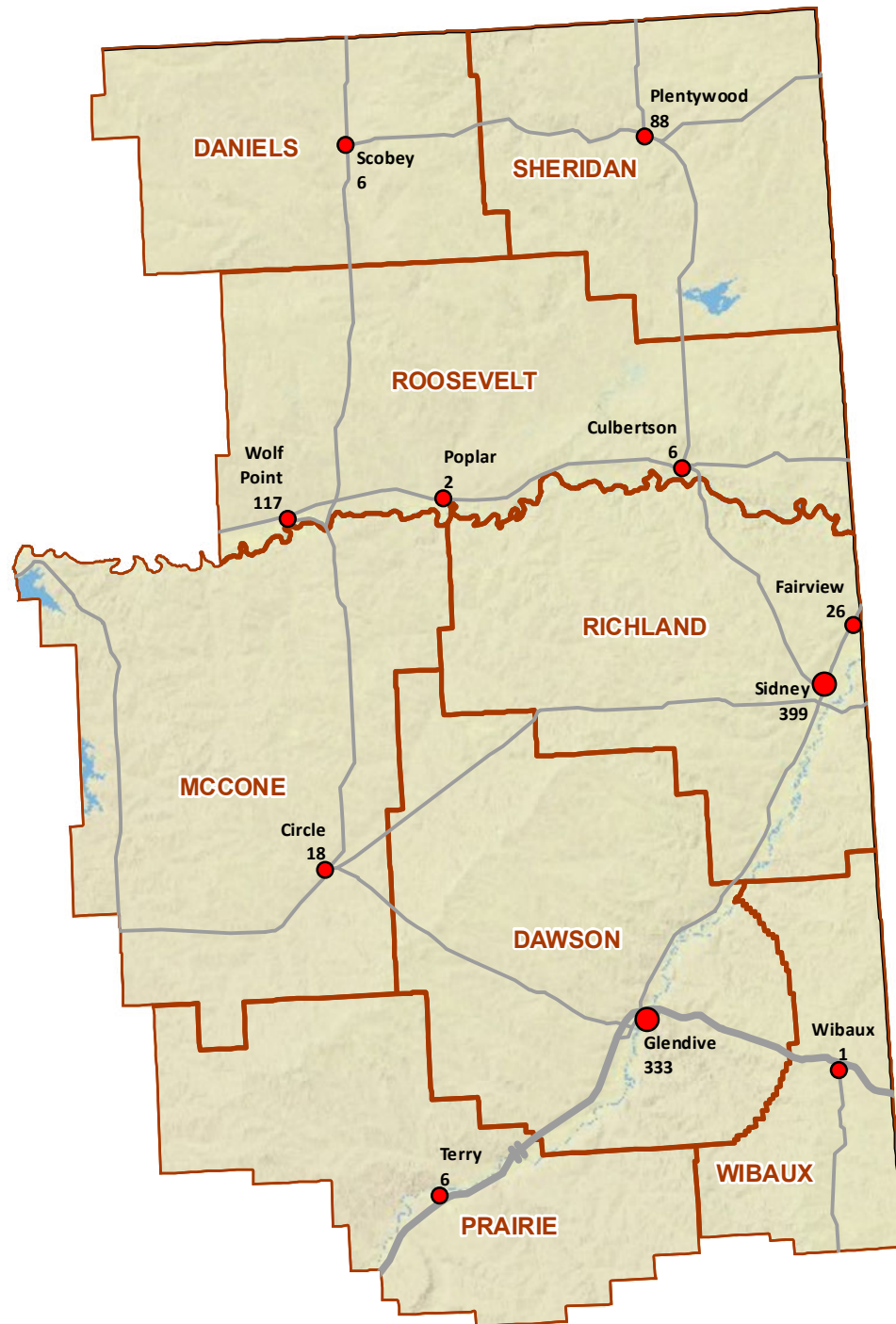
Region 10

Total Opened Cases

- 0 - 150
- 151 - 500



OPD Total New Cases Opened in Fiscal Year 2016



10 5 0 10 20 30 40 Miles

REGION 11 MILES CITY

Attorneys: 2
 Support Staff: 1
 Investigators: 1
 Contract Attorneys: 32
 FYE 2016 Cases Opened: 716
 District Court Cases: 331
 Cases in Courts of Limited Jurisdiction: 385
 District Courts: 7
 Courts of Limited Jurisdiction: 16
 Sq. Miles: 22,900
 Region Population (2010 Census): 28,649
 Region Poverty Pop. (2010 Census): 4,427

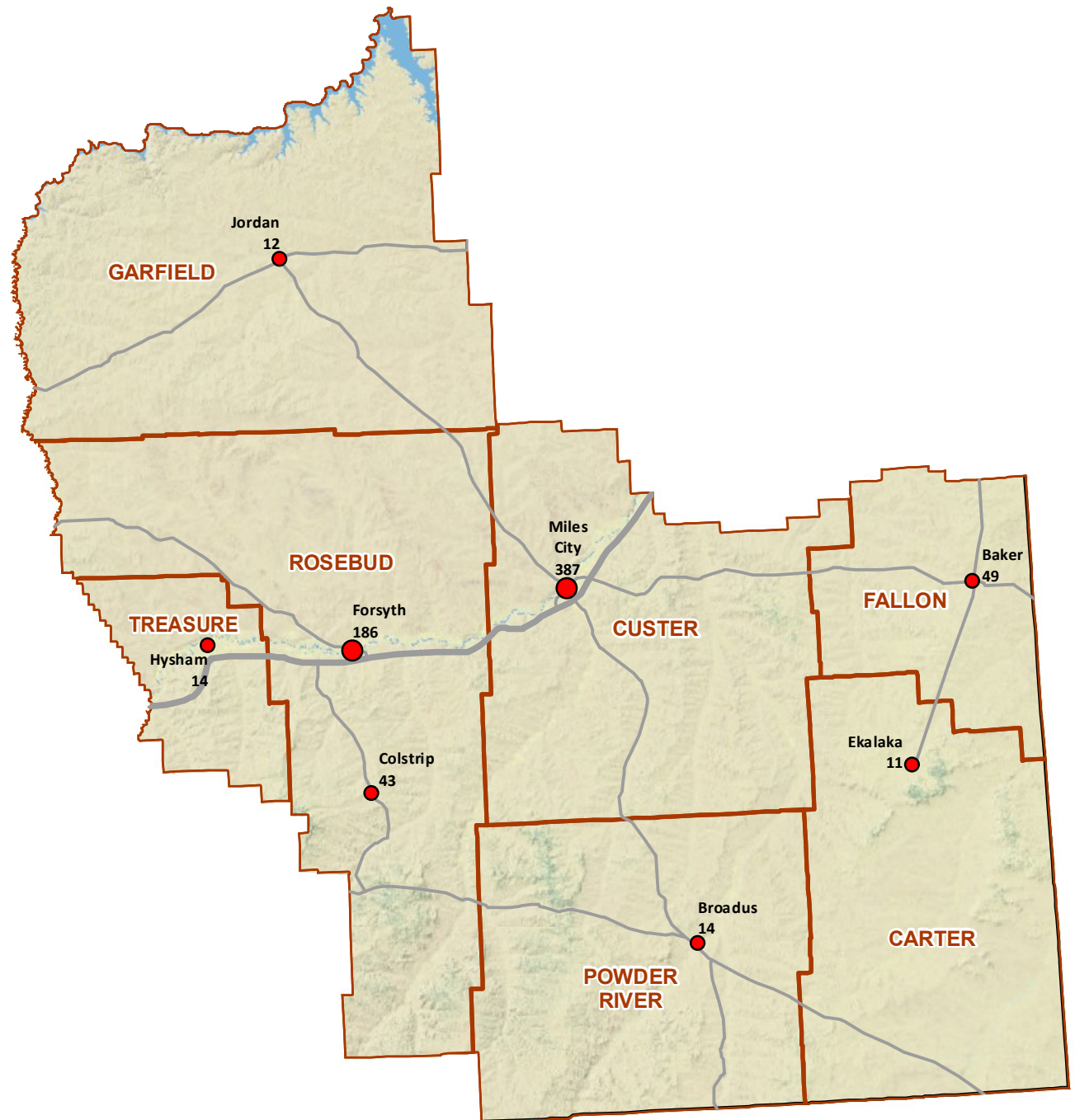
Region 11

Total Opened Cases

- 0 - 150
- 151 - 500



OPD Total New Cases Opened in Fiscal Year 2016



10 5 0 10 20 30 40 Miles



	Attorney	Support Staff	Investigators	Contract Attorneys
Central Services		18.75	1	
Chief Defender	1	0.94		
Appellate Defender	12	3		35
Major Crimes	3	1		5
Conflict Office	4.5	1		



OPD Staffing for Central Services, Chief Defender, Appellate, Major Crimes & Conflict Office

