



MONTANA STATE PUBLIC DEFENDER

44 West Park Street, Butte, MT 59701
T: 406.496.6080 F: 406.496.6098
publicdefender.mt.gov

December 3, 2018

Governor Steve Bullock
P.O. Box 200801
Helena, MT 59620-0801

The Montana Supreme Court
P.O. Box 203001
Helena, MT 59620-3001

The Montana Legislature
c/o Molly Petersen, Publications/Communications Officer
Legislative Services Division
P.O. Box 201706
Helena, MT 59620-1706

Dear Governor Bullock, Supreme Court Justices, and Legislators:

RE: Office of the State Public Defender Report
to the Governor, Supreme Court and Legislature

Pursuant to 47-1-125, MCA, the Office of the State Public Defender must provide a biennial report to the Governor, Supreme Court and Legislature. Each interim, the director also specifically reports to the Law and Justice Interim Committee.

Description of Report

1. All policies and procedures in effect for the operation and administration of the statewide public defender system and all practice standards established or being considered by the agency.
2. The number of deputy public defenders and the region supervised by each; and the number of attorney and non-attorney staff employed or contracted within the system, identified by region and office.
3. The number of new cases in which counsel was assigned to represent a party, identified by region, court and case type; and the total number of persons represented by the office, identified by division, region, court and case type.
4. The annual caseload and workload of each public defender, identified by region, court and case type.
5. The training programs conducted by the office and the number of attorney and non-attorney staff who attended each program; and the continuing education courses on criminal defense or criminal procedure attended by each public defender employed or contracted within the system.
6. Detailed expenditure data by court and case type.

*We provide effective professional legal services with equal access to quality
client-centered representation.*

Governor Bullock
Supreme Court Justices
Legislators
December 3, 2018
Page 2

This report is available at <http://publicdefender.mt.gov/Resources/Reports>.

Please feel free to contact me at 496-6084 or RSchaffer@mt.gov if you have any questions regarding the information in this report.

Sincerely,

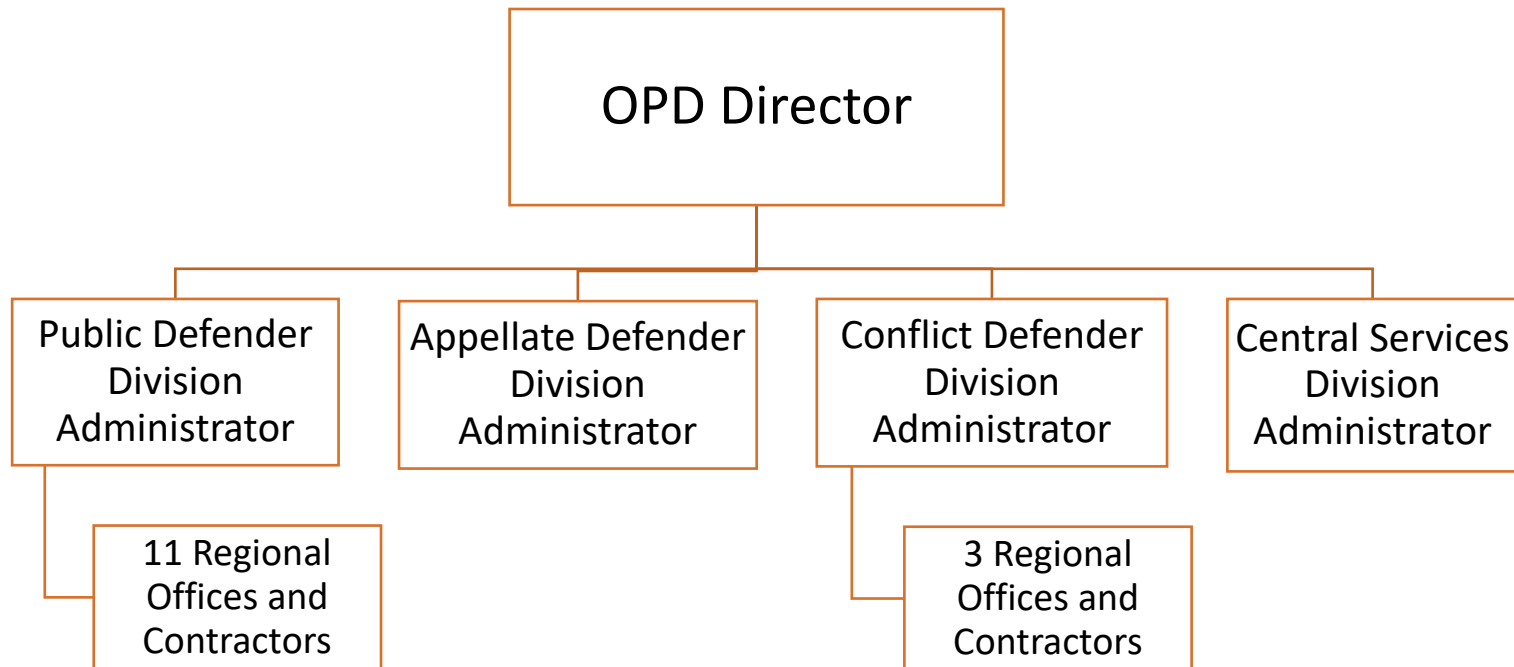
A handwritten signature in blue ink that reads "Rhonda Schaffer". The signature is fluid and cursive, with the first name "Rhonda" and last name "Schaffer" clearly legible.

Rhonda Schaffer
Director

cc: Carleen Green, Central Services Division Administrator

MONTANA STATE PUBLIC DEFENDER

For more information, contact Rhonda Schaffer, Director, at RSchaffer@mt.gov, or 496-6084.



OUR MISSION

We provide effective professional legal services with equal access to quality client-centered representation.



OUR VISION

As trained legal professionals, we strive to represent our clients in an effective and efficient manner to ensure a more fair and balanced justice system. We are dedicated and committed to improving overall outcomes for our clients and addressing the conditions that led to their involvement with the justice system.

MONTANA STATE PUBLIC DEFENDER

A blue ink signature of Peter B. Ohman.

Peter B. Ohman, Public Defender Division Administrator

A blue ink signature of Chad Wright.

Chad Wright, Appellate Defender Division Administrator

A blue ink signature of Rhonda Schaffer.

Rhonda Schaffer, Director

A blue ink signature of Nate McConnell.

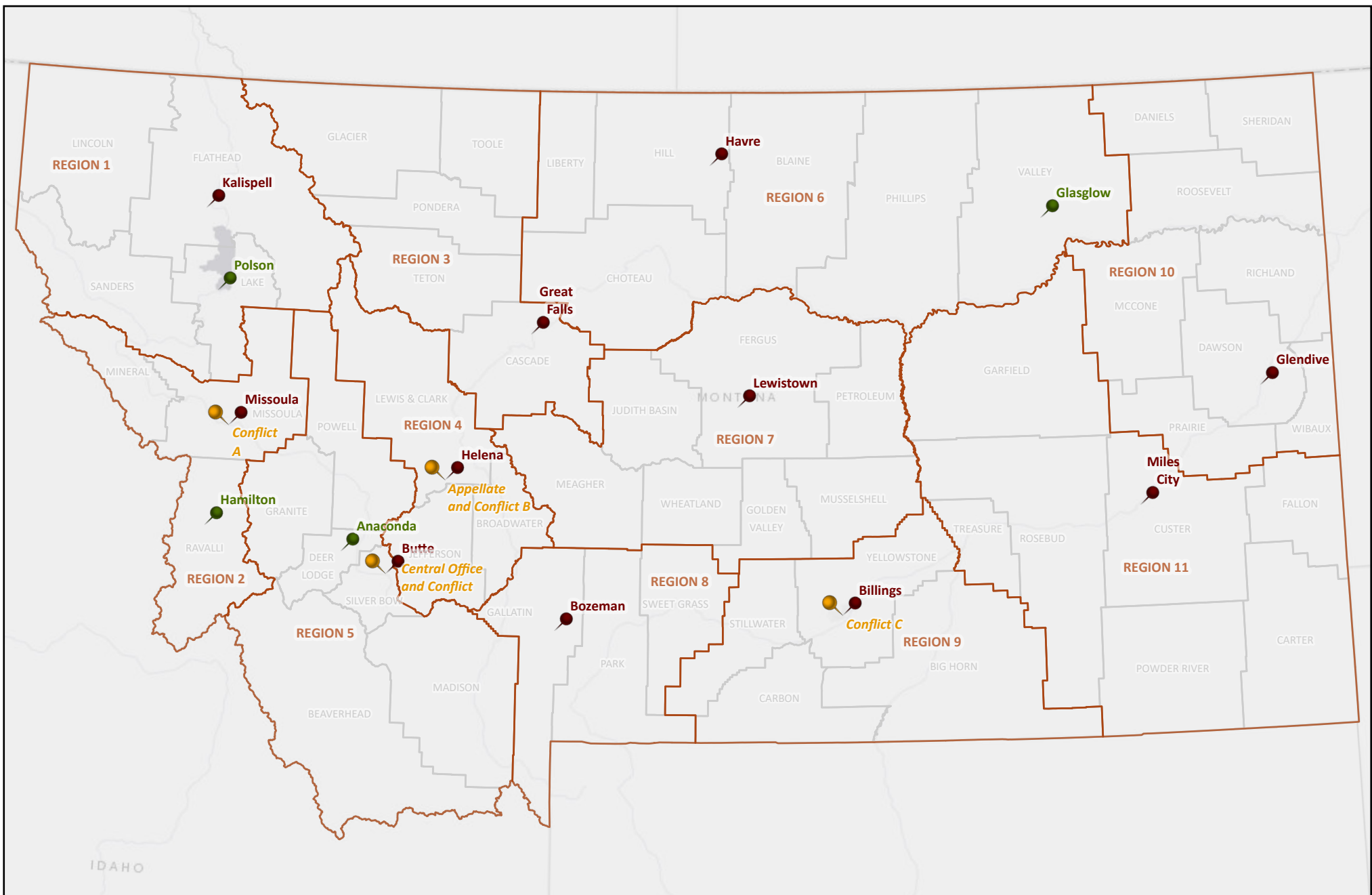
Nate McConnell, HR Legal and Training Coordinator

A black ink signature of Daniel Miller.

Daniel Miller, Conflict Defender Division Administrator

A blue ink signature of Carleen R. Green.

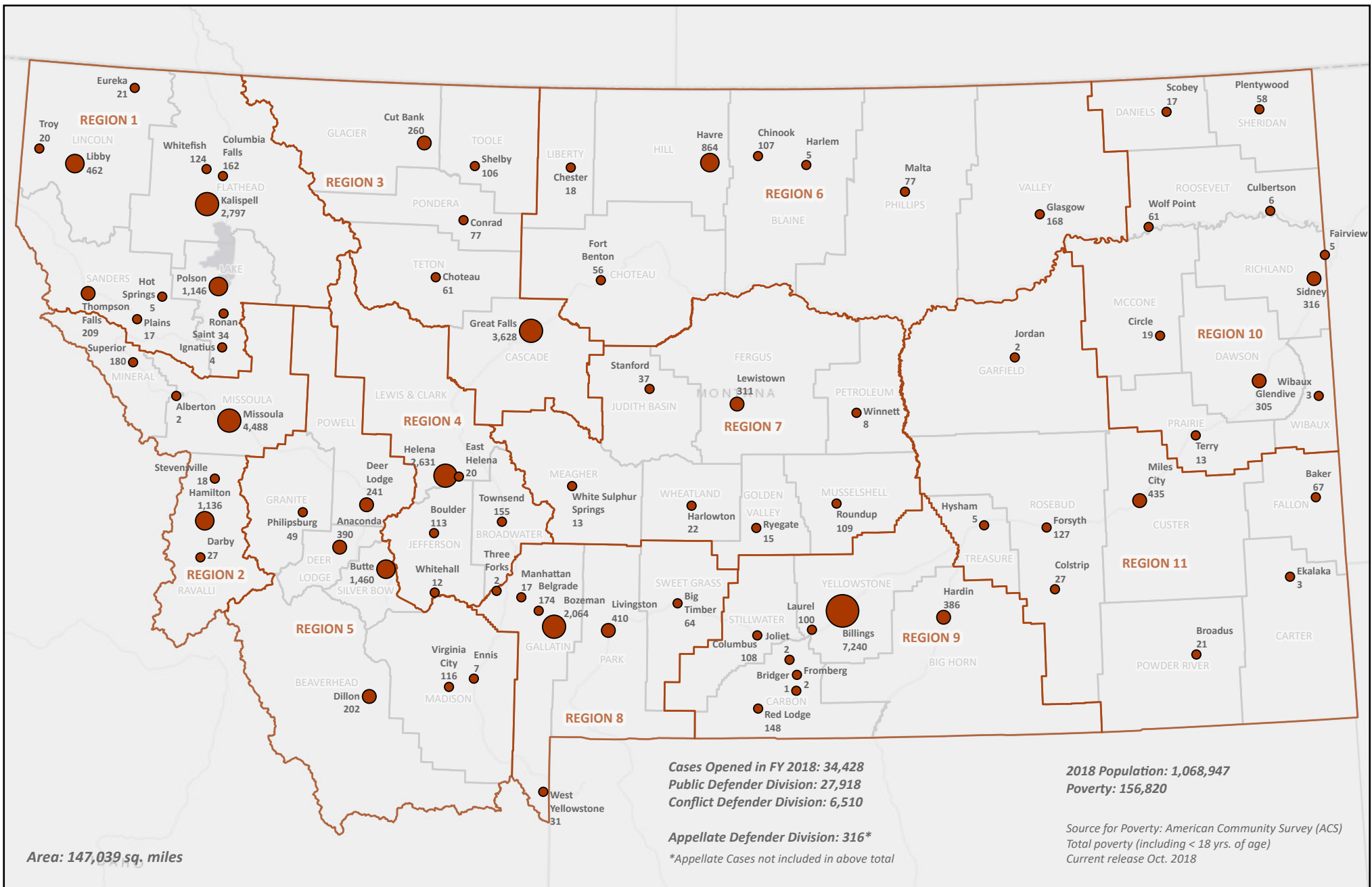
Carleen R. Green, Central Services Division Administrator



OPD Office Locations

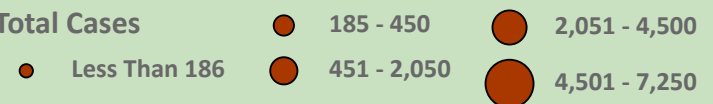
Office Type

- Regional Office
- Satellite Office
- Central Office, Appellate Office & Conflict Division Offices



Total Cases Opened FY 2018 Divisions 1 & 3

Total Cases



Region 1 - Kalispell

2018 Opened Cases

Total Cases

- Less than 186
- 186 - 450

- 450 - 2,050
- 2,051 - 4,500

Division 1

Attorneys: 21.0
Support Staff: 8.0
Investigators: 3.0
Social Workers: 1.0
Contract Attorneys: 38.0

Division 3

Attorneys: 0.5
Support Staff: 0.0
Investigators: 0.0

Total Cases Opened FY18: 5,001

- District Cases Opened: 2,014
- Cases Opened Courts of Limited Jurisdiction: 2,987

Number of District Courts: 4

Number of Courts of Limited Jurisdiction: 16

Number of Treatment Courts: 1

Regional Demographics

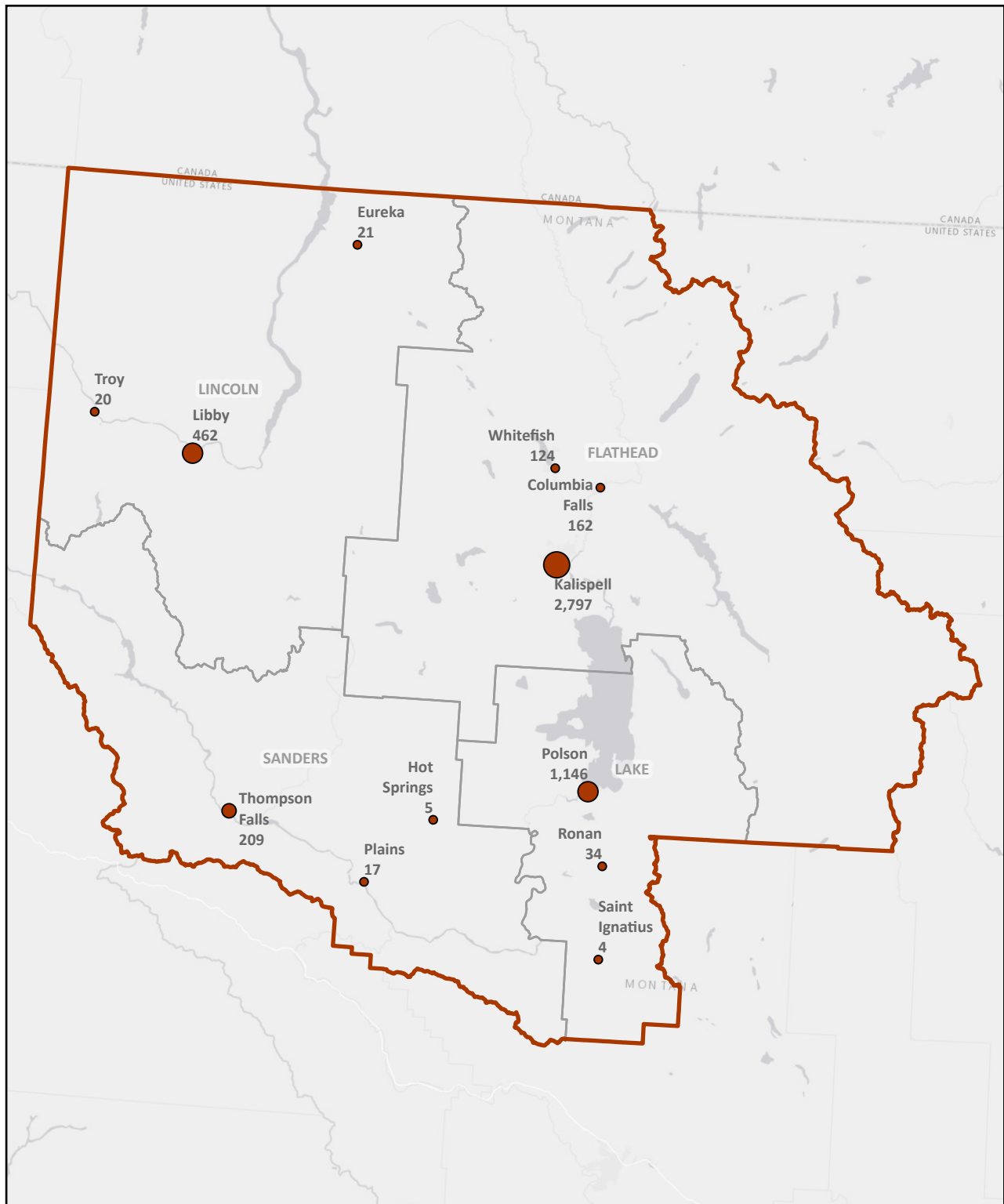
2018 Total Population: 163,590

2018 Poverty Pop.*: 26,671

Area (sq. mi.): 13,375

Population Density per sq. mi.: 12.23

**Source for Poverty: American Community Survey (ACS)
Total poverty (including < 18 yrs. of age)
Current release Oct. 2018*



Region 2 - Missoula

2018 Opened Cases

Total Cases

● Less than 186

● 450 - 2,050

● 2,051 - 4,500

Division 1

Attorneys: 26.0

Support Staff: 10.0

Investigators: 4.0

Social Workers: 2.0

Contract Attorneys: 58.0

Division 3

Attorneys: 7.0

Support Staff: 1.0

Investigators: 1.0

Total Cases Opened FY18: 5,851

· District Cases Opened: 2,251

· Cases Opened Courts of Limited Jurisdiction: 3,600

Number of District Courts: 3

Number of Courts of Limited Jurisdiction: 10

Number of Treatment Courts: 4

Regional Demographics

2018 Total Population: 167,413

2018 Poverty Pop.*: 27,757

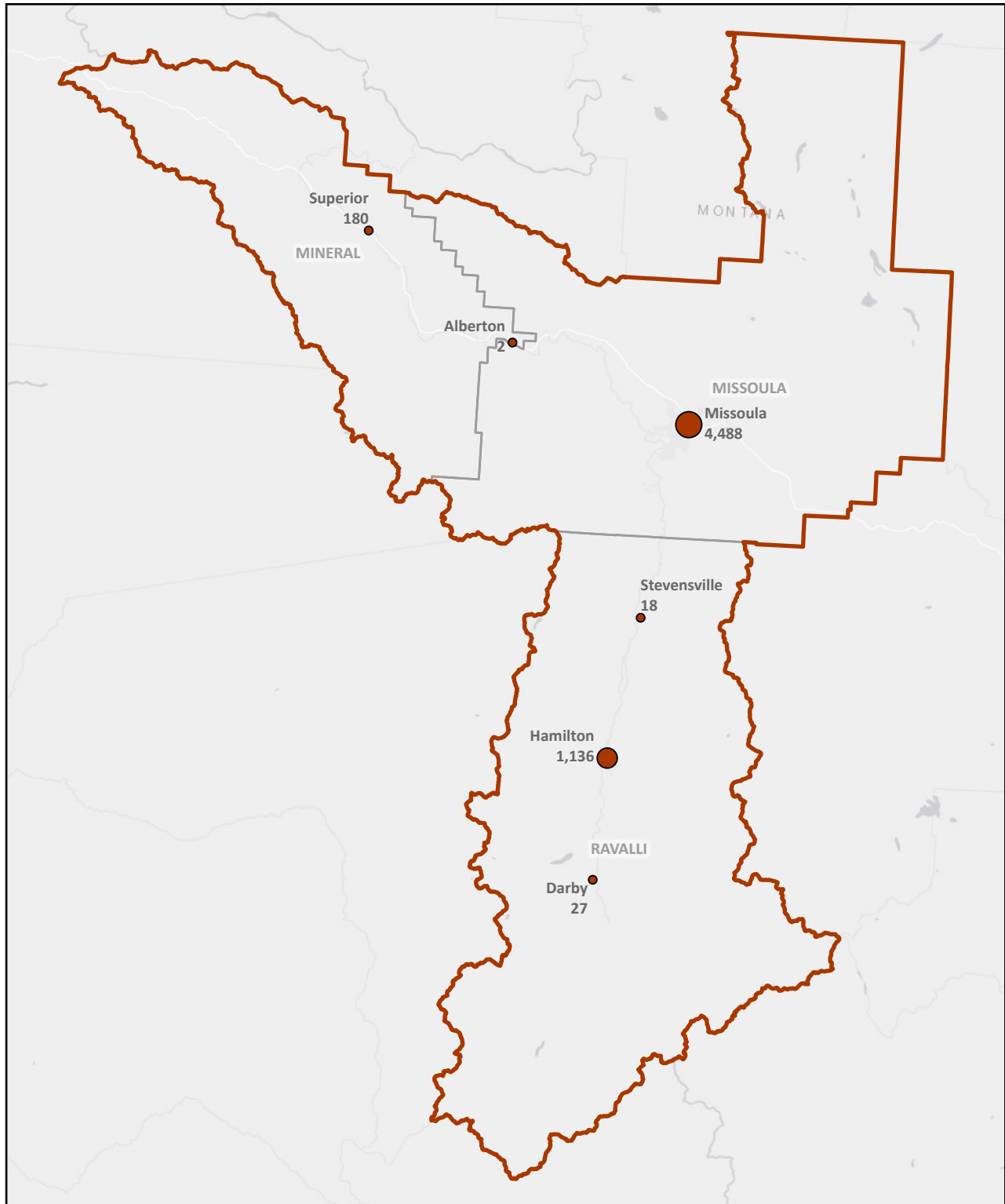
Area (sq. mi.): 6,242

Population Density per sq. mi.: 26.82

**Source for Poverty: American Community Survey (ACS)*

Total poverty (including < 18 yrs. of age)

Current release Oct. 2018



Region 3 - Great Falls

2018 Opened Cases

Total Cases

● Less than 186

● 186 - 450

● 2,051 - 4,500

Division 1

Attorneys: 14.0

Support Staff: 7.0

Investigators: 1.0

Social Workers: 1.0

Contract Attorneys: 56.0

Division 3

Attorneys: 1.0

Support Staff: 0.0

Investigators: 0.0

Total Cases Opened FY18: 4,132

· District Cases Opened: 2,262

· Cases Opened Courts of Limited Jurisdiction: 1,870

Number of District Courts: 5

Number of Courts of Limited Jurisdiction: 16

Number of Treatment Courts: 3

Regional Demographics

2018 Total Population: 113,919

2018 Poverty Pop.*: 19,459

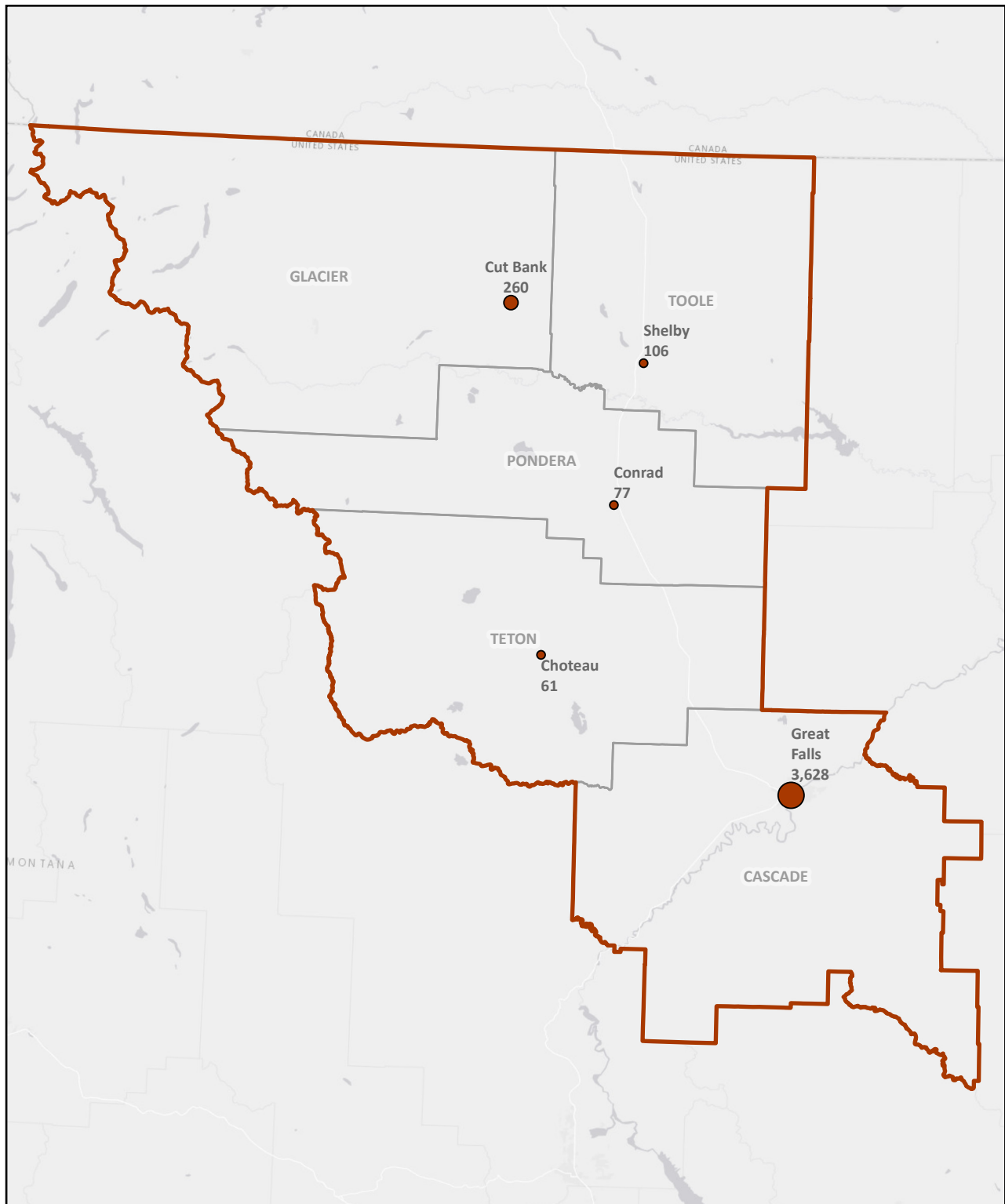
Area (sq. mi.): 11,627

Population Density per sq. mi.: 9.80

**Source for Poverty: American Community Survey (ACS)*

Total poverty (including < 18 yrs. of age)

Current release Oct. 2018



Region 4 - Helena

2018 Opened Cases

Total Cases

● Less than 186

● 2,051 - 4,500

Division 1

Attorneys: 13.5

Support Staff: 5.0

Investigators: 2.0

Social Workers: 1.0

Contract Attorneys: 44.0

Division 3

Attorneys: 1.0

Support Staff: 1.0

Investigators: 0.0

Total Cases Opened FY18: 2,780

· District Cases Opened: 1,261

· Cases Opened Courts of Limited Jurisdiction: 1,519

Number of District Courts: 3

Number of Courts of Limited Jurisdiction: 8

Number of Treatment Courts: 2

Regional Demographics

2018 Total Population: 86,582

2018 Poverty Pop.*: 9,829

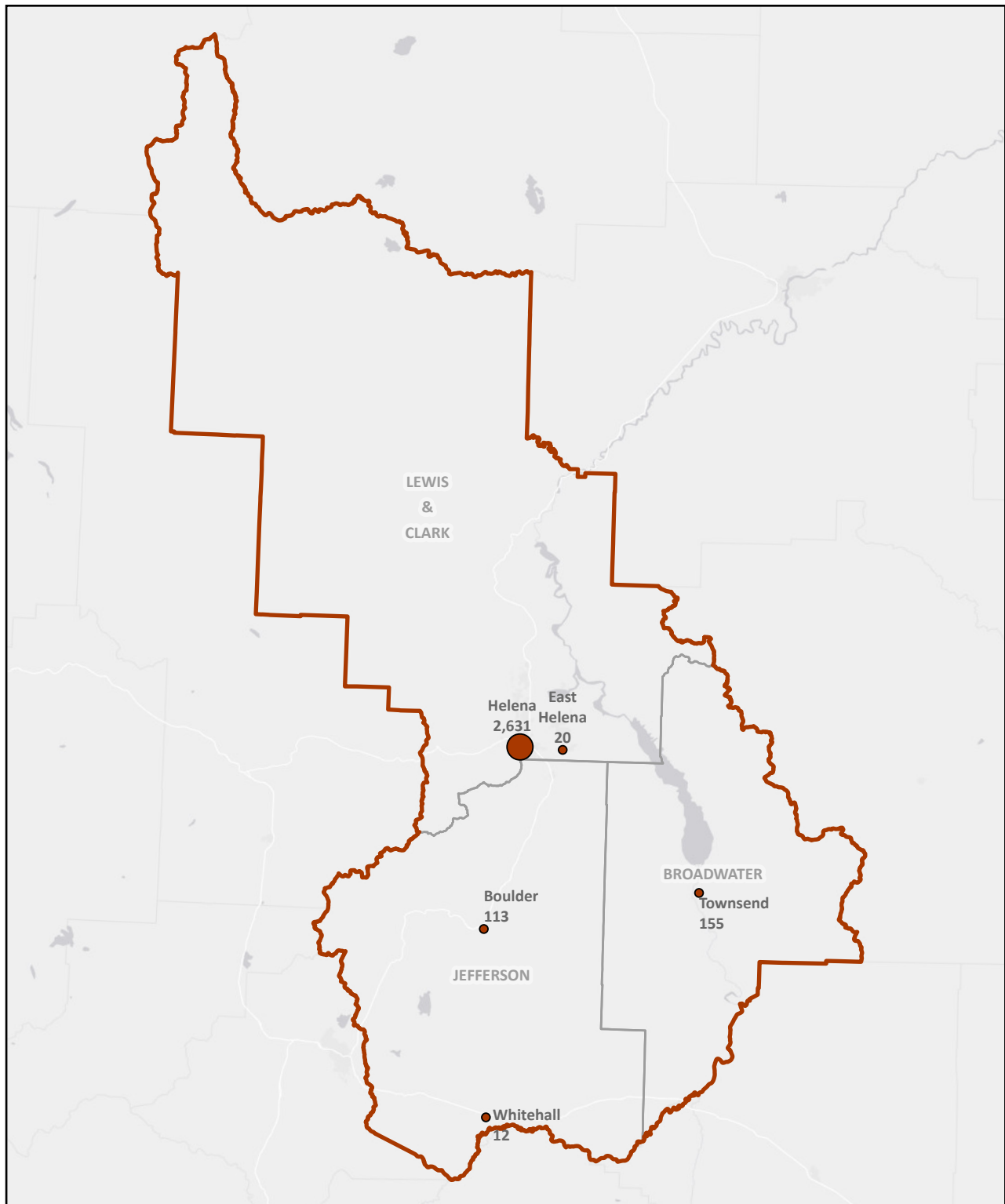
Area (sq. mi.): 6,396

Population Density per sq. mi.: 13.54

**Source for Poverty: American Community Survey (ACS)*

Total poverty (including < 18 yrs. of age)

Current release Oct. 2018



Region 5 - Butte

2018 Opened Cases

Total Cases

● Less than 186

● 186 - 450

● 450 - 2,050

Division 1

Attorneys: 10.0

Support Staff: 4.0

Investigators: 1.0

Social Workers: 0.0

Contract Attorneys: 66.0

Division 3

Attorneys: 1.0

Support Staff: 0.0

Investigators: 0.0

Total Cases Opened FY18: 2,465

· District Cases Opened: 1,183

· Cases Opened Courts of Limited Jurisdiction: 1,282

Number of District Courts: 6

Number of Courts of Limited Jurisdiction: 14

Number of Treatment Courts: 3

Regional Demographics

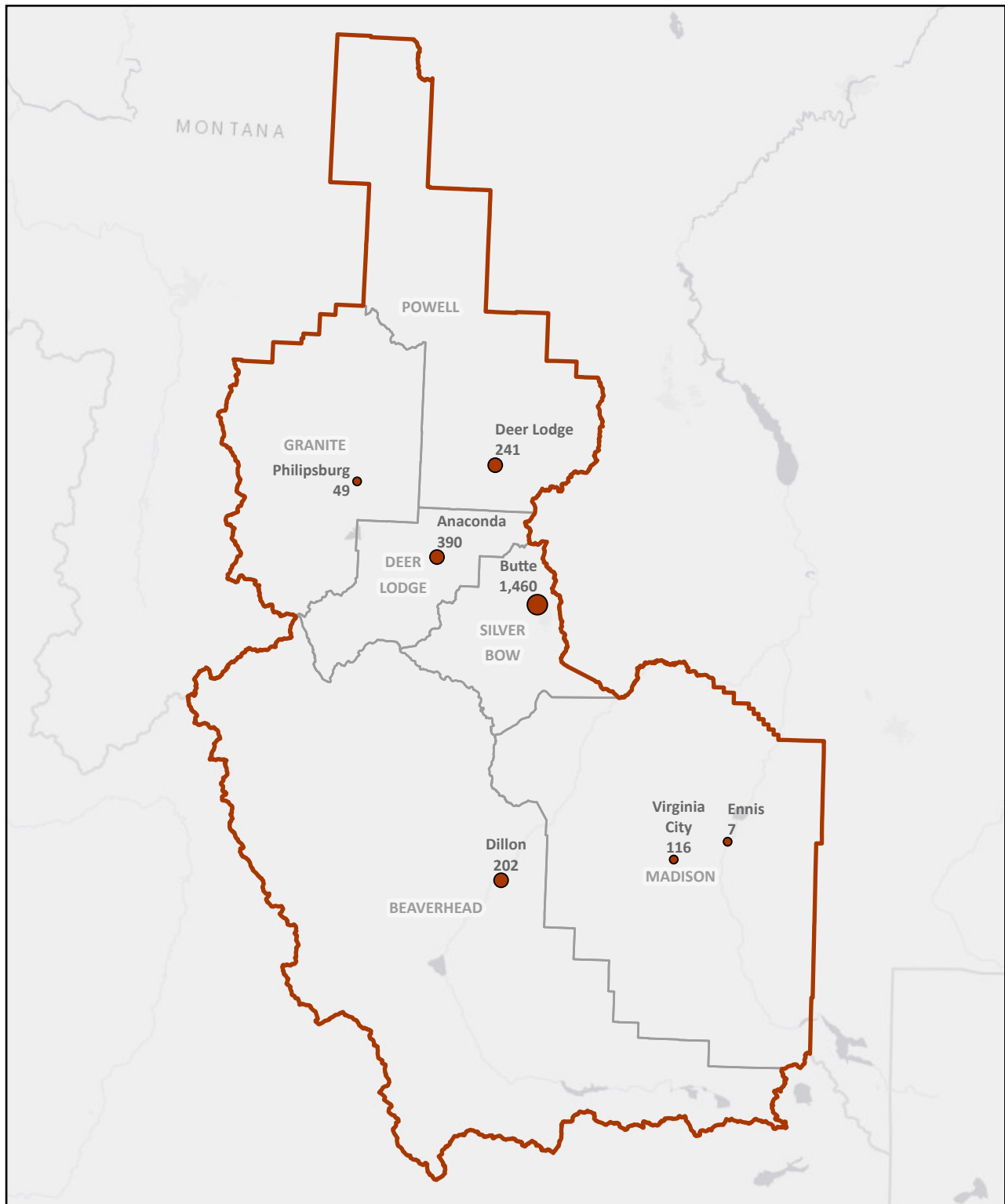
2018 Total Population: 72,136

2018 Poverty Pop.*: 12,476

Area (sq. mi.): 14,701

Population Density per sq. mi.: 4.91

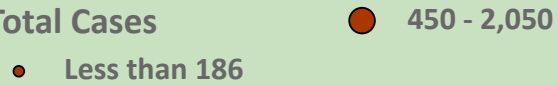
**Source for Poverty: American Community Survey (ACS)
Total poverty (including < 18 yrs. of age)
Current release Oct. 2018*



Region 6 - Havre

2018 Opened Cases

Total Cases



Division 1

Attorneys: 5.0
Support Staff: 3.0
Investigators: 1.0
Social Workers: 0.0
Contract Attorneys: 41.0

Division 3

Attorneys: 0.0
Support Staff: 0.0
Investigators: 0.0

Total Cases Opened FY18: 1,295

- District Cases Opened: 616
- Cases Opened Courts of Limited Jurisdiction: 679

Number of District Courts: 6

Number of Courts of Limited Jurisdiction: 16

Number of Treatment Courts: 2

Regional Demographics

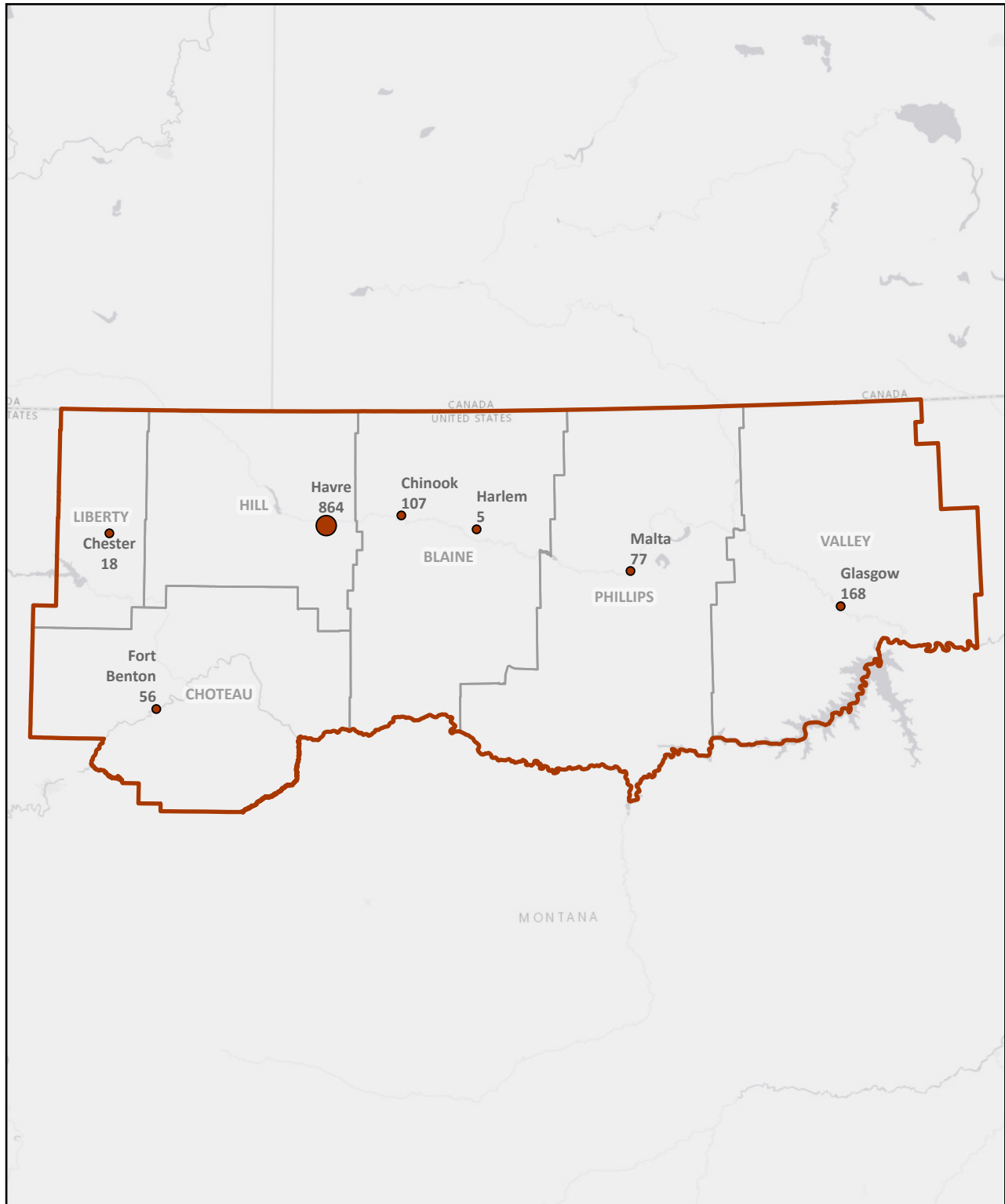
2018 Total Population: 42,678

2018 Poverty Pop.*: 8,490

Area (sq. mi.): 22,873

Population Density per sq. mi.: 1.87

**Source for Poverty: American Community Survey (ACS)
Total poverty (including < 18 yrs. of age)
Current release Oct. 2018*



Region 7 - Lewistown

2018 Opened Cases

Total Cases

- 186 - 450
- Less than 186

Division 1

Attorneys: 2.0
Support Staff: 2.0
Investigators: 0.0
Social Workers: 0.0
Contract Attorneys: 41.0

Division 3

Attorneys: 0.0
Support Staff: 0.0
Investigators: 0.0

Total Cases Opened FY18: 514

- District Cases Opened: 323
- Cases Opened Courts of Limited Jurisdiction: 191

Number of District Courts: 7

Number of Courts of Limited Jurisdiction: 17

Number of Treatment Courts: 0

Regional Demographics

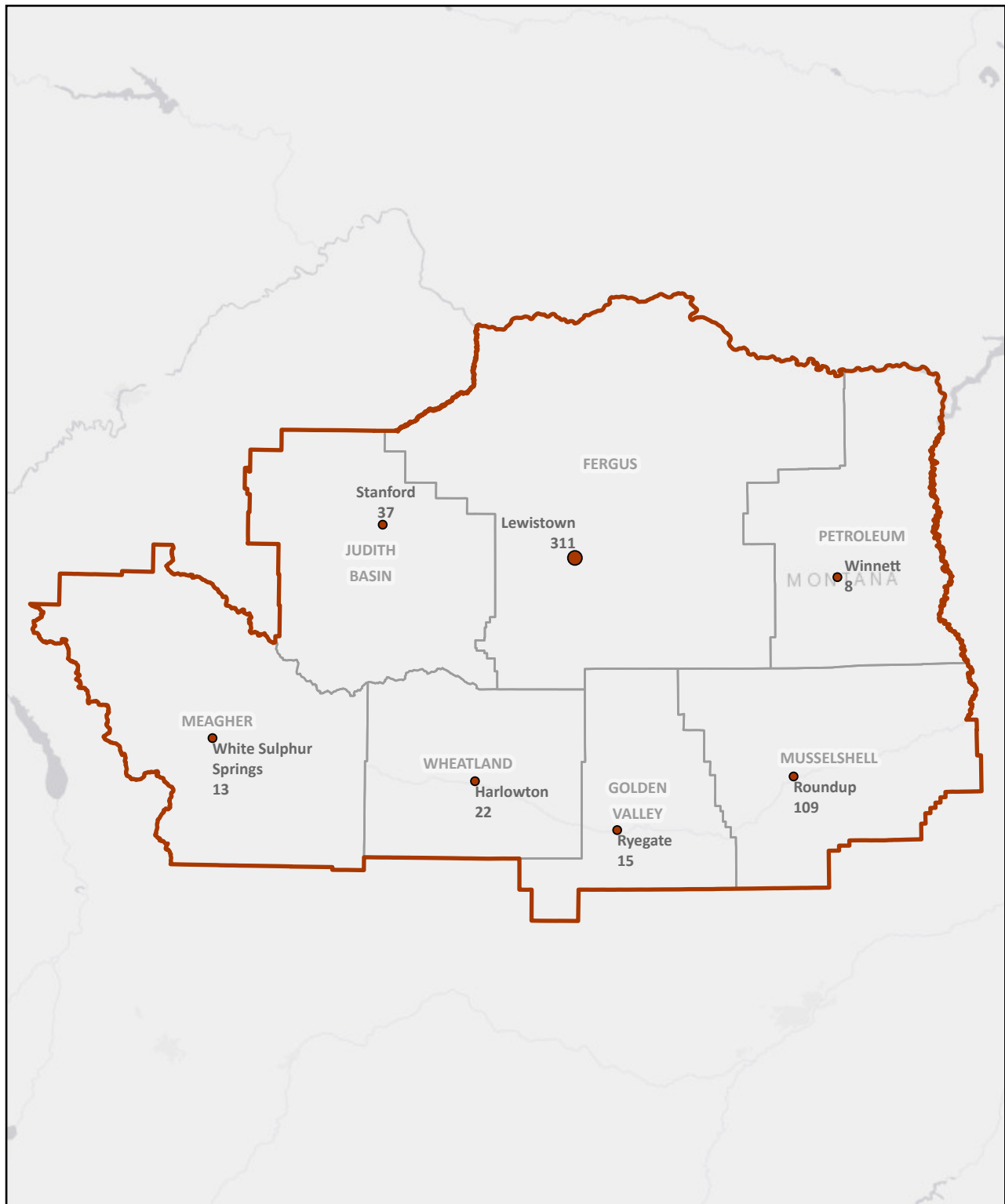
2018 Total Population: 23,568

2018 Poverty Pop.*: 3,534

Area (sq. mi.): 14,765

Population Density per sq. mi.: 1.60

**Source for Poverty: American Community Survey (ACS)
Total poverty (including < 18 yrs. of age)
Current release Oct. 2018*



Region 8 - Bozeman

2018 Opened Cases

Total Cases

● Less than 186

● 186 - 450

● 2,051 - 4,500

Division 1

Attorneys: 12.0

Support Staff: 6.0

Investigators: 2.0

Social Workers: 1.0

Contract Attorneys: 33.0

Division 3

Attorneys: 1.0

Support Staff: 0.0

Investigators: 0.0

Total Cases Opened FY18: 2,762

· District Cases Opened: 919

· Cases Opened Courts of Limited Jurisdiction: 1,843

Number of District Courts: 3

Number of Courts of Limited Jurisdiction: 10

Number of Treatment Courts: 2

Regional Demographics

2018 Total Population: 129,867

2018 Poverty Pop.*: 17,237

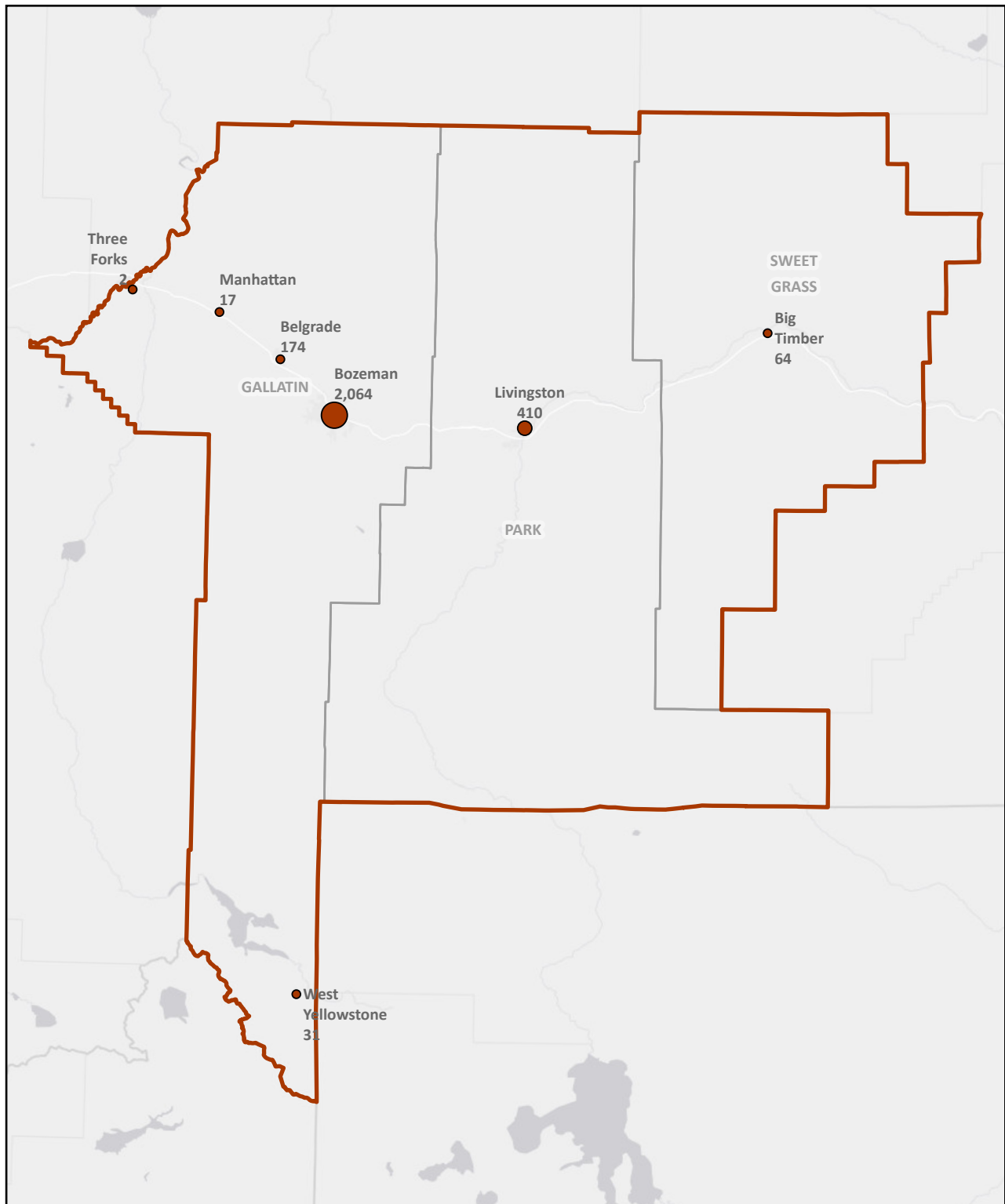
Area (sq. mi.): 7,307

Population Density per sq. mi.: 17.77

**Source for Poverty: American Community Survey (ACS)*

Total poverty (including < 18 yrs. of age)

Current release Oct. 2018



Region 9 - Billings

2018 Opened Cases

Total Cases



Division 1

Attorneys: 28.5
Support Staff: 11.5
Investigators: 3.0
Social Workers: 2.0
Contract Attorneys: 51.0

Division 3

Attorneys: 5.5
Support Staff: 1.0
Investigators: 1.0

Total Cases Opened FY18: 7,987

- District Cases Opened: 3,557
- Cases Opened Courts of Limited Jurisdiction: 4,430

Number of District Courts: 4

Number of Courts of Limited Jurisdiction: 13

Number of Treatment Courts: 6

Regional Demographics

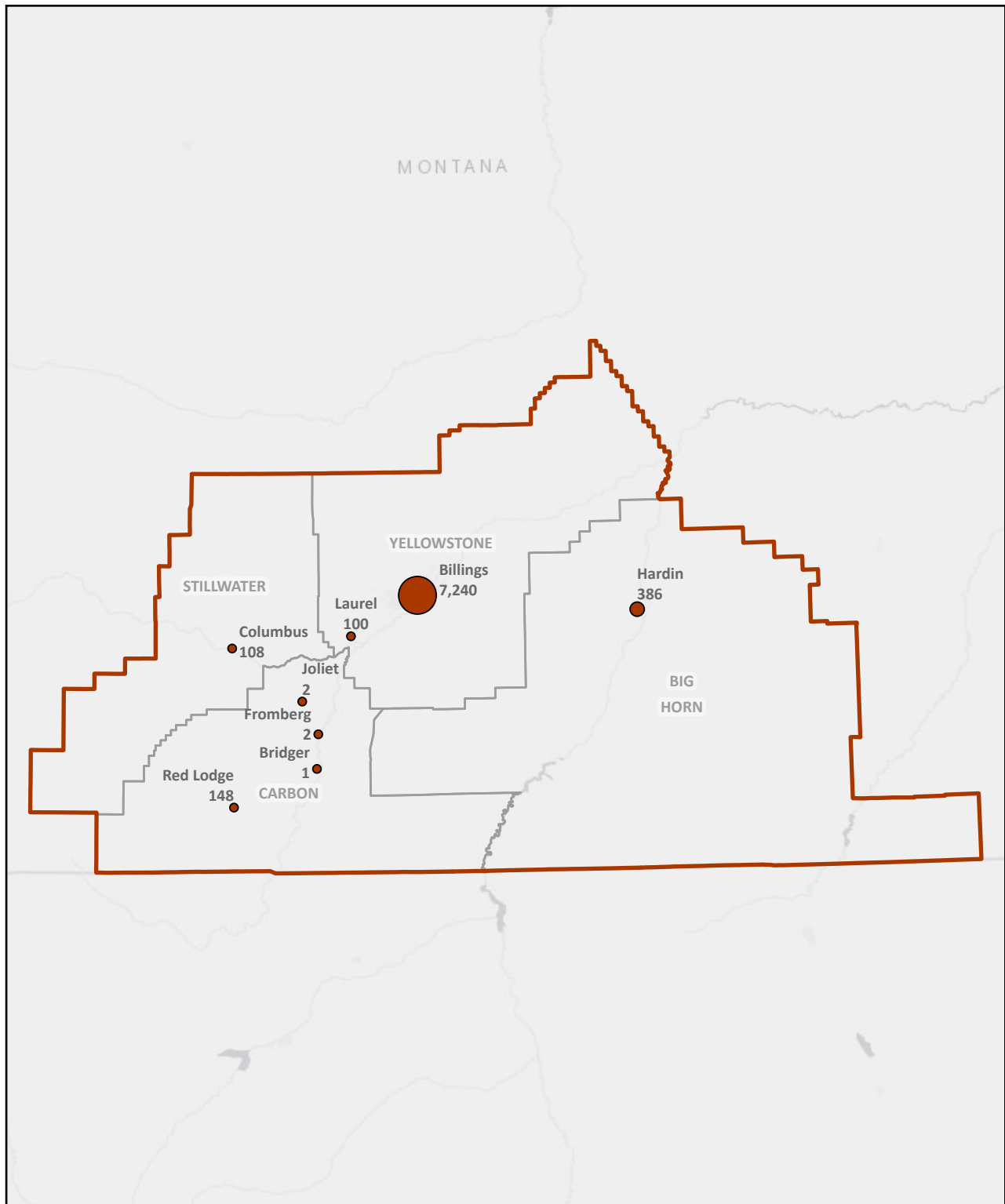
2018 Total Population: 198,872

2018 Poverty Pop.*: 22,738

Area (sq. mi.): 11,530

Population Density per sq. mi.: 17.25

**Source for Poverty: American Community Survey (ACS)
Total poverty (including < 18 yrs. of age)
Current release Oct. 2018*



Region 10 - Glendive

2018 Opened Cases

Total Cases



Division 1

Attorneys: 3.0
Support Staff: 1.5
Investigators: 1.0
Social Workers: 0.0
Contract Attorneys: 32.0

Division 3

Attorneys: 0.0
Support Staff: 0.0
Investigators: 0.0

Total Cases Opened FY18: 803

- District Cases Opened: 496
- Cases Opened Courts of Limited Jurisdiction: 307

Number of District Courts: 8

Number of Courts of Limited Jurisdiction: 19

Number of Treatment Courts: 1

Regional Demographics

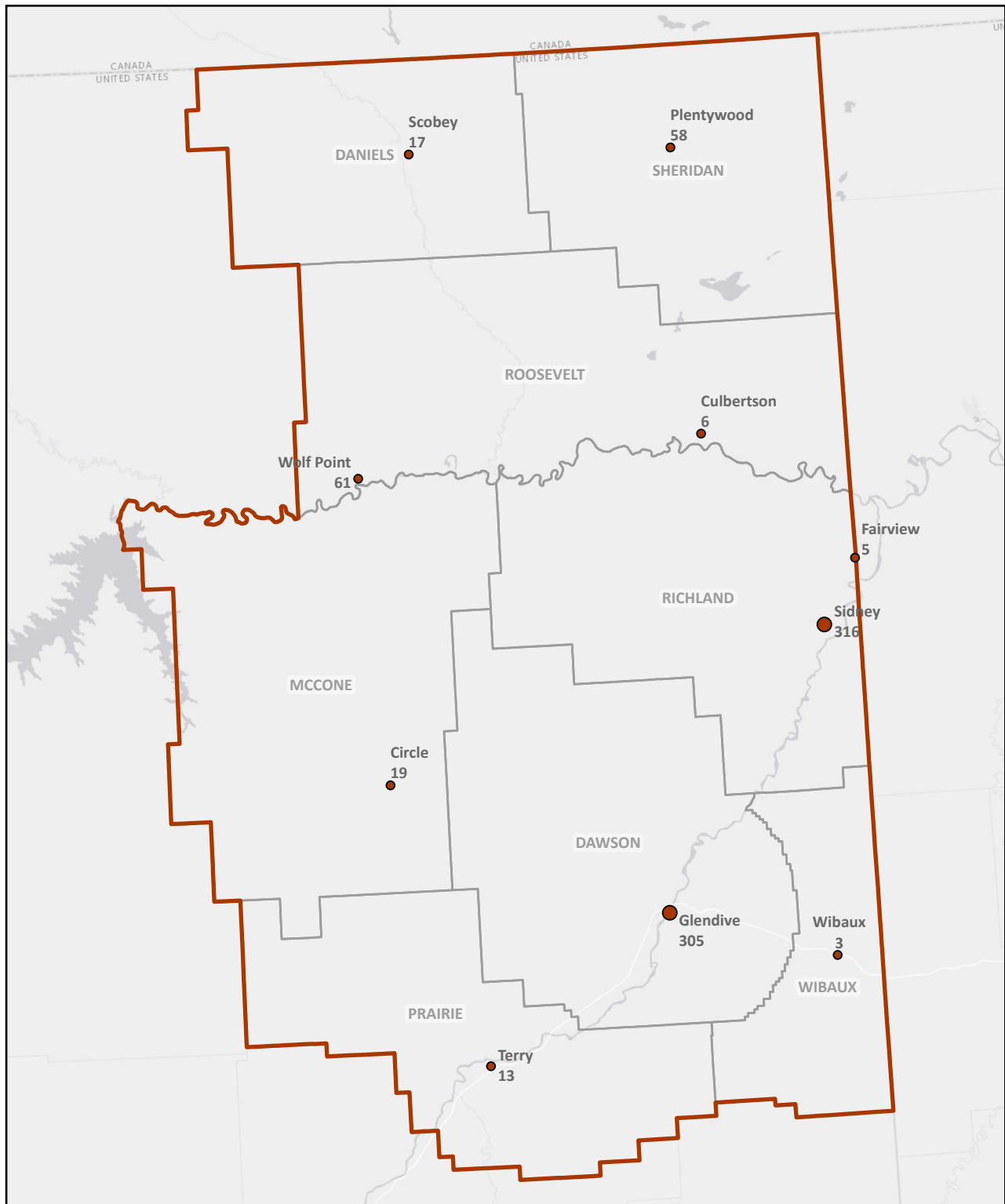
2018 Total Population: 40,919

2018 Poverty Pop.*: 6,363

Area (sq. mi.): 15,304

Population Density per sq. mi.: 2.67

**Source for Poverty: American Community Survey (ACS)
Total poverty (including < 18 yrs. of age)
Current release Oct. 2018*



Region 11 - Miles City

2018 Opened Cases

Total Cases

- 186 - 450
- Less than 186

Division 1

Attorneys: 3.0
Support Staff: 1.0
Investigators: 1.0
Social Workers: 0.0
Contract Attorneys: 32.0

Division 3

Attorneys: 0.0
Support Staff: 0.0
Investigators: 0.0

Total Cases Opened FY18: 687

- District Cases Opened: 428
- Cases Opened Courts of Limited Jurisdiction: 259

Number of District Courts: 7

Number of Courts of Limited Jurisdiction: 16

Number of Treatment Courts: 1

Regional Demographics

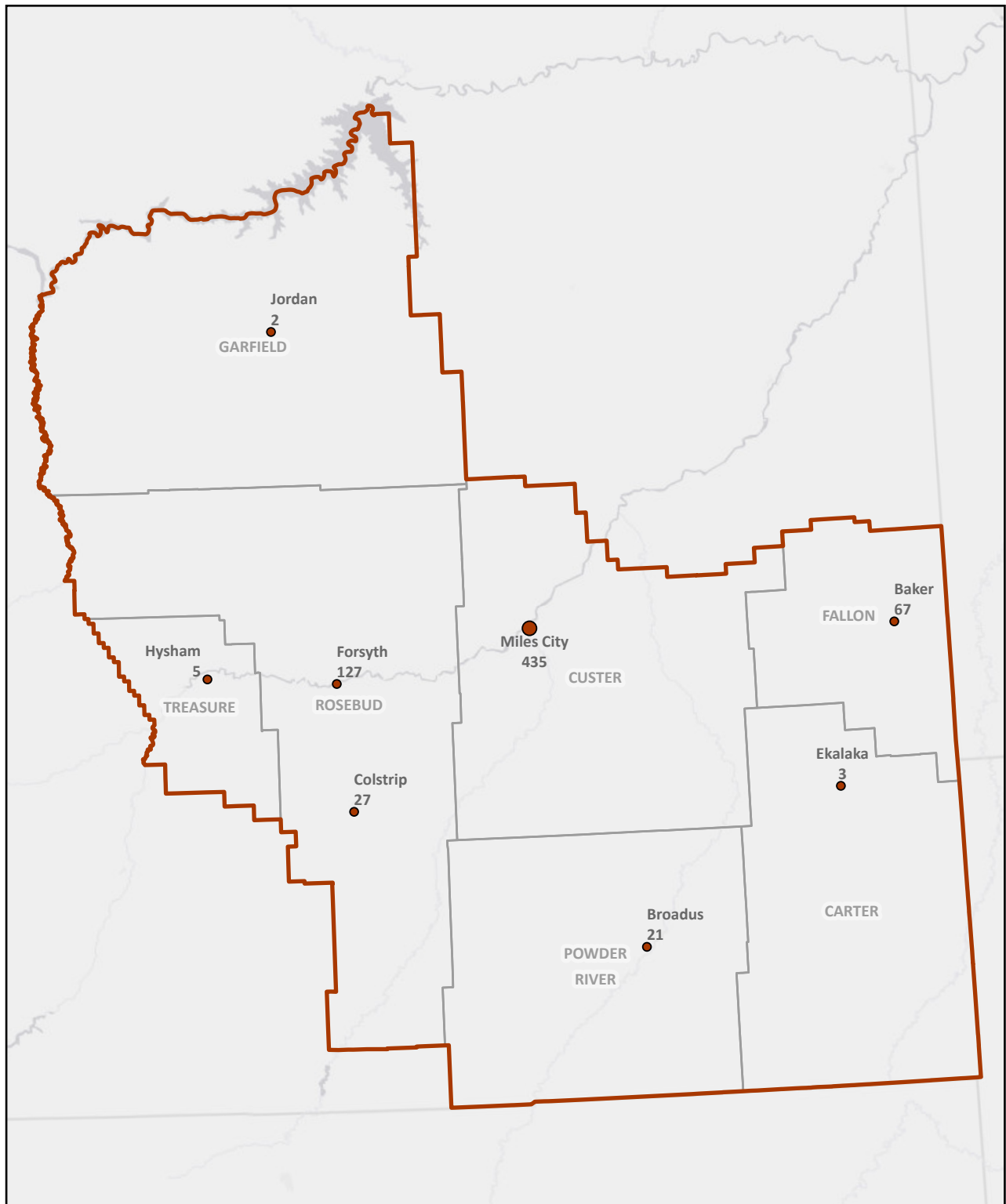
2018 Total Population: 29,403

2018 Poverty Pop.*: 2,267

Area (sq. mi.): 22,920

Population Density per sq. mi.: 1.28

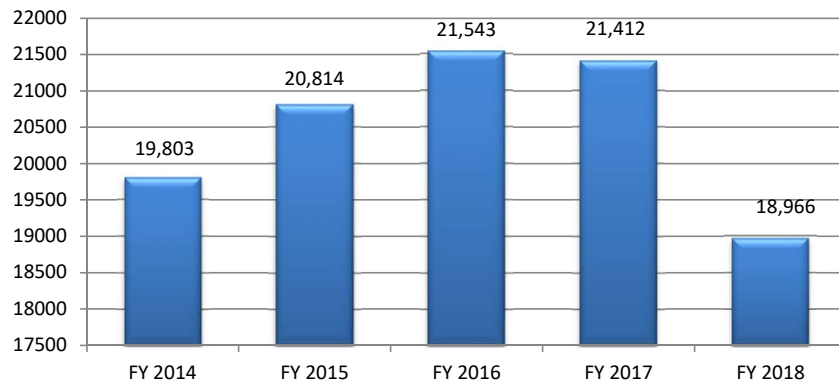
**Source for Poverty: American Community Survey (ACS)
Total poverty (including < 18 yrs. of age)
Current release Oct. 2018*



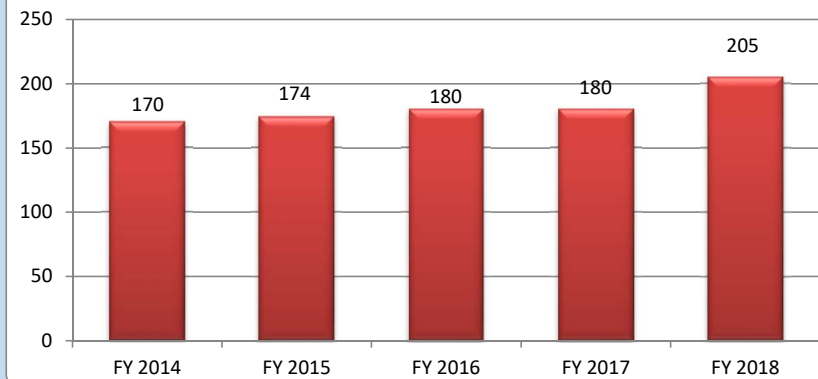


MONTANA STATE PUBLIC DEFENDER CASETYPE SNAPSHOT: LC (ALL LOWER COURT CASES)

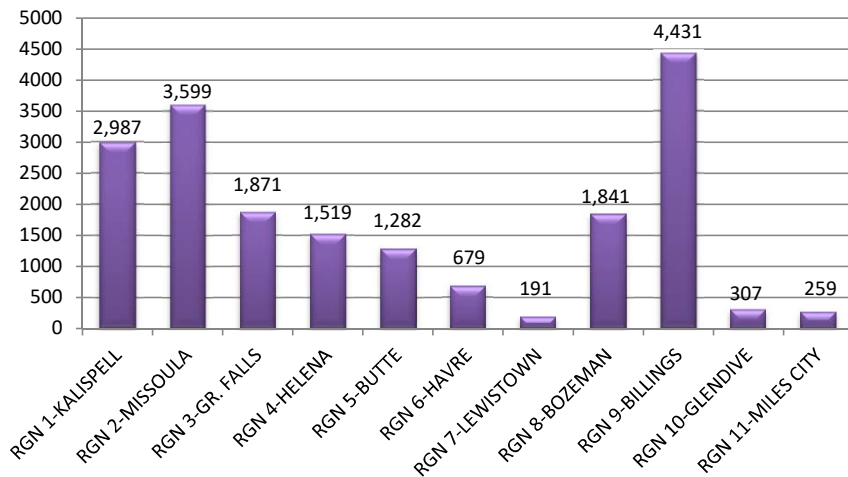
Lower Courts - Case Counts by Year



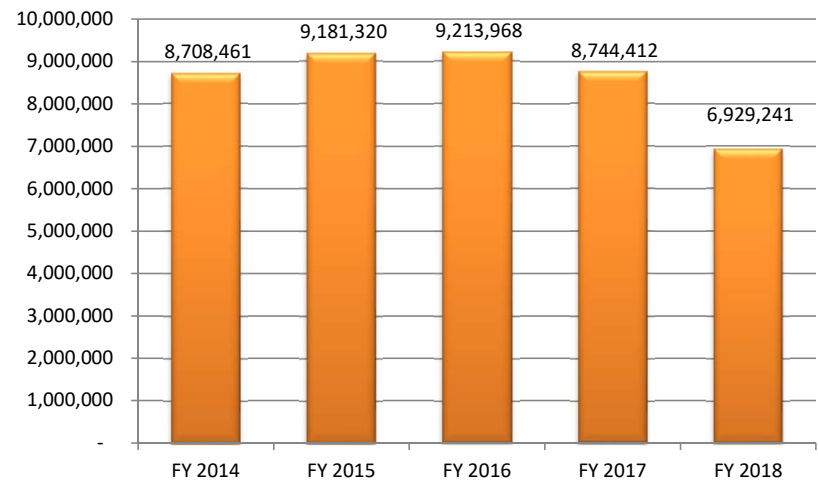
Lower Courts - Case Duration by Year



Lower Courts - FY 2018 Cases by Region



Lower Courts - Costs by Year

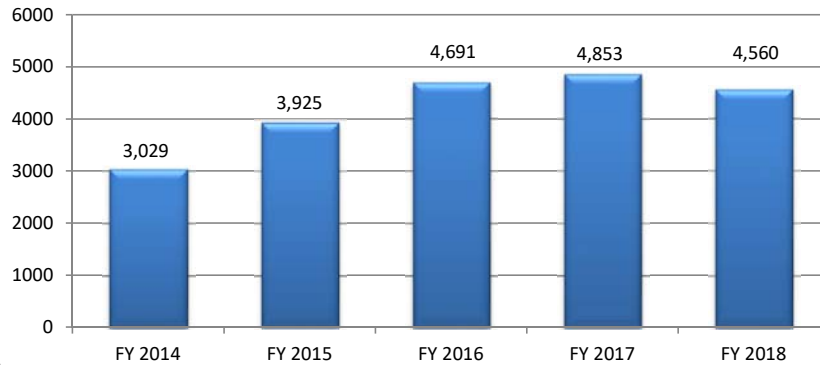


FY 2018 Avg. Cost Per Case = \$365
5 year Avg. Cost Per Case = \$416

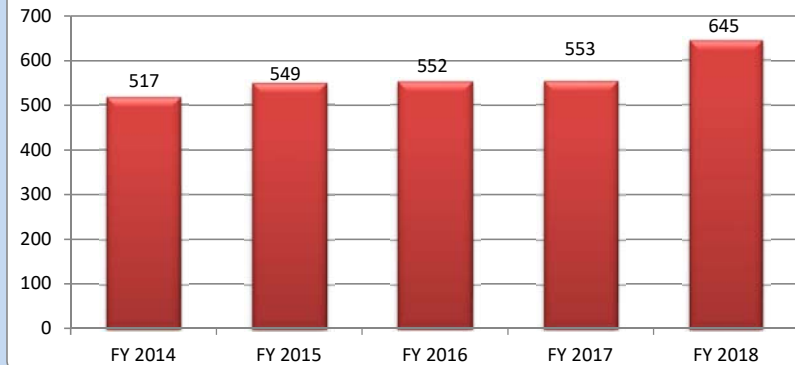


MONTANA STATE PUBLIC DEFENDER CASE TYPE SNAPSHOT: DN (DEPENDENT NEGLECT)

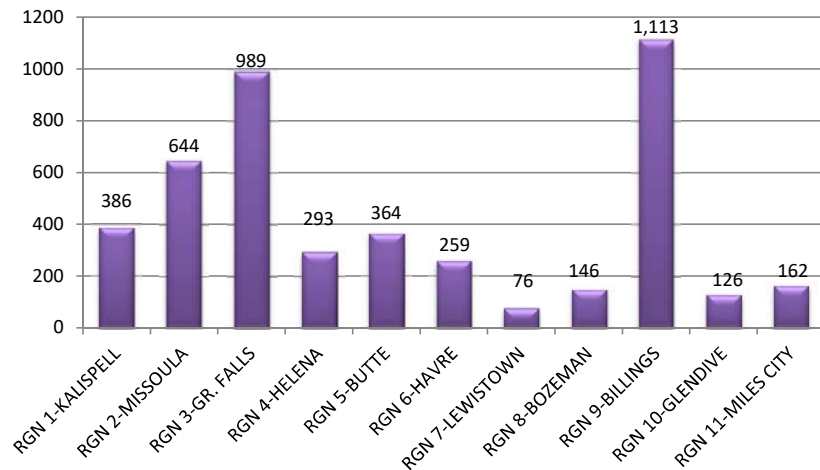
DN - Case Counts by Year



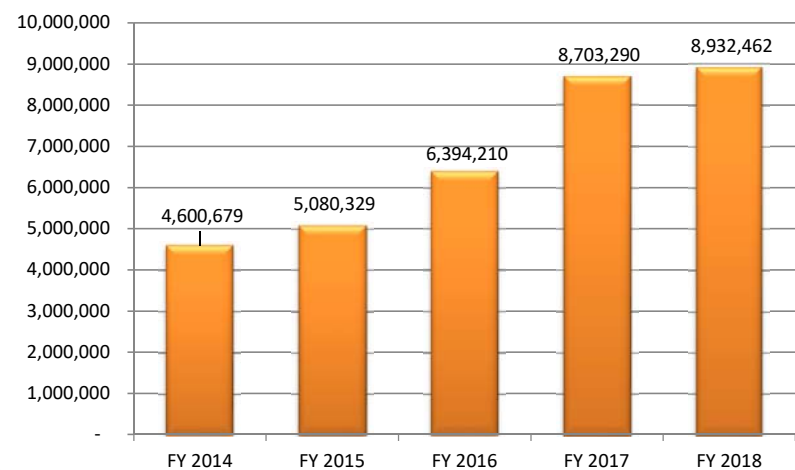
DN - Case Duration by Year



DN - FY 2018 Cases by Region



DN - Costs by Year

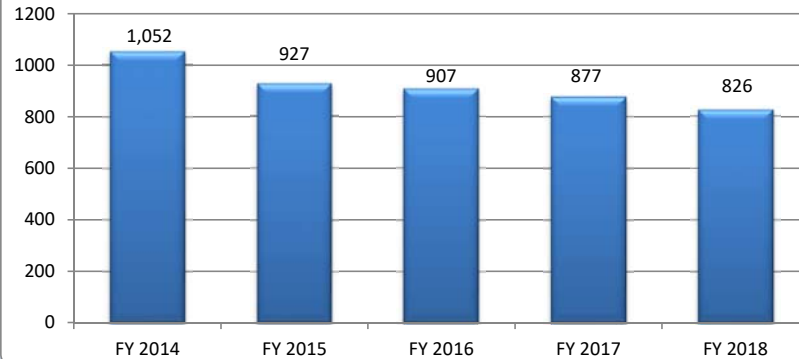


FY 2018 Avg. Cost Per Case = \$1,970
5 year Avg. Cost Per Case = \$1,588

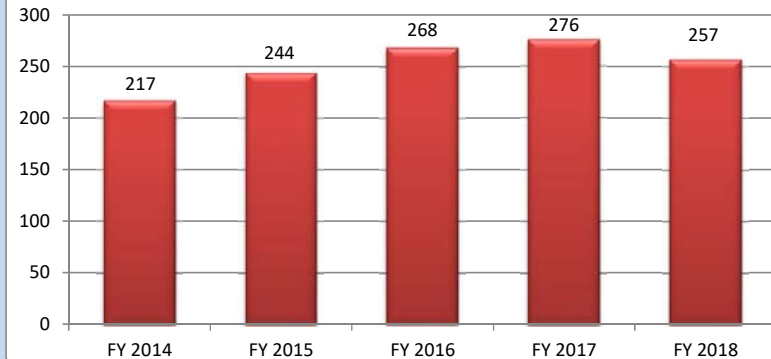


MONTANA STATE PUBLIC DEFENDER CASE TYPE SNAPSHOT: DJ (JUVENILE)

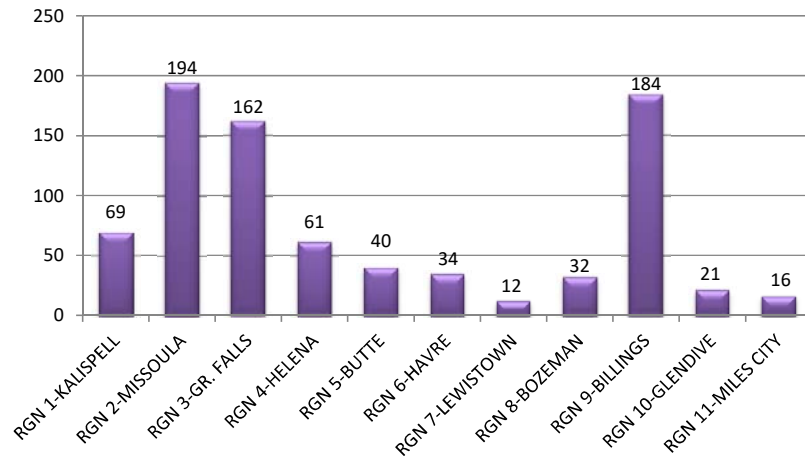
DJ - Case Counts by Year



DJ - Case Duration by Year



DJ - FY 2018 Cases by Region



DJ - Costs by Year

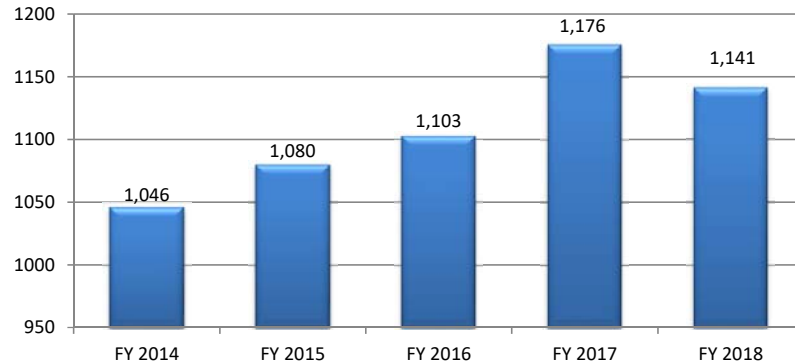


FY 2018 Avg. Cost Per Case = \$1,060
5 year Avg. Cost Per Case = \$1,093

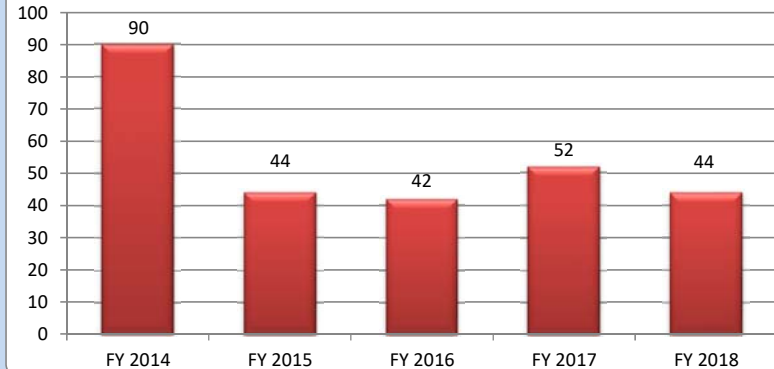


MONTANA STATE PUBLIC DEFENDER CASE TYPE SNAPSHOT: DI (INVOLUNTARY COMMITMENT)

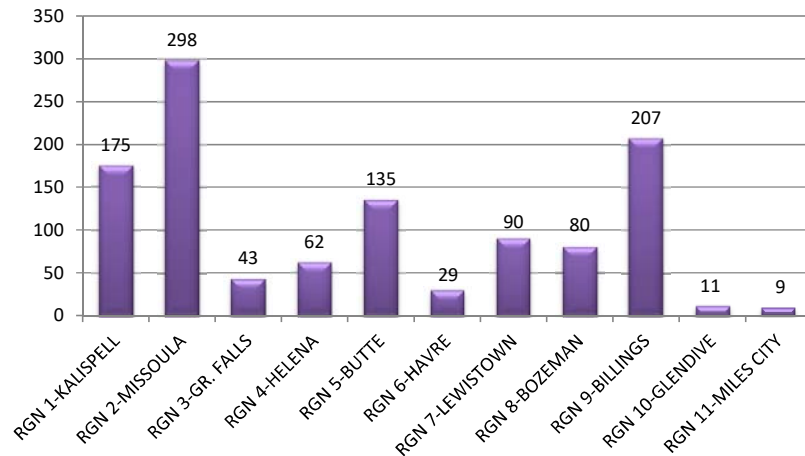
DI - Case Counts by Year



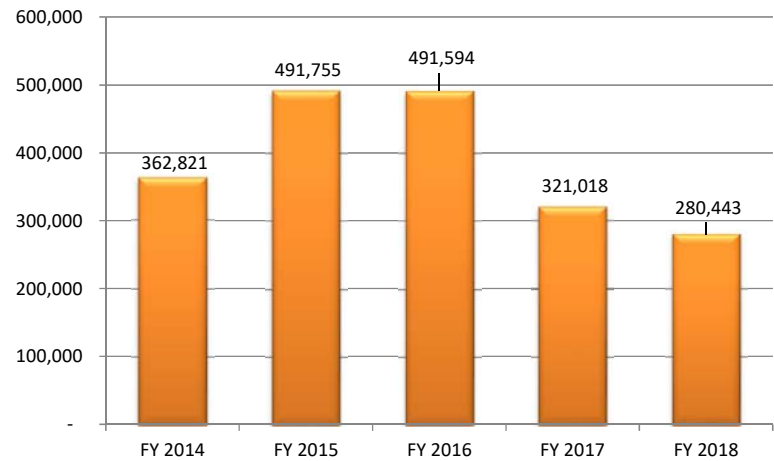
DI - Case Duration by Year



DI - FY 2018 Cases by Region



DI - Costs by Year

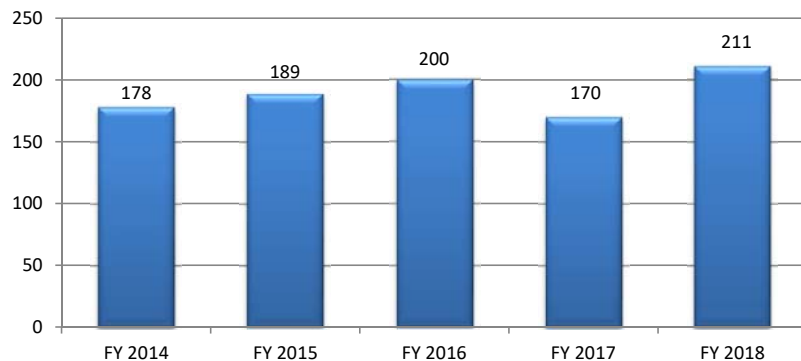


FY 2018 Avg. Cost Per Case = \$253
5 year Avg. Cost Per Case = \$355

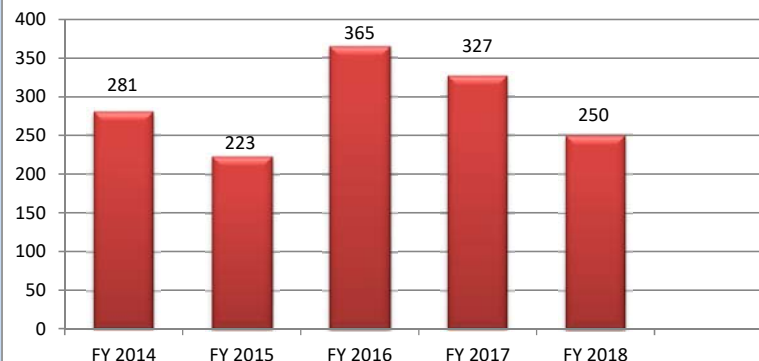


MONTANA STATE PUBLIC DEFENDER CASE TYPE SNAPSHOT: DG (GUARDIANSHIP)

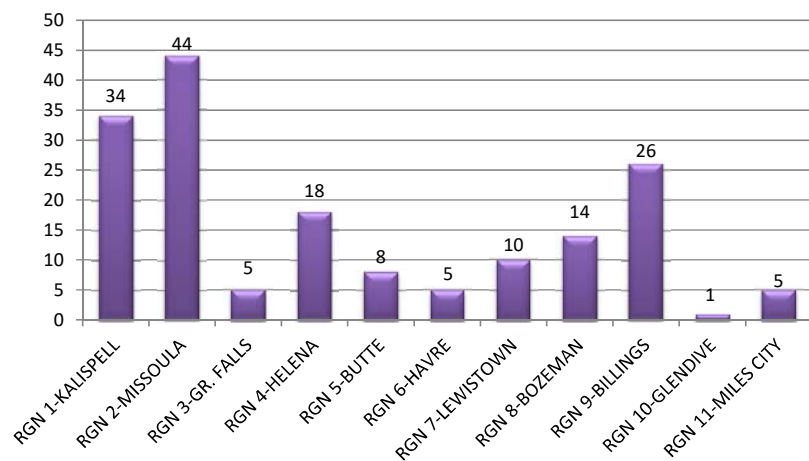
DG - Case Counts by Year



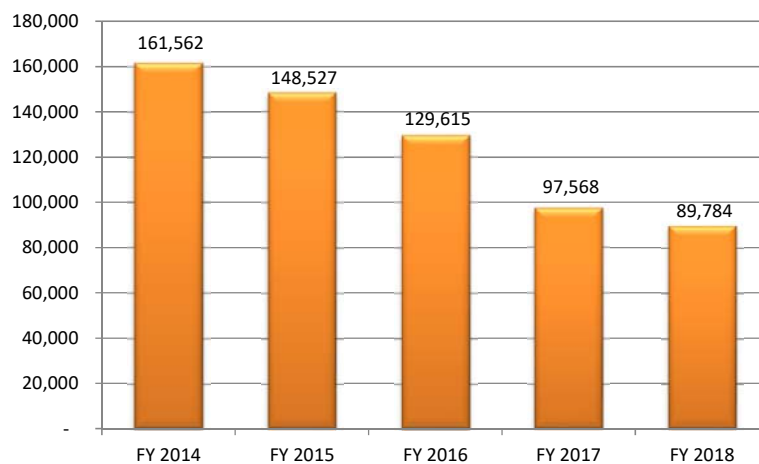
DG - Case Duration by Year



DG - FY 2018 Cases by Region



DG - Costs by Year

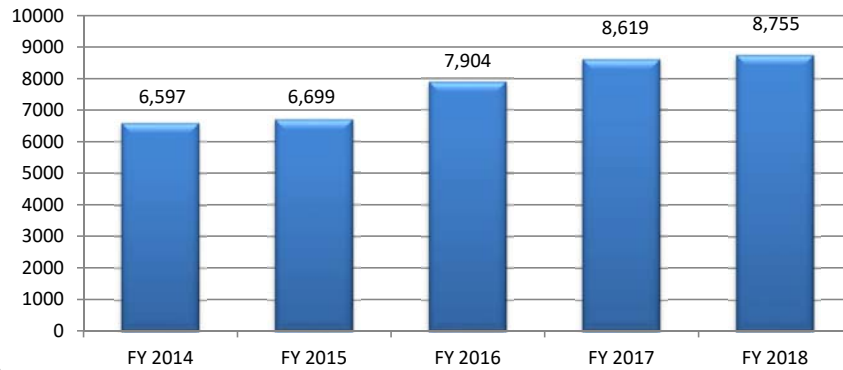


FY 2018 Avg. Cost Per Case = \$528
5 year Avg. Cost Per Case = \$689

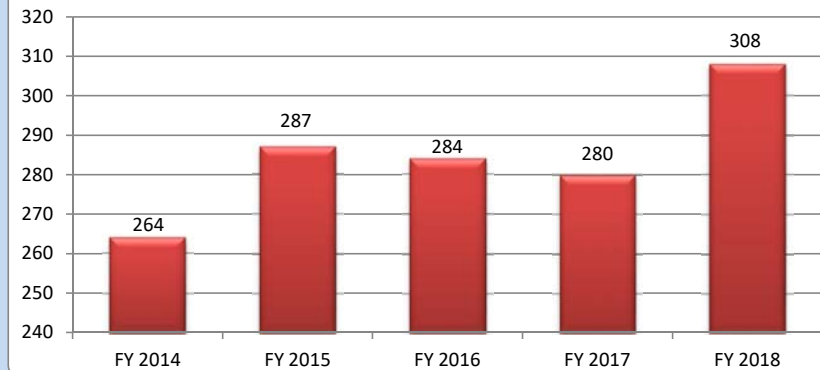


MONTANA STATE PUBLIC DEFENDER CASE TYPE SNAPSHOT: DC (CRIMINAL)

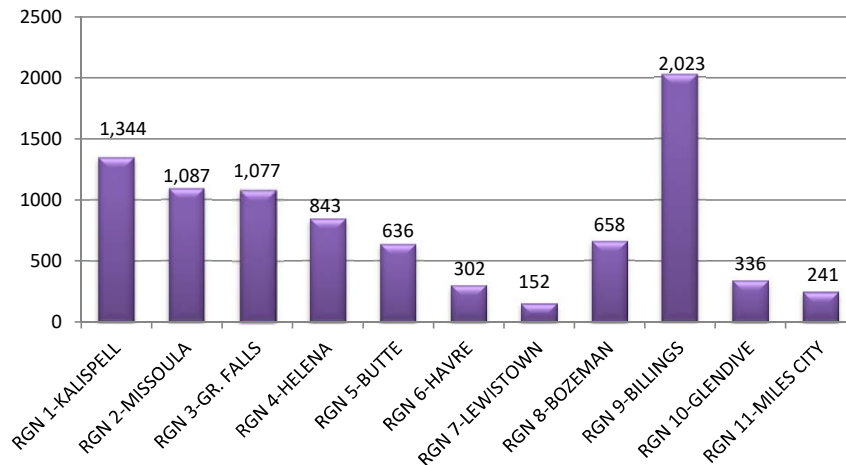
DC - Case Counts by Year



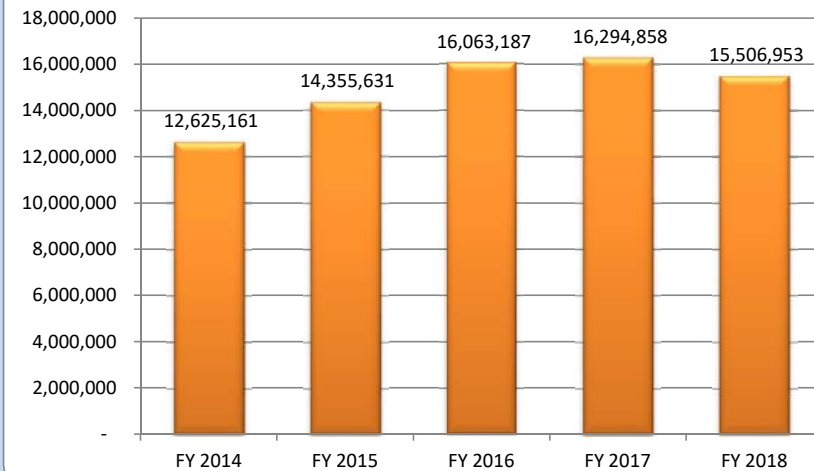
DC - Case Duration by Year



DC - FY 2018 Cases by Region



DC - Costs by Year



FY 2018 Avg. Cost Per Case = \$1,752
5 year Avg. Cost Per Case = \$1,946



MONTANA STATE PUBLIC DEFENDER
 Director's Report to the Governor,
 Supreme Court and Legislature
 New Cases Assigned FY 2018 - Division 1 and 3
 [47-1-125 (vi)]

	Criminal	Guardianship	Involuntary Commitment	Juvenile	Neglect	All Limited Jurisdiction	Grand Total
Region 1 - Kalispell	1,344	40	175	69	386	2,987	5,001
Region 2 - Missoula	1,087	31	297	193	643	3,600	5,851
Region 3 - Great Falls	1,077	3	39	158	985	1,870	4,132
Region 4 - Helena	843	6	60	59	293	1,519	2,780
Region 5 - Butte	636	11	132	40	364	1,282	2,465
Region 6 - Havre	302	12	23	27	252	679	1,295
Region 7 - Lewistown	152	3	85	9	74	191	514
Region 8 - Bozeman	658	5	78	32	146	1,843	2,762
Region 9 - Billings	2,023	39	204	181	1,110	4,430	7,987
Region 10 - Glendive	336	2	11	21	126	307	803
Region 11 - Miles City	241	18	3	10	156	259	687
Sentence Review	151						151
Grand Total	8,850	170	1,107	799	4,535	18,967	34,428



MONTANA STATE PUBLIC DEFENDER
 Director's Report to the Governor,
 Supreme Court and Legislature
 New Cases Assigned FY 2018 - Division 1 and 3
 [47-1-125 (vi)]

Region	County	City	Court Type	Criminal	Guardianship	Involuntary Commitment	Juvenile	Neglect	All Limited Jurisdiction	Grand Total
Region 1 - Kalispell	Flathead	Columbia Falls	City						162	162
		Kalispell	District	644	21	141	45	265		1,116
			Justice						916	916
			City						765	765
		Whitefish	City						124	124
	Lake	Polson	District	466	12	19	18	57		572
			Justice						479	479
			City						95	95
		Ronan	City						34	34
		Saint Ignatius	City						4	4
	Lincoln	Eureka	City						21	21
		Libby	District	179	1	11	3	52		246
			Justice						125	125
			City						91	91
		Troy	City						20	20
	Sanders	Hot Springs	City						5	5
		Plains	City						17	17
		Thompson Falls	District	55	6	4	3	12		80
			Justice						93	93
City								36	36	
Grand Total				1,344	40	175	69	386	2,987	5,001



MONTANA STATE PUBLIC DEFENDER
 Director's Report to the Governor,
 Supreme Court and Legislature
 New Cases Assigned FY 2018 - Division 1 and 3
 [47-1-125 (vi)]

Region	County	City	Court Type	Criminal	Guardianship	Involuntary Commitment	Juvenile	Neglect	All Limited Jurisdiction	Grand Total	
Region 2 - Missoula	Mineral	Alberton	City						2	2	
		Superior	District	66		2	4	26		98	
			Justice						79	79	
			City						3	3	
	Missoula	Missoula	District	750	23	271	137	456		1,637	
			Justice						768	768	
			City						2,083	2,083	
	Ravalli	Darby	City						27	27	
		Hamilton	District	271	8	24	52	161		516	
			Justice							479	479
			City							141	141
		Stevensville	City							18	18
Grand Total				1,087	31	297	193	643	3,600	5,851	



MONTANA STATE PUBLIC DEFENDER
 Director's Report to the Governor,
 Supreme Court and Legislature
 New Cases Assigned FY 2018 - Division 1 and 3
 [47-1-125 (vi)]

Region	County	City	Court Type	Criminal	Guardianship	Involuntary Commitment	Juvenile	Neglect	All Limited Jurisdiction	Grand Total
Region 3 - Great Falls	Cascade	Great Falls	District	922	2	29	145	913		2,011
			Justice						373	373
			City						1,244	1,244
	Glacier	Cut Bank	District	69		7	4	23		103
			Justice						32	32
			City						125	125
	Pondera	Conrad	District	15		1	3	20		39
			Justice						23	23
			City						15	15
	Teton	Choteau	District	27		1	3	12		43
			Justice						18	18
	Toole	Shelby	District	43	1	1	3	17		65
			Justice	1					24	25
			City						16	16
Grand Total				1,077	3	39	158	985	1,870	4,132



MONTANA STATE PUBLIC DEFENDER
 Director's Report to the Governor,
 Supreme Court and Legislature
 New Cases Assigned FY 2018 - Division 1 and 3
 [47-1-125 (vi)]

Region	County	City	Court Type	Criminal	Guardianship	Involuntary Commitment	Juvenile	Neglect	All Limited Jurisdiction	Grand Total	
Region 4 - Helena	Broadwater	Townsend	District	41	1	7	2	24		75	
			Justice							43	43
			City							37	37
	Jefferson	Boulder	District	55	1	5	2			63	
			Justice							41	41
			City							9	9
		Whitehall	City							12	12
	Lewis And Clark	East Helena	City							20	20
		Helena	District	747	4	48	55	269		1,123	
			Justice							471	471
City									886	886	
Grand Total				843	6	60	59	293	1,519	2,780	



MONTANA STATE PUBLIC DEFENDER
 Director's Report to the Governor,
 Supreme Court and Legislature
 New Cases Assigned FY 2018 - Division 1 and 3
 [47-1-125 (vi)]

Region	County	City	Court Type	Criminal	Guardianship	Involuntary Commitment	Juvenile	Neglect	All Limited Jurisdiction	Grand Total
Region 5 - Butte	Beaverhead	Dillon	District	24	1	12	8	61		106
			Justice						53	53
			City						43	43
	Deer Lodge	Anaconda	District	141	3	23	9	15		191
			Justice						199	199
	Granite	Philipsburg	District	15		2	1			18
			Justice						31	31
	Madison	Ennis	City						7	7
		Virginia City	District	12	1			16		29
			Justice						87	87
	Powell	Deer Lodge	District	121	6	7	1	29		164
			Justice						40	40
			City						37	37
Grand Total	Silver Bow	Butte	District	323		88	21	243		675
			Justice						196	196
			City						589	589



MONTANA STATE PUBLIC DEFENDER
 Director's Report to the Governor,
 Supreme Court and Legislature
 New Cases Assigned FY 2018 - Division 1 and 3
 [47-1-125 (vi)]

Region	County	City	Court Type	Criminal	Guardianship	Involuntary Commitment	Juvenile	Neglect	All Limited Jurisdiction	Grand Total
Region 6 - Havre	Blaine	Chinook	District	31	1	2	2	39		75
			Justice						27	27
			City						5	5
		Harlem	City						5	5
	Chouteau	Fort Benton	District	13	1	1	1	21		37
			Justice						11	11
			City						8	8
	Hill	Havre	District	180	2	11	19	134		346
			Justice						251	251
			City						267	267
	Liberty	Chester	District	6	1	1				8
			Justice						10	10
	Phillips	Malta	District	21	2	2	1	18		44
			Justice						18	18
			City						15	15
	Valley	Glasgow	District	51	5	6	4	40		106
			Justice						33	33
			City						29	29
Grand Total				302	12	23	27	252	679	1,295



MONTANA STATE PUBLIC DEFENDER
 Director's Report to the Governor,
 Supreme Court and Legislature
 New Cases Assigned FY 2018 - Division 1 and 3
 [47-1-125 (vi)]

Region	County	City	Court Type	Criminal	Guardianship	Involuntary Commitment	Juvenile	Neglect	All Limited Jurisdiction	Grand Total
Region 7 - Lewistown	Fergus	Lewistown	District	65	3	84	7	54		213
			Justice						33	33
			City						65	65
	Golden Valley	Ryegate	District	4						4
			Justice						11	11
	Judith Basin	Stanford	District	16		1				17
			Justice						20	20
	Meagher	White Sulphur Springs	District	5						5
			Justice						8	8
	Musselshell	Roundup	District	48			2	12		62
			Justice						27	27
			City						20	20
Grand Total	Petroleum	Winnett	District	2				2		4
			Justice						3	3
	Wheatland	Harlowton	District	12				6		18
			Justice						2	2
			City						2	2



MONTANA STATE PUBLIC DEFENDER
 Director's Report to the Governor,
 Supreme Court and Legislature
 New Cases Assigned FY 2018 - Division 1 and 3
 [47-1-125 (vi)]

Region	County	City	Court Type	Criminal	Guardianship	Involuntary Commitment	Juvenile	Neglect	All Limited Jurisdiction	Grand Total
Region 8 - Bozeman	Gallatin	Belgrade	City						174	174
		Bozeman	District	479	5	67	28	133		712
			Justice						624	624
			City						728	728
		Manhattan	City						17	17
		Three Forks	City						2	2
		West Yellowst..	City						31	31
	Park	Livingston	District	160		11	2	7		180
			Justice						126	126
			City						104	104
	Sweet Grass	Big Timber	District	19			2	6		27
			Justice						22	22
			City						15	15
Grand Total				658	5	78	32	146	1,843	2,762



MONTANA STATE PUBLIC DEFENDER
 Director's Report to the Governor,
 Supreme Court and Legislature
 New Cases Assigned FY 2018 - Division 1 and 3
 [47-1-125 (vi)]

Region	County	City	Court Type	Criminal	Guardianship	Involuntary Commitment	Juvenile	Neglect	All Limited Jurisdiction	Grand Total
Region 9 - Billings	Big Horn	Hardin	District	117		2	9	63		191
			Justice						64	64
			City						131	131
	Carbon	Bridger	City						1	1
		Fromberg	City						2	2
		Joliet	City						2	2
		Red Lodge	District	52	1	3		18		74
			Justice						44	44
			City						30	30
	Stillwater	Columbus	District	39	1	2	4	1		47
			Justice						40	40
			City						21	21
	Yellowstone	Billings	District	1,815	37	197	168	1,028		3,245
			Justice						925	925
			City						3,070	3,070
		Laurel	City						100	100
Grand Total			2,023	39	204	181	1,110	4,430	7,987	



MONTANA STATE PUBLIC DEFENDER
Director's Report to the Governor,
Supreme Court and Legislature
New Cases Assigned FY 2018 - Division 1 and 3
[47-1-125 (vi)]

Region	County	City	Court Type	Criminal	Guardianship	Involuntary Commitment	Juvenile	Neglect	All Limited Jurisdiction	Grand Total
Region 10 - Glendive	Daniels	Scobey	District	1				15		16
			City						1	1
	Dawson	Glendive	District	135	1	7	9	52		204
			Justice						39	39
			City						62	62
	McCone	Circle	District	8			2	5		15
			Justice						4	4
	Prairie	Terry	District	4				3		7
			Justice						6	6
	Richland	Fairview	City						5	5
		Sidney	District	143		4	4	28		179
			Justice						49	49
			City						88	88
	Roosevelt	Culbertson	City						6	6
		Wolf Point	District	31			3			34
			Justice						26	26
			City						1	1
	Sheridan	Plentywood	District	13	1		1	23		38
			Justice						7	7
			City						13	13
	Wibaux	Wibaux	District	1			2			3
Grand Total				336	2	11	21	126	307	803



MONTANA STATE PUBLIC DEFENDER
 Director's Report to the Governor,
 Supreme Court and Legislature
 New Cases Assigned FY 2018 - Division 1 and 3
 [47-1-125 (vi)]

Region	County	City	Court Type	Criminal	Guardianship	Involuntary Commitment	Juvenile	Neglect	All Limited Jurisdiction	Grand Total
Region 11 - Miles City	Carter	Ekalaka	District	1						1
			Justice						2	2
	Custer	Miles City	District	151	15	3	2	133		304
			Justice						15	15
			City						116	116
	Fallon	Baker	District	22	1		4	10		37
			Justice						21	21
			City						9	9
	Garfield	Jordan	District	2						2
	Powder River	Broadus	District	13				3		16
			Justice						5	5
	Rosebud	Colstrip	City						27	27
			District	52	2		4	10		68
		Forsyth	Justice						53	53
			City						6	6
	Treasure	Hysham	Justice						5	5
Grand Total				241	18	3	10	156	259	687



MONTANA STATE PUBLIC DEFENDER
 Director's Report to the Governor,
 Supreme Court and Legislature FY 2018
 Expenditure Data - Division 1 and 3
 47-1-125 (xi)

	Criminal	Guardianship	Involuntary Commitment	Juvenile	Neglect	All Limited Jurisdiction	Grand Total
Region 1 - Kalispell	2,234,537	14,286	38,237	84,426	938,786	968,325	\$4,278,597
Region 2 - Missoula	2,246,925	22,822	107,216	172,699	2,162,096	1,386,421	\$6,098,180
Region 3 - Great Falls	1,828,780	1,185	8,673	154,142	1,086,602	518,210	\$3,597,593
Region 4 - Helena	1,617,979	2,075	16,526	61,254	918,128	493,339	\$3,109,300
Region 5 - Butte	1,262,662	6,871	30,938	36,271	742,961	612,708	\$2,692,410
Region 6 - Havre	705,612	3,868	3,922	42,125	372,524	334,258	\$1,462,310
Region 7 - Lewistown	312,937	1,485	15,946	27,121	106,693	100,420	\$564,602
Region 8 - Bozeman	1,324,546	7,261	23,477	50,292	391,196	873,128	\$2,669,901
Region 9 - Billings	2,853,619	25,017	32,125	122,831	1,730,082	1,278,548	\$6,042,221
Region 10 - Glendive	704,430	1,052	2,149	26,668	200,672	237,551	\$1,172,522
Region 11 - Miles City	414,925	3,862	1,234	17,493	282,722	126,332	\$846,567
Grand Total	\$15,506,953	\$89,784	\$280,443	\$795,321	\$8,932,462	\$6,929,241	\$32,534,203

Notes:

Additional costs for capital cases in the amount of \$539,809 are not included in any Division's reporting.

Appellate Defender Division conflict-related expenditures of \$139,278 and non-conflict expenditures of \$1,957,500 are excluded from this report.



MONTANA STATE PUBLIC DEFENDER
Director's Report to the Governor,
Supreme Court and Legislature FY 2018
Expenditure Data by Court - Division 1 and 3
47-1-125 (xi)

				Criminal	Guardianship	Involuntary Commitment	Juvenile	Neglect	All Limited Jurisdiction	Grand Total	
Region 1 - Kalispell	Flathead	Columbia Falls	City							53,401	\$53,401
		Kalispell	City							162,085	\$162,085
			District	968,926	1,780	30,919	46,384	598,945		\$1,646,954	
			Justice							286,186	\$286,186
		Whitefish	City							30,961	\$30,961
	Lake	Polson	City							29,229	\$29,229
			District	831,645	3,806	4,591	29,984	233,012		\$1,103,038	
			Justice							181,936	\$181,936
			Ronan	City							19,125
		Saint Ignatius	City							190	\$190
	Lincoln	Eureka	City							10,740	\$10,740
		Libby	City							34,838	\$34,838
			District	333,099		2,164	4,803	85,247		\$425,313	
			Justice							115,142	\$115,142
		Troy	City							7,856	\$7,856
	Sanders	Hot Springs	City							788	\$788
		Plains	City							5,209	\$5,209
		Thompson Falls	City							8,720	\$8,720
			District	100,868	8,700	562	3,255	21,582		\$134,967	
			Justice							21,918	\$21,918
Grand Total				\$2,234,537	\$14,286	\$38,237	\$84,426	\$938,786	\$968,325	\$4,278,597	



MONTANA STATE PUBLIC DEFENDER
 Director's Report to the Governor,
 Supreme Court and Legislature FY 2018
 Expenditure Data by Court - Division 1 and 3
 47-1-125 (xi)

				Criminal	Guardianship	Involuntary Commitment	Juvenile	Neglect	All Limited Jurisdiction	Grand Total
Region 2 - Missoula	Mineral	Alberton	City	1,035						\$1,035
		Superior	City	426						\$426
			District	131,096		125	2,940	86,908		\$221,069
			Justice	19,974						\$19,974
	Missoula	Missoula	City	745,911						\$745,911
			District	1,643,780	21,552	102,808	113,725	1,813,793		\$3,695,659
			Justice	399,336						\$399,336
	Ravalli	Darby	City	13,537						\$13,537
		Hamilton	City	42,556						\$42,556
			District	472,048	1,270	4,283	56,034	261,396		\$795,031
			Justice	154,196						\$154,196
		Stevensville	City	9,451						\$9,451
Grand Total				\$2,246,925	\$22,822	\$107,216	\$172,699	\$2,162,096	\$1,386,421	\$6,098,180



MONTANA STATE PUBLIC DEFENDER
Director's Report to the Governor,
Supreme Court and Legislature FY 2018
Expenditure Data by Court - Division 1 and 3
47-1-125 (xi)

				Criminal	Guardianship	Involuntary Commitment	Juvenile	Neglect	All Limited Jurisdiction	Grand Total
Region 3 - Great Falls	Cascade	Great Falls	City						279,480	\$279,480
			District	1,634,097	1,160	7,822	149,255	865,294		\$2,657,628
			Justice						112,409	\$112,409
	Glacier	Cut Bank	City						71,633	\$71,633
			District	97,068		835	108	103,738		\$201,749
			Justice						18,835	\$18,835
	Pondera	Conrad	City						2,918	\$2,918
			District	19,709			647	58,351		\$78,708
			Justice						10,896	\$10,896
	Teton	Choteau	District	39,595			3,130	7,034		\$49,760
			Justice						3,110	\$3,110
	Toole	Shelby	City						7,251	\$7,251
			District	38,311	24	16	1,001	52,184		\$91,537
			Justice						11,677	\$11,677
Grand Total				\$1,828,780	\$1,185	\$8,673	\$154,142	\$1,086,602	\$518,210	\$3,597,593



MONTANA STATE PUBLIC DEFENDER
 Director's Report to the Governor,
 Supreme Court and Legislature FY 2018
 Expenditure Data by Court - Division 1 and 3
 47-1-125 (xi)

				Criminal	Guardianship	Involuntary Commitment	Juvenile	Neglect	All Limited Jurisdiction	Grand Total	
Region 4 - Helena	Broadwater	Townsend	City	8,894						\$8,894	
			District	127,438	49	5,479	7,299	59,776	\$200,041		
			Justice	20,810						\$20,810	
	Jefferson	Boulder	City	10,524						\$10,524	
			District	98,473	324	1,707	5,429	45,294	\$151,227		
			Justice	12,701						\$12,701	
	Lewis And Clark	Whitehall	City	7,900						\$7,900	
		East Helena	City	4,721						\$4,721	
			Helena	City	230,819						\$230,819
				District	1,392,068	1,702	9,340	48,525	813,057	\$2,264,693	
				Justice	196,970						\$196,970
Grand Total				\$1,617,979	\$2,075	\$16,526	\$61,254	\$918,128	\$493,339	\$3,109,300	



MONTANA STATE PUBLIC DEFENDER
Director's Report to the Governor,
Supreme Court and Legislature FY 2018
Expenditure Data by Court - Division 1 and 3
47-1-125 (xi)

				Criminal	Guardianship	Involuntary Commitment	Juvenile	Neglect	All Limited Jurisdiction	Grand Total	
Region 5 - Butte	Beaverhead	Dillon	City							15,556	\$15,556
			District	104,689	13	4,451	10,172	165,950		\$285,276	
			Justice							39,614	\$39,614
	Deer Lodge	Anaconda	District	270,614	2,130	5,246	13,611	117,888		\$409,489	
			Justice							93,284	\$93,284
	Granite	Philipsburg	City							32,340	\$32,340
			District	18,033		860	1,337	1,240		\$21,470	
			Justice							13,502	\$13,502
	Madison	Ennis	City							2,549	\$2,549
		Virginia City	District	30,686	598		529	52,656		\$84,469	
			Justice							50,736	\$50,736
	Powell	Deer Lodge	City							18,841	\$18,841
			District	243,351	4,043	3,202	888	104,954		\$356,438	
			Justice							21,571	\$21,571
	Silver Bow	Butte	City							160,072	\$160,072
			District	595,290	86	17,179	9,733	300,273		\$922,561	
			Justice							164,643	\$164,643
Grand Total				\$1,262,662	\$6,871	\$30,938	\$36,271	\$742,961	\$612,708	\$2,692,410	



MONTANA STATE PUBLIC DEFENDER
 Director's Report to the Governor,
 Supreme Court and Legislature FY 2018
 Expenditure Data by Court - Division 1 and 3
 47-1-125 (xi)

				Criminal	Guardianship	Involuntary Commitment	Juvenile	Neglect	All Limited Jurisdiction	Grand Total		
Region 6 - Havre	Blaine	Chinook	City							669	\$669	
			District	89,967	870	348	5,473	68,923		\$165,581		
			Justice							10,335	\$10,335	
		Harlem	City							973	\$973	
	Chouteau		Fort Benton	City							2,619	\$2,619
				District	16,567	212	575	359	3,701		\$21,414	
		Justice								6,031	\$6,031	
	Hill	Havre	City							163,420	\$163,420	
			District	434,839	1,191	2,507	33,738	239,821		\$712,096		
			Justice							107,598	\$107,598	
	Liberty	Chester	District	31,194	272		15	53		\$31,535		
			Justice							3,270	\$3,270	
	Phillips	Malta	City							1,533	\$1,533	
			District	9,127	123			21,413		\$30,662		
			Justice							8,593	\$8,593	
	Valley	Glasgow	City							15,123	\$15,123	
			District	123,919	1,199	492	2,540	38,613		\$166,764		
Justice									14,095	\$14,095		
Grand Total				\$705,612	\$3,868	\$3,922	\$42,125	\$372,524	\$334,258	\$1,462,310		



MONTANA STATE PUBLIC DEFENDER
Director's Report to the Governor,
Supreme Court and Legislature FY 2018
Expenditure Data by Court - Division 1 and 3
47-1-125 (xi)

				Criminal	Guardianship	Involuntary Commitment	Juvenile	Neglect	All Limited Jurisdiction	Grand Total	
Region 7 - Lewistown	Fergus	Lewistown	City						23,599	\$23,599	
			District	166,279	995	15,129	26,082	57,544		\$266,029	
			Justice						31,129	\$31,129	
	Golden Valley	Ryegate	District	8,638				136	13,100		\$21,874
			Justice						2,437	\$2,437	
	Judith Basin	Stanford	District	18,028				681	3,034		\$21,743
			Justice						16,634	\$16,634	
	Meagher	White Sulphur Springs	City						1,510	\$1,510	
			District	7,893				209			\$8,102
			Justice						1,361	\$1,361	
	Musselshell	Roundup	City						7,711	\$7,711	
			District	94,854	490			830	28,610		\$124,784
			Justice						14,039	\$14,039	
	Petroleum	Winnett	District	1,454					1,744		\$3,199
			Justice						1,163	\$1,163	
	Wheatland	Harlowton	City						543	\$543	
			District	15,791					2,661		\$18,452
			Justice						294	\$294	
Grand Total				\$312,937	\$1,485	\$15,946	\$27,121	\$106,693	\$100,420	\$564,602	



MONTANA STATE PUBLIC DEFENDER
 Director's Report to the Governor,
 Supreme Court and Legislature FY 2018
 Expenditure Data by Court - Division 1 and 3
 47-1-125 (xi)

				Criminal	Guardianship	Involuntary Commitment	Juvenile	Neglect	All Limited Jurisdiction	Grand Total	
Region 8 - Bozeman	Gallatin	Belgrade	City							114,911	\$114,911
		Bozeman	City							323,611	\$323,611
			District	1,029,504	7,261	21,021	45,570	359,011		\$1,462,368	
			Justice							306,738	\$306,738
		Manhattan	City							6,428	\$6,428
		Three Forks	City							1,081	\$1,081
		West Yellowstone	City							8,756	\$8,756
	Park	Livingston	City							48,318	\$48,318
			District	244,960		2,456	3,308	29,591		\$280,314	
			Justice							47,718	\$47,718
	Sweet Grass	Big Timber	City							3,205	\$3,205
			District	50,082			1,414	2,594		\$54,091	
			Justice							12,362	\$12,362
Grand Total				\$1,324,546	\$7,261	\$23,477	\$50,292	\$391,196	\$873,128	\$2,669,901	



MONTANA STATE PUBLIC DEFENDER
 Director's Report to the Governor,
 Supreme Court and Legislature FY 2018
 Expenditure Data by Court - Division 1 and 3
 47-1-125 (xi)

				Criminal	Guardianship	Involuntary Commitment	Juvenile	Neglect	All Limited Jurisdiction	Grand Total	
Region 9 - Billings	Big Horn	Hardin	City						26,908	\$26,908	
			District	153,561				224	2,175	66,877	\$222,837
			Justice						7,395	\$7,395	
	Carbon	Bridger	City						2,335	\$2,335	
			Fromberg	City						1,722	\$1,722
		Joliet	City						199	\$199	
			Red Lodge	City						20,402	\$20,402
		District		44,221	954	928	3,817	43,732	\$93,653		
		Justice							28,749	\$28,749	
		Stillwater	Columbus	City						12,513	\$12,513
	District			71,069	406	632	14,530	15,401	\$102,039		
	Justice								11,703	\$11,703	
	Yellowstone	Billings	City						787,222	\$787,222	
			District	2,584,767	23,657	30,340	102,308	1,604,072	\$4,345,144		
			Justice						319,192	\$319,192	
		Laurel	City						60,209	\$60,209	
Grand Total				\$2,853,619	\$25,017	\$32,125	\$122,831	\$1,730,082	\$1,278,548	\$6,042,221	



MONTANA STATE PUBLIC DEFENDER
Director's Report to the Governor,
Supreme Court and Legislature FY 2018
Expenditure Data by Court - Division 1 and 3
47-1-125 (xi)

				Criminal	Guardianship	Involuntary Commitment	Juvenile	Neglect	All Limited Jurisdiction	Grand Total
Region 10 - Glendive	Daniels Scobey	City							209	\$209
		District		2,337				7,505		\$9,842
	Dawson Glendive	City							66,646	\$66,646
		District		291,234	645	2,149	10,864	64,668		\$369,559
		Justice							25,956	\$25,956
	McCone Circle	District		8,310			4,491	7,280		\$20,081
		Justice							1,779	\$1,779
	Prairie Terry	City							12	\$12
		District		3,104				10,450		\$13,554
		Justice							2,479	\$2,479
	Richland Fairview Sidney	City							4,981	\$4,981
		City							69,361	\$69,361
		District		295,846			6,490	60,330		\$362,665
		Justice							50,706	\$50,706
	Roosevelt Culbertson Wolf Point	City							2,354	\$2,354
		City							175	\$175
		District		37,506			1,664	10,319		\$49,490
		Justice							6,588	\$6,588
	Sheridan Plentywood	City							2,682	\$2,682
		District		65,562	407		806	40,121		\$106,895
		Justice							3,624	\$3,624
	Wibaux Wibaux	District		530			2,353			\$2,883
Grand Total				\$704,430	\$1,052	\$2,149	\$26,668	\$200,672	\$237,551	\$1,172,522



MONTANA STATE PUBLIC DEFENDER
 Director's Report to the Governor,
 Supreme Court and Legislature FY 2018
 Expenditure Data by Court - Division 1 and 3
 47-1-125 (xi)

				Criminal	Guardianship	Involuntary Commitment	Juvenile	Neglect	All Limited Jurisdiction	Grand Total
Region 11 - Miles City	Carter	Ekalaka	District	17,281				716		\$17,997
			Justice						2,825	\$2,825
	Custer	Miles City	City						48,265	\$48,265
			District	266,762	3,269	1,234	1,389	165,680		\$438,332
			Justice						6,450	\$6,450
	Fallon	Baker	City						4,962	\$4,962
			District	43,077	326		14,480	15,434		\$73,316
			Justice						10,401	\$10,401
	Garfield	Jordan	District	3,952						\$3,952
	Powder River	Broadus	District	7,519	93			10,039		\$17,650
			Justice						1,462	\$1,462
	Rosebud	Colstrip	City						4,509	\$4,509
			Forsyth	City						7,107
			District	76,336	174		1,625	74,792		\$152,927
			Justice						39,407	\$39,407
	Treasure	Hysham	City						494	\$494
			District					16,060		\$16,060
			Justice						451	\$451
Grand Total				\$414,925	\$3,862	\$1,234	\$17,493	\$282,722	\$126,332	\$846,567



MONTANA STATE PUBLIC DEFENDER

44 West Park Street, Butte, MT 59701
T: 406.496.6080 F: 406.496.6098
publicdefender.mt.gov

CASE WEIGHT SYSTEM - RULES

Revised by the Labor Management Committee May 2, 2014

Effective June 1, 2014

BEST PRACTICES: how to administer and use this system

Step 1- VALUE THE CASE

Assign case hours to each case when assigned – this means DAILY, as the cases come in, then write the hours on the appointment sheet. Likewise, the hours assigned should be entered into JustWare.

Step 2- DAILY TRACKING

This system is designed to help evenly distribute cases among attorneys and to monitor how many cases each attorney receives each month. We are currently using JustWare to generate monthly reports.

Step 3- GENERATE MONTHLY JUSTWARE REPORT

Print a JustWare Report for each attorney at the end of each month.

Step 4- ATTORNEY REVIEWS MONTHLY JUSTWARE REPORT

At the close of the month distribute the reports to the attorneys. If there are questions, concerns, or changes, the attorney can write in the comment section on the form and talk to the manager about changes.

Step 5- AFTER ADJUSTMENTS, ATTORNEY AND MANAGER SIGN AND DATE MONTHLY REPORT, REPORT IS SENT TO CENTRAL OFFICE

*We provide effective professional legal services with equal access to quality
client-centered representation.*

STEP 1 – VALUE THE CASE

1. The Regional Deputy Public Defender and/or Managing Attorney will assign and track cases by attorney for the office or region. If the Regional Deputy Public Defender or Managing Attorney is absent they will appoint a backup person who will be an attorney to assign and track cases. Every region will provide the Central Office with a list of those individuals that are approved to assign and track cases including all backup personnel. **(See pages 4-7 for specifics on values.)**

STEP 2 – DAILY TRACKING

2. Cases will be assigned DAILY and entered into JustWare DAILY. This information will be reported to the Central Office within 10 calendar days after the end of each month.
3. There will be a separate JustWare Form for each attorney.
4. This case weighting system is designed to monitor case assignments rather than open cases. Therefore, there is no incentive for a staff attorney to keep cases open.
5. One case is any number of tickets or charges an individual received in a specific incident and assigned to one jurisdiction for adjudication (i.e. traffic stop results in a speeding ticket, criminal distribution of dangerous drugs and possession – if litigated in the same court – all one case).
6. **When an attorney's monthly hours reach 125, the Regional Manager or Managing Attorney must meet with the staff attorney to discuss the attorney's caseload.**
7. This tool is not a performance measure but is simply used to assess whether resources are being properly distributed and help assure that the agency is not exceeding ethical caseload limits.

STEP 3 – STEP 5 GENERATE, ATTACH, REVIEW, SIGN AND DATE

8. At the close of each month, print off the JustWare Report and distribute to every attorney. The attorney then has a chance to review the JustWare Report for errors, questions, concerns, and can write their comments on the form. Once the review is completed and adjustments are made, if any, both the attorney and manager sign the JustWare Report.
9. The JustWare Report must be sent to the Central Office within 10 calendar days after the end of each month.

Summary Report (generated by Central Office)

10. The JustWare Report will be used by Central Office to generate a summary form for each attorney. The summary form will have 12 months for each attorney and a sum of the activity for the 12 month period at the bottom of each column.

11. On the summary form for a new attorney, any month that does not have “actual information” for case assignments will have 125 hours in place of the non-existent actual information. Therefore each attorney will begin with 1500 hours (12 months times 125 hours = 1500).

12. Actual monthly hours will replace the 125 hour place holder and become part of the calculation of total annual hours.

13. This is a “rolling month” process so the most recent actual information replaces the old information and the total is recalculated.

14. New hires: Central Office will backfill the summary report with the total number of hours transferred to the attorney at 125 hours per month beginning with the current month until all cases that have been transferred are accounted for. Backfill to fill out the year with 125.

Special Circumstances

15. Warrants: If a case goes to warrant status, make no adjustments.

16. Similarly, if a case comes back from warrant status to active, make no adjustments unless the case has been re-assigned to another attorney. (Generally, these cases will most likely return to the attorney’s caseload within the year.)

17. Conflicts: If a case is conflicted out of the office after it has been assigned, subtract the appropriate hours from the attorney to whom it was assigned. (Management retains discretion to leave the hours on the original attorney’s count if the case goes to conflict at a late stage after the attorney has worked the case for some time or if the attorney has expended significant hours.)

Adjustments should be made in the month in which the transfer takes place, regardless of when the appointment was made.

18. Co-counsel: If an attorney is full co-counsel, give that attorney full hours. If the attorney is a trial-only co-counsel, give the attorney one-half of the allotted hours.

19. When a case is transferred from one attorney to another the case hours move with the case (subtract from the original attorney, add to the new attorney). Adjustments should be made in the month in which the transfer takes place.

CASE WEIGHT HOURS

Misdemeanor (Including Juvenile Cases):

2.5 hours

-Fugitive / Out of County warrants

3 hours

-ALL Traffic Offenses (Title 61) (chapters 3, 5, 6, 7, 8 9, 11, 13)
Except (DUI / Per Se – 61-8-401 and 61-8-406)

-Crimes (ONLY these three): Disorderly Conduct 45-8-101
Obstructing 45-7-302
Minor in Possession 45-5-624

-All City Ordinance Violations

7 hours

-DUI / Per Se (Title 61) (DUI 61-8-401 and Per Se 61-8-406)

-Crimes (ALL Title 45) (chapters 2, 5, 6, 7, 8, 9, 10)
Except Disorderly Conduct 45-8-101
Obstructing 45-7-302
Minor in Possession 45-5-624

10 hours

-misdemeanor sex crime

Add hours spent in a BENCH TRIAL (round down) to the month the bench trial occurs
(If it's less than one hour, add nothing, Example: 30 minutes = add no hours,
2.75 hours, add 2 hours, 8.1 hours, add 8 hours)

Add 5 hours to the total for appeals from Justice/Municipal/City court upon appeal

Add 5 hours to the hours assigned if the case is outside of the assigned region.
(Example: DUI (misdemeanor) charged in Kalispell, but the attorney comes from
Missoula = DUI (7) + 5 for travel, assign 12 hours)

Add 7 hours if there are **5 or more charges in one case.**

Add 8 hours a day - per day(s) spent in trial to the month when a **JURY TRIAL** occurs.

Add 20 hours to the **month** for those who practice in courts located outside
of the city where their office is located.

Assign the hours based on the highest crime charged, then no hours for the other charges

EXAMPLES

1- Disorderly, DUI, and open container = 7 hours

(because DUI is worth the most, don't count the others)

2- No insurance, obstructing, and driving while suspended = 3 hours

(that's the highest unit for any one of them)

3- No insurance, obstructing, no DL, speeding, minor in possession,
which goes to jury trial for two days= 26 hours

(start with 3 hours since all are in the 3 hour category, then add 7 hours for five or
more charges, then add 16 hours for two days jury trial)

Felony (Including Juvenile Cases):

<u>2.5 hours</u>	-Fugitive / Out of County warrants
<u>7 hours</u>	-Petition To Revoke
<u>10 hours</u>	-Property Crimes (45-6-101 – 45-6-341) -Offenses Against Public Administration (45-7-101 – 45-7-501) -Offenses Against Public Order (45-8-103 – 45-8-408)
<u>15 hours</u>	-Dangerous Drugs (45-9-101 – 45-9-132) - <u>Felony</u> DUI (61-8-401, 61-8-406)
<u>20 hours</u>	-Felony theft -Offenses Against the Person (45-5-201 – 45-5-401 and 45-5-601 - 637) Except Felony Sex and Homicide charges
<u>50 hours</u>	-Felony Sex Offense (45-5-501 – 45-5-512)
<u>100 hours</u>	-Homicide (45-5-101 – 45-5-106)

Add 5 hours to the hours assigned if there are 3 or 4 charges in the case

Add 5 hours to the hours assigned if the case is outside of the assigned region.

(Example: Kidnapping charged in Kalispell, but the attorney comes from Missoula – person crime + 5 hours for travel, assign 25 hours.)

Add 8 hours a day - per day(s) spent in trial to the month when a TRIAL (bench OR jury trial) occurs.

Add 10 hours to the hours assigned if there are 5 or more charges in the case

Add 20 hours to the month for those who practice in courts located outside of the city where their office is located.

Inchoate Offenses (**Solicitation, Conspiracy, and Attempt**), assign hours according to the underlying crime.

Example: attempted robbery, assign hours for robbery, 45-5-401 = 20 hours

Assign the hours based on the highest crime charged, then look at the number of charges for extra points:

EXAMPLES

- 1- Possession of Dangerous Drugs, Stalking = 20 hours
(since stalking is worth the most, don't assign hours for PODD)
- 2- Criminal Mischief, Arson, Burglary = 15 hours
(even though all are in the 10 hour category, add 5 hours since there are THREE charges)
- 3- Attempted negligent homicide that goes to bench trial for four days= 132 hours
(even though its attempted homicide, look at underlying charge of homicide so 100 hours, then add 8 hours a day for four days, or 32 hours)

Civil:

2.5 hours

-DI (Involuntary Commitment)

Add 5 hours if goes to contested judge hearing (total possible 7.5 hours)

Add 10 hours if goes to contested jury trial (total possible 12.5 hours)

4 hours

-DD (Developmentally Disabled)

5 hours

-DG (Guardianship)

Add 5 hours if the case goes to final contested hearing
(total possible 10 hours)

-DJ (Juveniles - misdemeanor / status offense)

Add 5 hours to the month when a jury trial occurs

Add 7 hours -If there are 5 or more charges in one case

20 hours

-DN (Dependent Neglect)

Add 10 hours if goes to contested termination (total possible 30 hours)

Note: DN case weighting is based upon the cause number of the parent(s), not the number of children, and includes termination proceedings, so trial level preparation is necessary. The value for a DN case is only placed in one of the DN cases that are all related to the same filings against the one client. The value should be placed in the first case the office receives or in the lowest cause number associated with the one client. The case weight value should only be counted once regardless of the number of children.

Add 5 hours to the hours assigned if the case is outside of the assigned region.

Add 20 hours to the **month** for those who practice in courts located outside
of the city where their office is located.

DUI / Treatment Court:

Add 20 hours every month for each treatment court the attorney is assigned to.

Each treatment court is separate and distinct, unless they are consolidated for the purpose of staffing, hearing and case work. For example, some courts have separate official names, but don't require separate attorney time because all court and case work is done at the same time.

Jail Run / Initial Appearances:

Add 70 hours every month for the attorney who is the "designated daily jail attorney" for their office (applies to Regions 1, 2, 3, 4, 5, 8 and 9) This value applies when there is only ONE person doing the jail run and initial appearances for the entire office. This does not apply in offices that use a rotation to cover the jail run and initial appearances.

MONTANA STATE PUBLIC DEFENDER
STAFF ATTORNEY CASE WEIGHTS AS ASSIGNED
FY 2018
July 2017 - June 2018

Region	Attorney ID	Case Weight	Target	Over (Under)
1 - Kalispell	188649	1,708	1,500	208
1 - Kalispell	238393	1,734	750	984
1 - Kalispell	201259	1,256	500	756
1 - Kalispell	198797	1,522	1,500	22
1 - Kalispell	155279	3,243	1,500	1,743
1 - Kalispell	186221	2,298	1,500	798
1 - Kalispell	227155	766	125	641
1 - Kalispell	148299	1,114	1,000	114
1 - Kalispell	98467	1,915	1,500	415
1 - Kalispell	11746	1,880	1,250	630
1 - Kalispell	232437	1,565	500	1,065
1 - Kalispell	116504	2,457	1,500	957
1 - Kalispell	98497	922	750	547
1 - Kalispell	234053	1,457	375	1,082
1 - Kalispell	160139	1,751	1,500	251
1 - Kalispell	237967	2,053	875	1,178
1 - Kalispell	72035	2,622	1,500	1,122
1 - Kalispell	210470	1,298	625	673
1 - Kalispell	199839	1,627	1,500	127
1 - Kalispell	77344	1,410	1,500	(91)
1 - Kalispell	134006	1,635	1,500	135
1 - Kalispell	240545	1,004	500	504
1 - Kalispell	243895	1,062	250	812
1 - Kalispell	159102	2,090	1,500	590
1 - Kalispell	177931	1,435	1,000	435
1 - Kalispell	199606	427	250	177
1 - Kalispell	241565	1,334	375	959
1 - Kalispell - Conflict	170996	1,094	750	719
2 - Missoula	176810	2,605	1,500	1,105
2 - Missoula	2376	1,366	1,500	(134)
2 - Missoula	10212	1,274	1,500	(226)
2 - Missoula	235205	1,545	1,125	420
2 - Missoula	243894	204	250	(46)
2 - Missoula	239926	1,215	625	590
2 - Missoula	211634	1,763	1,500	263
2 - Missoula	115668	1,735	1,500	235
2 - Missoula	199607	2,121	1,500	621
2 - Missoula	122055	1,320	1,500	(180)
2 - Missoula	240546	495	500	(5)
2 - Missoula	9475	2,058	1,500	558
2 - Missoula	210861	1,174	875	299
2 - Missoula	232437	1,152	875	277
2 - Missoula	98497	1,494	750	1,119
2 - Missoula	12123	1,832	1,500	332
2 - Missoula	133017	593	625	(33)

MONTANA STATE PUBLIC DEFENDER
STAFF ATTORNEY CASE WEIGHTS AS ASSIGNED
FY 2018
July 2017 - June 2018

Region	Attorney ID	Case Weight	Target	Over (Under)
2 - Missoula	197145	668	750	(82)
2 - Missoula	134642	97	125	(28)
2 - Missoula	208273	2,426	1,500	926
2 - Missoula	13533	1,463	1,500	(38)
2 - Missoula	16611	961	1,500	(539)
2 - Missoula	82591	1,699	1,250	449
2 - Missoula	19035	1,169	1,500	(331)
2 - Missoula	19639	1,791	1,500	291
2 - Missoula	125946	1,905	1,500	405
2 - Missoula	199606	1,498	1,125	373
2 - Missoula	24001	1,737	1,500	237
2 - Missoula - Conflict	188060	548	500	48
2 - Missoula - Conflict	241614	605	375	230
2 - Missoula - Conflict	11291	1411	1,000	411
2 - Missoula - Conflict	67203	1217	1,500	(283)
2 - Missoula - Conflict	57620	1363	1,500	(137)
2 - Missoula - Conflict	82681	1736	1,500	236
2 - Missoula - Conflict	136579	1472	1,500	(28)
3 - Great Falls	60544	1,444	750	1,069
3 - Great Falls	232838	7,116	1,250	5,866
3 - Great Falls	161878	3,216	1,250	1,966
3 - Great Falls	5562	4,117	1,500	2,617
3 - Great Falls	168625	1,787	1,000	787
3 - Great Falls	93100	2,962	1,500	1,462
3 - Great Falls	200299	4,499	1,500	2,999
3 - Great Falls	200200	4,796	1,500	3,296
3 - Great Falls	12133	220	250	(30)
3 - Great Falls	217332	1,176	750	801
3 - Great Falls	214047	2,156	375	1,781
3 - Great Falls	145122	272	250	22
3 - Great Falls	220663	3,380	1,500	1,880
3 - Great Falls	235209	2,205	875	1,330
3 - Great Falls	202623	3,956	1,375	2,581
3 - Great Falls	28675	2,604	1,500	1,104
3 - Great Falls - Conflict	65157	311	250	186
3 - Great Falls - Conflict	12133	1,993	1,250	743
4 - Helena	101	729	375	354
4 - Helena	220000	3,528	1,500	2,028
4 - Helena	151121	369	250	119
4 - Helena	195114	277	125	152
4 - Helena	221167	2,362	1,500	862
4 - Helena	24128	1,835	1,000	835
4 - Helena	10737	20	125	(105)
4 - Helena	215470	1,732	1,125	607

MONTANA STATE PUBLIC DEFENDER
STAFF ATTORNEY CASE WEIGHTS AS ASSIGNED
FY 2018
July 2017 - June 2018

Region	Attorney ID	Case Weight	Target	Over (Under)
4 - Helena	137867	1,198	750	448
4 - Helena	13756	614	375	239
4 - Helena	235204	857	750	107
4 - Helena	237590	1,749	875	874
4 - Helena	173014	2,130	1,500	630
4 - Helena	187672	2,341	1,500	841
4 - Helena	235202	531	250	281
4 - Helena	110253	2,361	1,125	1,236
4 - Helena	163957	814	375	439
4 - Helena	152162	2,715	1,500	1,215
4 - Helena	219041	1,639	1,000	639
4 - Helena	238446	1,644	750	894
4 - Helena - Conflict	4466	220	250	95
4 - Helena - Conflict	195114	1,353	750	603
5 - Butte	3651	3,207	1,500	1,707
5 - Butte	242702	842	375	467
5 - Butte	231346	3,298	1,500	1,798
5 - Butte	212094	1,194	875	319
5 - Butte	24135	3,430	1,500	1,930
5 - Butte	240757	1,397	500	897
5 - Butte	14804	3,349	1,250	2,099
5 - Butte	63316	226	125	101
5 - Butte	204555	2,548	1,000	1,548
5 - Butte	199827	1,474	1,250	224
5 - Butte	19633	1,505	875	630
5 - Butte	217161	2,599	1,500	1,099
5 - Butte	241563	890	375	515
5 - Butte	194869	440	250	190
5 - Butte - Conflict	14040	982	750	232
6 - Havre	215866	1,720	1,500	220
6 - Havre	214047	936	1,125	(189)
6 - Havre	215094	1,848	1,250	598
6 - Havre	225498	505	250	255
6 - Havre	101111	2,376	1,500	876
7 - Lewistown	214648	1,637	1,500	137
7 - Lewistown	85743	310	375	(66)
8 - Bozeman	39619	1,549	1,500	49
8 - Bozeman	141464	1,483	1,500	(17)
8 - Bozeman	38962	1,565	1,500	65
8 - Bozeman	193704	135	250	(115)
8 - Bozeman	137596	2,024	1,500	524
8 - Bozeman	57485	2,030	1,500	530
8 - Bozeman	14857	2,042	1,500	542

MONTANA STATE PUBLIC DEFENDER
STAFF ATTORNEY CASE WEIGHTS AS ASSIGNED
FY 2018
July 2017 - June 2018

Region	Attorney ID	Case Weight	Target	Over (Under)
8 - Bozeman	212529	1,013	1,000	13
8 - Bozeman	217281	1,983	1,500	483
8 - Bozeman	220670	1,704	1,500	204
8 - Bozeman	172123	2,100	1,500	600
8 - Bozeman	186767	2,077	1,500	577
8 - Bozeman - Conflict	7922	1,401	1,000	401
9 - Billings	100099	2,491	1,500	991
9 - Billings	237013	2,293	1,000	1,293
9 - Billings	240094	899	500	399
9 - Billings	3022	2,407	1,500	907
9 - Billings	170282	5,522	1,500	4,022
9 - Billings	212426	4,315	500	3,815
9 - Billings	224466	2,913	1,500	1,413
9 - Billings	164949	2,735	1,500	1,235
9 - Billings	188060	1,775	1,000	775
9 - Billings	238868	1,083	500	583
9 - Billings	237012	860	500	360
9 - Billings	177409	1,026	375	651
9 - Billings	121706	2,645	1,250	1,395
9 - Billings	224464	3,133	1,500	1,633
9 - Billings	39086	3,519	1,500	2,019
9 - Billings	212529	639	375	264
9 - Billings	232039	3,154	1,375	1,779
9 - Billings	107913	2,654	1,500	1,154
9 - Billings	210764	696	375	321
9 - Billings	204555	1,502	500	1,002
9 - Billings	155309	2,462	1,500	962
9 - Billings	204399	822	750	447
9 - Billings	178365	264	250	14
9 - Billings	49551	3,006	1,500	1,506
9 - Billings	43104	3,247	1,500	1,747
9 - Billings	130917	1,887	1,500	387
9 - Billings	21587	2,439	500	1,939
9 - Billings	81272	3,105	1,500	1,605
9 - Billings	202916	1,362	1,500	(138)
9 - Billings	50288	1,988	1,500	488
9 - Billings	96880	1,217	500	717
9 - Billings	227584	1,978	1,500	478
9 - Billings - Conflict	39077	2,081	1,500	581
9 - Billings - Conflict	51608	1,800	750	1,425
9 - Billings - Conflict	164073	2,225	1,500	725
9 - Billings - Conflict	17987	2,040	1,125	915
9 - Billings - Conflict	96880	1,073	875	198

MONTANA STATE PUBLIC DEFENDER
STAFF ATTORNEY CASE WEIGHTS AS ASSIGNED
FY 2018
July 2017 - June 2018

Region	Attorney ID	Case Weight	Target	Over (Under)
10 - Glendive	238397	957	750	207
10 - Glendive	242611	97	250	(153)
10 - Glendive	12897	718	625	93
11 - Miles City	177409	1,451	1,125	326
11 - Miles City	58167	459	250	209
11 - Miles City	173226	1,388	750	638

Column 1 is the Region number.

Column 2 is the attorney ID number from the Agency's case management system.

Column 3 is the sum of the actual case weightings.

Column 4 is the target of 125 hours/month x the number of months worked.

Column 5 is the amount over or under the target.

The target of 1500 hours was determined by the Montana Public Defender Commission in 2012 as follows:

221 FTE Staff Lawyer Workdays per Year. A 2080 work-hour year comes from 260 work days, *i.e.* , 52 weeks times 5 eight hour days. Although paid on the basis of 2,080 hours, expecting that many productive-hours per year from the most efficient lawyer is not realistic when at least 10 holidays, not less than 15 but not more than 24 vacation days, up to 12 sick leave days, and 15 hours of continuing education reduce the work year. Thus, 260 work days shrink to not more than 221 FTE staff lawyer workdays per year.

147,750 FTE Staff Lawyer-hours. 8.0 productive-hours per day, *i.e.* , representing clients or managing, over 221 days provides 1,768 hours. **1,547 hours comes out of 7.0 productive-hours per day.** Seven productive-hours over 221 work days is more realistic, although probably optimistic after OPD training, office meetings, breaks, and other requirements are taken into consideration. Thus, the productive-hours per annum is rounded down to 1,500 to account for lawyers entitled entitled to more than 15 vacation days and the meetings and other requirements. 1500 hours equates to 6.79 productive-hours on each of the 221 working days. Even that may be hopeful when travel time and waiting in court are considered. 98.5 FTE lawyers producing 1,500 hours of production gives OPD management 147,750 FTE staff lawyer-hours annually.



MONTANA STATE PUBLIC DEFENDER STAFFING REPORT

as of 6/30/2018

(Includes Modified FTE)

47-1-125 (1)(b) (iii) (iv) (v)

Region	Location	Regional Deputy Public Defenders	Attorney	Non- Attorney	FY 2018 Budget	Number of Contract Attorneys by Region*
	Public Defender Division	-	1.00	0.94	1.94	-
	Central Services Division	-	3.00	21.50	24.50	-
	Conflict Defender Division	-	20.00	6.00	26.00	-
	Appellate Defender Division	-	13.00	3.00	16.00	31
1	Kalispell	1.00	20.00	12.00	33.00	38
2	Missoula	1.00	25.00	16.00	42.00	58
3	Great Falls	1.00	13.00	9.00	23.00	56
4	Helena	1.00	12.50	8.00	21.50	44
5	Butte	1.00	9.00	5.00	15.00	66
6	Havre	1.00	4.00	4.00	9.00	41
7	Lewistown	1.00	1.00	2.00	4.00	41
8	Bozeman	1.00	11.00	9.00	21.00	33
9	Billings	1.00	27.50	16.50	45.00	51
10	Glendive	1.00	2.00	2.50	5.50	32
11	Miles City	1.00	2.00	2.00	5.00	32
	Total FTE	11.00	164.00	117.44	292.44	

*195 Total unique contract attorneys - some are available to work in multiple regions.

101 Total non-attorney contractors.



Montana State Public Defender

FY 18
TRAINING PROGRAMS
 July 1, 2017-June 30, 2018

<u>Date of Training</u> 2017	<u>Description of Training</u>	<u>Internal Personnel</u>		<u>External Personnel</u>		<u>Totals</u>
		<u>Attorney</u>	<u>Non-Attorney</u>	<u>Attorney</u>	<u>Non-Attorney</u>	
September 6-7	Fall CSKT-ICWA Legal Summit	10				10
September 14-15	DN Training †	23		20		43
September 22	MTACDL/OPD Criminal Defense CLE †	43		18		61
October 12-13	OPD Statewide Training Conference	140	19	78		237
	- The Promise of Gault; A Guiding Hand, Not a Choke Hold †					
	- Education and Special Education Law for Criminal Defense Attorneys †					
	- What the Exoneration Cases and Social Science Tell Us About False Confessions †					
	- Everyday Ethics in Public Defender Practice †					
	- Lexis Advance I †					
	- Department of Corrections: Sanctions and Placements Under Justice Reinvestment †					
	- My Client is Out-of-State & I'm Going Out-of-My-Mind: Issues in Multi-State Criminal Litigation †					
	- Interviewing Teenage Clients – How to Get More than a Mono-Syllabic Response †					
	- Recognizing and Working with Clients with Language Impairments †					
	- Immigration Issues †					
	- Attorney-Client Communications in a Public Defense Setting †					
	- Confessions and Suppression for Juveniles †					
	- Crimes and Immigration: DUIs, Drugs and Domestic Violence †					
	- Holistic Defense: An Adaptable Model for Public Defender Services †					
	- Simplify and Improve Your Practice with Justware, Office 365 and More †					
	- Working Effectively with Indian Clients †					
	- Everyday Ethics in Public Defender Practice †					
	- Lexis Advance II †					
	- Investigators and Attorneys: Thoughts for Productive Collaboration †					
	- Historical Perspectives on Montana Law					
	- Case Update †					
November 16-17	Mental Health Advocacy	29	2			31
2018						
January 25-26	Management Meeting	15	22			37
March 29	Buzzer Beater Ethics*	40				40
April 11-13	Trial Skills †	30		2		32
May 3-4	OPD/NACDL Advanced Advocacy Skills Training †	42	2	5		49
June 28	Sentence Review*	42				42
Ongoing	Eligibility Specialist Training - Various		8			8
Ongoing	Targeted Attorney & Staff Training					0
Ongoing	Annual Standards Verification					0
Totals		414	53	123	0	590

† Training topics presented to train attorneys for criminal defense or procedure.

* These web-based trainings are now available on demand via the OPD Brief Bank



**MONTANA STATE
PUBLIC DEFENDER**

44 West Park Street, Butte, MT 59701
T: 406.496.6080 F: 406.496.6098
publicdefender.mt.gov

September 30, 2018

Amy Carlson
Legislative Fiscal Analyst
P.O. Box 201711
Helena, MT 59620-1711

Dear Ms. Carlson:

Enclosed with this letter are two reports that are due from the Office of State Public Defender to the Legislative Fiscal Analyst by September 30, 2018 as per Title 47-1-125 (2).

These reports are:

1. The net case report; and
2. The case duration report.

Please contact me if you need any clarification of this information at 406-496-6080.

Sincerely,

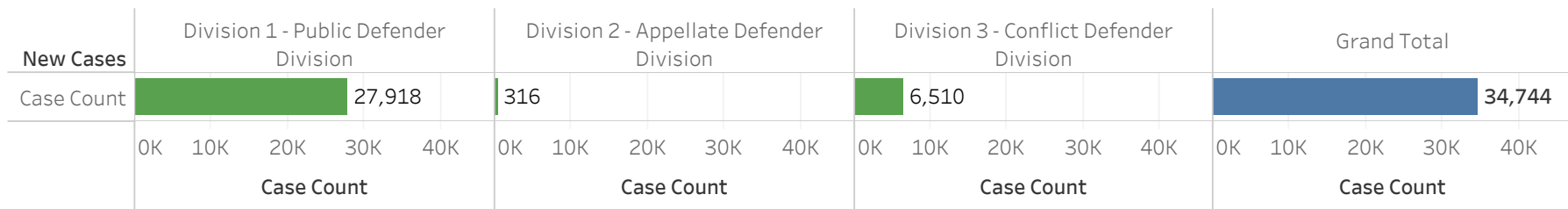
Rhonda Schaffer
Director

cc: Carleen Green, Central Services Division Administrator
Kris Wilkinson, Legislative Fiscal Division
Christine Hultin, Office of Budget and Program Planning

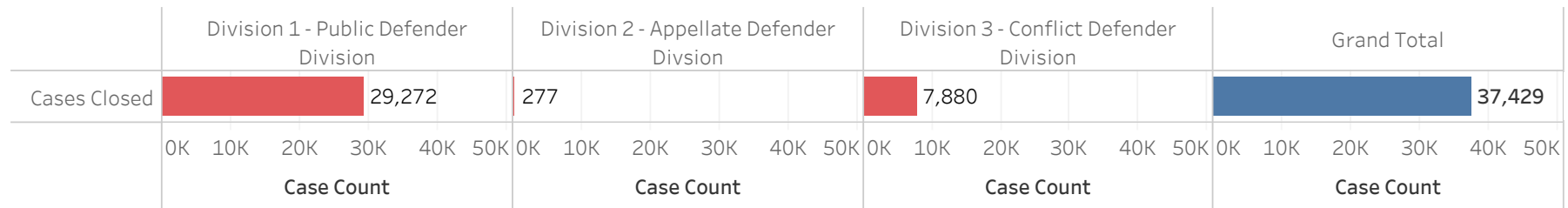


MONTANA STATE PUBLIC DEFENDER
NEW CASES OPENED, ACTIVE AND INACTIVE
CASES REMAINING OPEN, AND CASES CLOSED
FY 2018
TITLE 47-1-125 (2)

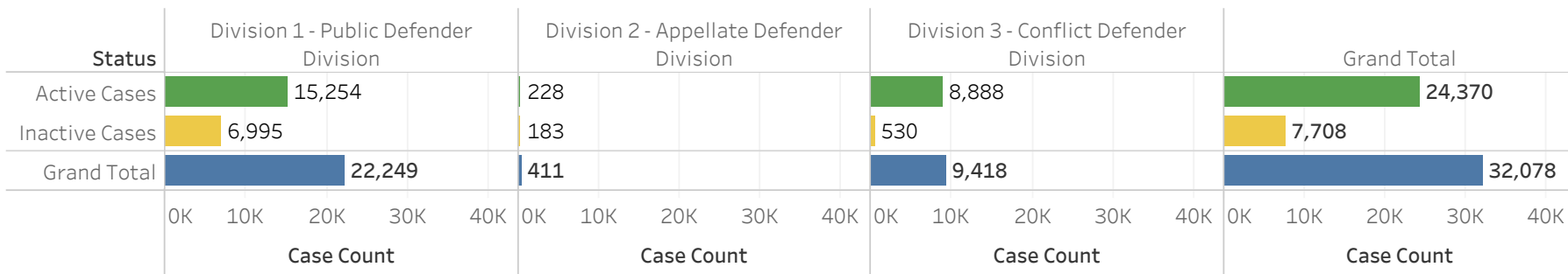
New Cases - Opened Between 7/1/2017 and 6/30/2018



Cases Closed - Between 7/1/2017 and 6/30/2018 (1)



Active and Inactive Open Cases - As of 6/30/2018 (1)

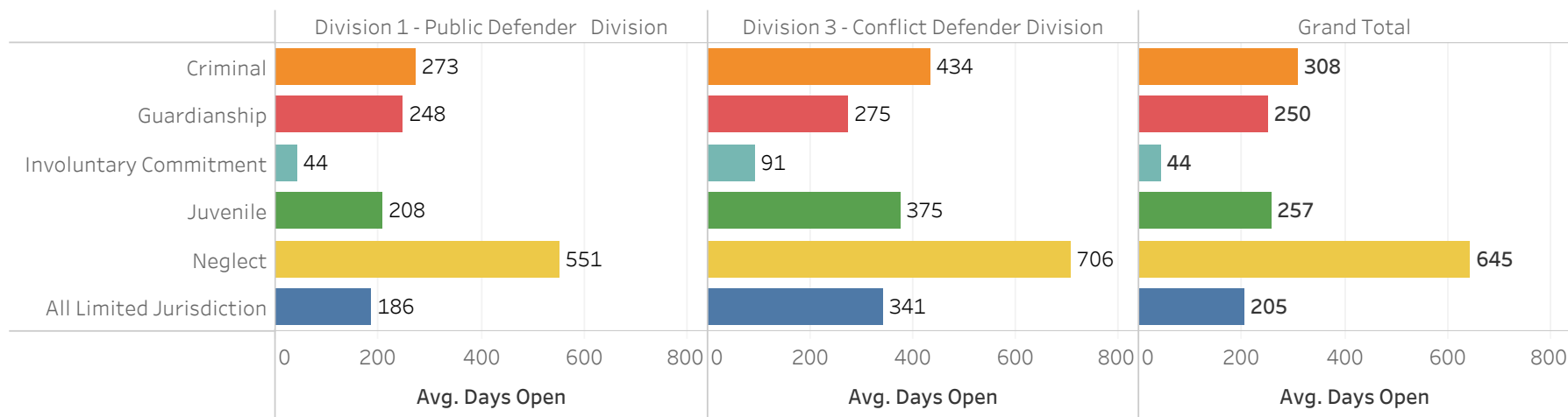


(1) - Includes cases from both current and prior fiscal years.

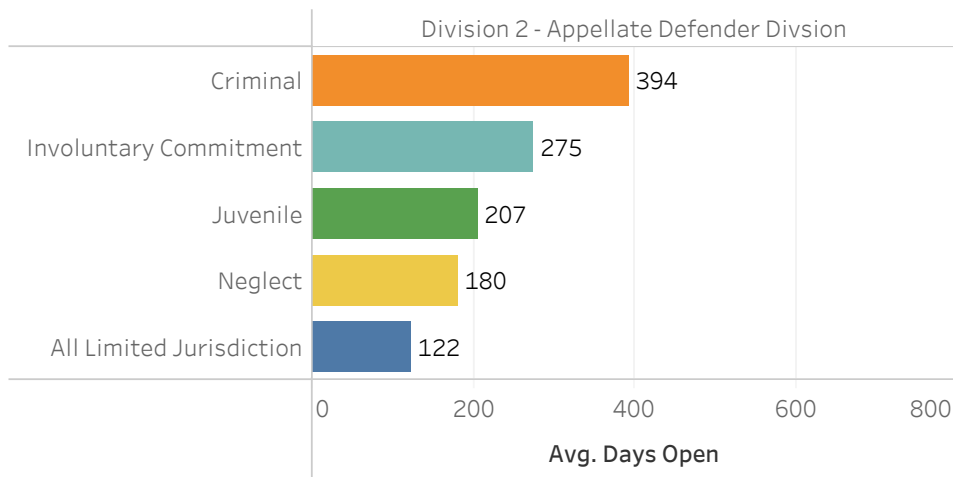


MONTANA STATE PUBLIC DEFENDER
AVERAGE NUMBER OF DAYS OPEN FOR
CASES CLOSED DURING FY 2018 BY CASE TYPE
TITLE 47-1-125 (2)

Case Duration - Divisions 1 and 3 (Trial and Conflict Divisions)



Case Duration - Division 2 (Appellate Division)





MONTANA STATE PUBLIC DEFENDER
NUMBER OF CLIENTS
REPRESENTED DURING FY 2018
TITLE 47-1-125 (vii)

Region	Division	All Limited Jurisdiction	Criminal	Guardianship	Involuntary Commitment	Juvenile	Neglect	Grand Total
Appellate Defender Division	Division 1		133					133
	Division 2	22	159	3	12	1	65	262
Region 1 - Kalispell	Division 1	2,111	960	39	149	42	87	3,388
	Division 3	167	169	1		12	210	559
Region 2 - Missoula	Division 1	2,392	803	31	234	126	116	3,702
	Division 3	232	134			27	368	761
Region 3 - Great Falls	Division 1	1,229	736	3	36	89	228	2,321
	Division 3	86	162		1	21	375	645
Region 4 - Helena	Division 1	1,103	556	6	52	39	55	1,811
	Division 3	87	105		1	11	155	359
Region 5 - Butte	Division 1	915	486	9	110	29	89	1,638
	Division 3	138	93	2	2	6	169	410
Region 6 - Havre	Division 1	475	214	12	18	18	42	779
	Division 3	92	61		2	7	148	310
Region 7 - Lewistown	Division 1	148	121	3	75	6	24	377
	Division 3	18	25		1	3	24	71
Region 8 - Bozeman	Division 1	1,428	434	5	66	19	37	1,989
	Division 3	170	125		1	10	64	370
Region 9 - Billings	Division 1	2,378	1,329	38	167	98	278	4,288
	Division 3	341	276			37	419	1,073
Region 10 - Glendive	Division 1	261	276	2	10	17	32	598
	Division 3	2	12			3	69	86
Region 11 - Miles City	Division 1	198	180	10	3	7	44	442
	Division 3	16	39	4		3	81	143
Grand Total		14,009	7,588	168	940	631	3,179	26,515

Note: This report will count a client more than once if they had cases in multiple jurisdictions, divisions, and/or case types.



MONTANA STATE PUBLIC DEFENDER
NUMBER OF CLIENTS REPRESENTED
DURING FY 2018 BY COURT
TITLE 47-1-125 (vii)

Region	County	City	CourtType	Division	All Limited Jurisdiction	Criminal	Guardianship	Involuntary Commitment	Juvenile	Neglect	Grand Total	
Region 1 - Kalispell	Flathead	Columbia Falls	City	Division 1	128						128	
				Division 3	7					7		
		Kalispell	City	Division 1	482						482	
				Division 3	23					23		
			District	Division 1		471	21	117	29	58	696	
				Division 3		59			6	151	216	
		Justice	Division 1	670						670		
			Division 3	30						30		
		Whitefish	City	Division 1	97						97	
				Division 3	5						5	
	Lake	Polson	City	Division 1	66						66	
				Division 3	12						12	
			District	Division 1		321	11	18	9	14	373	
				Division 3		79	1		5	35	120	
			Justice	Division 1	330						330	
				Division 3	62						62	
		Ronan	City	Division 1	26						26	
				Division 3	2						2	
		Saint Ignatius	City	Division 1	4						4	
		Lincoln	Eureka	City	Division 1	18						18
	Division 3				1						1	
	Libby		City	Division 1	61						61	
				Division 3	6						6	
			District	Division 1		120	1	10	3	13	147	
				Division 3		29				17	46	
	Justice		Division 1	92						92		
			Division 3	16						16		
	Troy		City	Division 1	17						17	
				Division 3	1						1	
	Sanders	Hot Springs	City	Division 1	3						3	
		Plains	City	Division 1	15						15	
		Thompson Falls	City	Division 1	31						31	
				Division 3	1						1	
			District	Division 1		48	6	4	1	2	61	
				Division 3		2			1	7	10	
		Justice	Division 1	71						71		
			Division 3	1						1		
	Grand Total					2,278	1,129	40	149	54	297	3,947

Note: This report will count a client more than once if they had cases in multiple jurisdictions, divisions, and/or case types.



MONTANA STATE PUBLIC DEFENDER
NUMBER OF CLIENTS REPRESENTED
DURING FY 2018 BY COURT
TITLE 47-1-125 (vii)

Region	County	City	CourtType	Division	All Limited Jurisdiction	Criminal	Guardianship	Involuntary Commitment	Juvenile	Neglect	Grand Total	
Region 2 - Missoula	Mineral	Alberton	City	Division 1	2						2	
		Superior	City	Division 1	3						3	
			District	Division 1	53	2	3	5	63			
				Division 3	11			12	23			
			Justice	Division 1	69				69			
		Division 3		6				6				
	Missoula	Missoula	City	Division 1	1,249						1,249	
				Division 3	115					115		
			District	Division 1	552	23	211	96	89	971		
				Division 3	84			14	268	366		
			Justice	Division 1	601					601		
				Division 3	63					63		
		Ravalli	Darby	City	Division 1	20						20
					Division 3	3					3	
	Hamilton		City	Division 1	110						110	
				Division 3	9					9		
			District	Division 1	198	8	21	27	22	276		
				Division 3	39			13	88	140		
			Justice	Division 1	323					323		
				Division 3	36					36		
	Stevensville	City	Division 1	15						15		
	Grand Total					2,624	937	31	234	153	484	4,463

Note: This report will count a client more than once if they had cases in multiple jurisdictions, divisions, and/or case types.



MONTANA STATE PUBLIC DEFENDER
NUMBER OF CLIENTS REPRESENTED
DURING FY 2018 BY COURT
TITLE 47-1-125 (vii)

Region	County	City	CourtType	Division	All Limited Jurisdiction	Criminal	Guardianship	Involuntary Commitment	Juvenile	Neglect	Grand Total
Region 3 - Great Falls	Cascade	Great Falls	City	Division 1	716						716
				Division 3	56						56
			District	Division 1		616	2	26	77	208	929
				Division 3		147		1	21	340	509
			Justice	Division 1	320						320
				Division 3	15						15
	Glacier	Cut Bank	City	Division 1	76						76
				Division 3	10						10
			District	Division 1		50		7	3	7	67
				Division 3		10				12	22
			Justice	Division 1	28						28
				Division 3	2						2
	Pondera	Conrad	City	Division 1	15						15
				Division 3							
			District	Division 1		11		1	3	5	20
				Division 3		2				8	10
			Justice	Division 1	22						22
				Division 3	1						1
	Teton	Choteau	District	Division 1		21		1	3	3	28
				Division 3		2				5	7
			Justice	Division 1	17						17
	Toole	Shelby	City	Division 1	15						15
				Division 3							
			District	Division 1		37	1	1	3	5	47
				Division 3		1				10	11
			Justice	Division 1	20	1					21
Division 3	2							2			
Grand Total					1,315	898	3	37	110	603	2,966

Note: This report will count a client more than once if they had cases in multiple jurisdictions, divisions, and/or case types.



MONTANA STATE PUBLIC DEFENDER
NUMBER OF CLIENTS REPRESENTED
DURING FY 2018 BY COURT
TITLE 47-1-125 (vii)

Region	County	City	CourtType	Division	All Limited Jurisdiction	Criminal	Guardianship	Involuntary Commitment	Juvenile	Neglect	Grand Total
Region 4 - Helena	Broadwater	Townsend	City	Division 1	31						31
			District	Division 1		32	1	5	2	5	45
				Division 3		7				16	23
			Justice	Division 1	32						32
				Division 3	2						2
	Jefferson	Boulder	City	Division 1	9						9
			District	Division 1		50	1	5	1		57
				Division 3		4			1		5
			Justice	Division 1	36						36
			Division 3	5						5	
		Whitehall	City	Division 1	12						12
		Lewis And Clark	East Helena	City	Division 1	17					
				Division 3	2						2
	Helena		City	Division 1	597						597
				Division 3	46						46
			District	Division 1		474	4	42	36	50	606
				Division 3		94		1	10	139	244
			Justice	Division 1	369						369
				Division 3	32						32
	Grand Total					1,190	661	6	53	50	210

Note: This report will count a client more than once if they had cases in multiple jurisdictions, divisions, and/or case types.



MONTANA STATE PUBLIC DEFENDER
NUMBER OF CLIENTS REPRESENTED
DURING FY 2018 BY COURT
TITLE 47-1-125 (vii)

Region	County	City	CourtType	Division	All Limited Jurisdiction	Criminal	Guardianship	Involuntary Commitment	Juvenile	Neglect	Grand Total		
Region 5 - Butte	Beaverhead	Dillon	City	Division 1	39						39		
				Division 3	3						3		
			District	Division 1		19	1	10	5	11	46		
				Division 3		3		1	3	36	43		
			Justice	Division 1	50						50		
				Division 3	1						1		
	Deer Lodge	Anaconda	District	Division 1		90	2	19	6	2	119		
				Division 3		34	1		3	9	47		
			Justice	Division 1	138						138		
				Division 3	38						38		
	Granite	Philipsburg	District	Division 1		12		2	1		15		
				Division 3		2					2		
			Justice	Division 1	30						30		
	Madison	Ennis	City	Division 1	5							5	
			Virginia City	Division 1		10	1			6	17		
				Division 3		1				10	11		
			Justice	Division 1	75						75		
				Division 3	3						3		
			Powell	Deer Lodge	City	Division 1	27						
	Division 3	6									6		
	District	Division 1				92	5	6	1	6	110		
		Division 3				27	1	1		18	47		
	Justice	Division 1			31						31		
		Division 3			7						7		
	Silver Bow	Butte			City	Division 1	383						383
						Division 3	33						33
			District	Division 1		263		73	16	64	416		
				Division 3		26				96	122		
			Justice	Division 1	137						137		
				Division 3	47						47		
Grand Total					1,053	579	11	112	35	258	2,048		

Note: This report will count a client more than once if they had cases in multiple jurisdictions, divisions, and/or case types.



MONTANA STATE PUBLIC DEFENDER
NUMBER OF CLIENTS REPRESENTED
DURING FY 2018 BY COURT
TITLE 47-1-125 (vii)

Region	County	City	CourtType	Division	All Limited Jurisdiction	Criminal	Guardianship	Involuntary Commitment	Juvenile	Neglect	Grand Total	
Region 6 - Havre	Blaine	Chinook	City	Division 1	5						5	
			District	Division 1		23	1	1	1	8	34	
				Division 3		7			1	21	29	
			Justice	Division 1	21						21	
				Division 3	4						4	
		Harlem	City	Division 1	5						5	
	Chouteau	Fort Benton	City	Division 1	6							6
			District	Division 1		13	1	1	1	1	17	
				Division 3						14	14	
			Justice	Division 1	11						11	
	Hill	Havre	City	Division 1	164							164
				Division 3	47							47
			District	Division 1		119	2	8	12	22	163	
				Division 3		39		2	5	77	123	
			Justice	Division 1	180						180	

Note: This report will count a client more than once if they had cases in multiple jurisdictions, divisions, and/or case types.



MONTANA STATE PUBLIC DEFENDER
NUMBER OF CLIENTS REPRESENTED
DURING FY 2018 BY COURT
TITLE 47-1-125 (vii)

Region	County	City	CourtType	Division	All Limited Jurisdiction	Criminal	Guardianship	Involuntary Commitment	Juvenile	Neglect	Grand Total
Region 7 - Lewistown	Fergus	Lewistown	City	Division 1	49						49
				Division 3	6						6
			District	Division 1		54	3	74	5	17	153
				Division 3		9		1	2	18	30
			Justice	Division 1	27						27
				Division 3	4						4
	Golden Valley	Ryegate	District	Division 1		4					4
			Justice	Division 1	7						7
				Division 3	1						1
	Judith Basin	Stanford	District	Division 1		14		1			15
				Division 3		2					2
			Justice	Division 1	14						14
				Division 3	5						5
	Meagher	White Sulphur Springs	District	Division 1		5					5
			Justice	Division 1	8						8
	Musselshell	Roundup	City	Division 1	11						11
				Division 3	2						2
			District	Division 1		34			1	4	39
				Division 3		10			1	4	15
			Justice	Division 1	26						26
				Division 3							
	Petroleum	Winnett	District	Division 1		2				1	3
			Justice	Division 1	2						2
	Wheatland	Harlowton	City	Division 1	2						2
				District	Division 1		8				2
			Division 3			4				2	6
			Justice	Division 1	2						2
				Division 3							
Grand Total					166	146	3	76	9	48	448

Note: This report will count a client more than once if they had cases in multiple jurisdictions, divisions, and/or case types.



MONTANA STATE PUBLIC DEFENDER
NUMBER OF CLIENTS REPRESENTED
DURING FY 2018 BY COURT
TITLE 47-1-125 (vii)

Region	County	City	CourtType	Division	All Limited Jurisdiction	Criminal	Guardianship	Involuntary Commitment	Juvenile	Neglect	Grand Total
Region 8 - Bozeman	Gallatin	Belgrade	City	Division 1	138						138
				Division 3	18						18
		Bozeman	City	Division 1	537						537
				Division 3	53						53
			District	Division 1		333	5	56	18	33	445
				Division 3		74		1	7	57	139
			Justice	Division 1	512						512
				Division 3	49						49
		Manhattan	City	Division 1	12					12	
				Division 3	3					3	
		Three Forks	City	Division 1	2					2	
		West Yellowstone	City	Division 1	30					30	
	Park	Livingston	City	Division 1	68					68	
				Division 3	23					23	
		District	Division 1		92		10	1	2	105	
				Division 3		44			1	5	50
		Justice	Division 1		97					97	
				Division 3	19					19	
		Sweet Grass	Big Timber	City	Division 1	12					12
					Division 3	3					3
	District		Division 1		9				2	11	
				Division 3		7			2	2	11
	Justice		Division 1		20					20	
				Division 3	2					2	
Grand Total					1,598	559	5	67	29	101	2,359

Note: This report will count a client more than once if they had cases in multiple jurisdictions, divisions, and/or case types.



MONTANA STATE PUBLIC DEFENDER
NUMBER OF CLIENTS REPRESENTED
DURING FY 2018 BY COURT
TITLE 47-1-125 (vii)

Region	County	City	CourtType	Division	All Limited Jurisdiction	Criminal	Guardianship	Involuntary Commitment	Juvenile	Neglect	Grand Total		
Region 9 - Billings	Big Horn	Hardin	City	Division 1	98						98		
				Division 3	16					16			
			District	Division 1		97		2	6	16	121		
				Division 3		16			3	18	37		
			Justice	Division 1	48						48		
				Division 3	7						7		
		Carbon	Bridger	City	Division 1	1						1	
				Fromberg	City	Division 1	1						1
					Division 3	1						1	
			Joliet	City	Division 1	2						2	
				Red Lodge	City	Division 1	26						26
					Division 3	1						1	
			District		Division 1		47	1	2		8	58	
					Division 3		4				8	12	
			Justice	Division 1	31							31	
				Division 3	1							1	
			Stillwater	Columbus	City	Division 1	17						17
						Division 3	1						1
	District	Division 1				34	1	2	3	1	41		
		Division 3				1					1		
	Justice	Division 1			34						34		
		Division 3			2						2		
	Yellowstone	Billings	City	Division 1	1,350						1,350		
				Division 3	216						216		
			District	Division 1		1,151	36	161	89	253	1,690		
				Division 3		255			34	393	682		
			Justice	Division 1	699						699		
				Division 3	88						88		
		Laurel	City	Division 1	71						71		
			Division 3	8						8			
	Grand Total					2,719	1,605	38	167	135	697	5,361	

Note: This report will count a client more than once if they had cases in multiple jurisdictions, divisions, and/or case types.



MONTANA STATE PUBLIC DEFENDER
NUMBER OF CLIENTS REPRESENTED
DURING FY 2018 BY COURT
TITLE 47-1-125 (vii)

Region	County	City	CourtType	Division	All Limited Jurisdiction	Criminal	Guardianship	Involuntary Commitment	Juvenile	Neglect	Grand Total
Region 10 - Glendive	Daniels	Scobey	City	Division 1	1						1
			District	Division 1		1				3	4
				Division 3						8	8
	Dawson	Glendive	City	Division 1	43						43
			District	Division 1		115	1	6	7	11	140
				Division 3		7			1	26	34
			Justice	Division 1	38						38
	McCone	Circle	District	Division 1		7			2	2	11
				Division 3						3	3
			Justice	Division 1	4						4
	Prairie	Terry	District	Division 1		4				1	5
				Division 3						2	2
			Justice	Division 1	6						6
	Richland	Fairview	City	Division 1	5						5
			City	Division 1	75						75
		Sidney		Division 3	1						1
			District	Division 1		110		4	3	8	125
				Division 3		4			1	15	20
			Justice	Division 1	41						41
	Roosevelt	Wolf Point		Division 3	1						1
			City	Division 1	5						5
			City	Division 1	1						1
			District	Division 1		27			2		29
				Division 3					1		1
			Justice	Division 1	25						25
	Sheridan	Plentywood	City	Division 1	10						10
			District	Division 1		11	1		1	7	20
				Division 3		1				15	16
			Justice	Division 1	7						7
	Wibaux	Wibaux	District	Division 1		1			2		3
Grand Total					263	288	2	10	20	101	684

Note: This report will count a client more than once if they had cases in multiple jurisdictions, divisions, and/or case types.



MONTANA STATE PUBLIC DEFENDER
NUMBER OF CLIENTS REPRESENTED
DURING FY 2018 BY COURT
TITLE 47-1-125 (vii)

Region	County	City	CourtType	Division	All Limited Jurisdiction	Criminal	Guardianship	Involuntary Commitment	Juvenile	Neglect	Grand Total					
Region 11 - Miles City	Carter	Ekalaka	District	Division 1	1						1					
			Justice	Division 1	2						2					
	Custer	Miles City	City	Division 1	80						80					
				Division 3	5						5					
			District	Division 1	111						7	3	1	36	158	
				Division 3	22						4		1	67	94	
			Justice	Division 1	14										14	
	Fallon	Baker	City	Division 1	8										8	
				Division 3	1										1	
			District	Division 1	16						1		3		5	25
				Division 3	5								1		4	10
			Justice	Division 1	17										17	
				Division 3	1										1	
	Garfield	Jordan	District	Division 1	2										2	
	Powder River	Broadus	District	Division 1	10										1	11
				Division 3	3										2	5
			Justice	Division 1	5										5	
	Rosebud	Colstrip	City	Division 1	21										21	
				Division 3	3										3	
			Forsyth	City	Division 1	4										4
					Division 3	2										2
		District		Division 1	40						2		3		2	47
				Division 3	9								1		8	18
		Justice	Division 1	42										42		
			Division 3	4										4		
Treasure	Hysham	Justice	Division 1	5										5		
Grand Total					214	219	14	3	10	125	585					

Note: This report will count a client more than once if they had cases in multiple jurisdictions, divisions, and/or case types.